

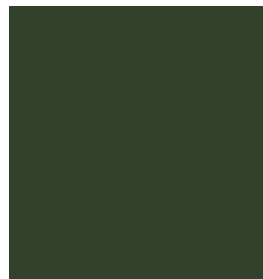
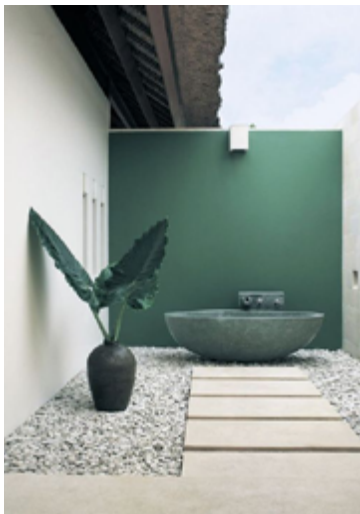
**OUT  
in the  
jungle**



**OUT in  
the jungle.  
Discover our  
8 new trend  
colours to C.**

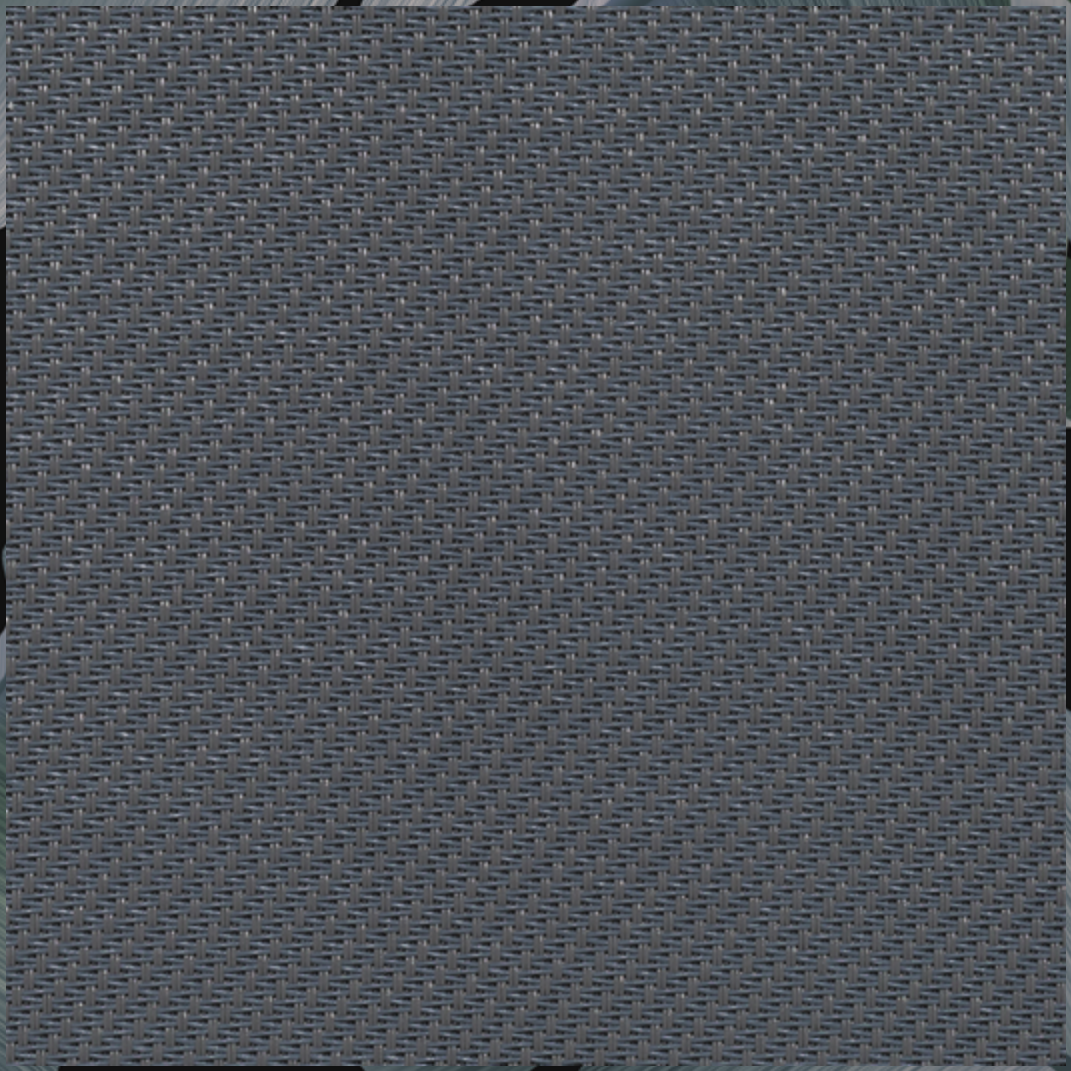






OUT in the jungle are 8 new trend colours under the label 'Architects' selection': the trendiest colours and designs that perfectly match the desires of architects, interior designers and consumers.

<b>shade</b>	<b>6</b>
<b>coconut</b>	<b>8</b>
<b>moss</b>	<b>10</b>
<b>palm</b>	<b>12</b>
<b>maroon</b>	<b>14</b>
<b>mango</b>	<b>16</b>
<b>lagoon</b>	<b>18</b>
<b>safari</b>	<b>20</b>





# shade

---

Finding shelter in the jungle isn't hard. You're always surrounded by tropical leaves. Our colour, **shade**, reminds you of the cooling freshness you feel when you escape the sun's midday heat. Just sit back and chill!

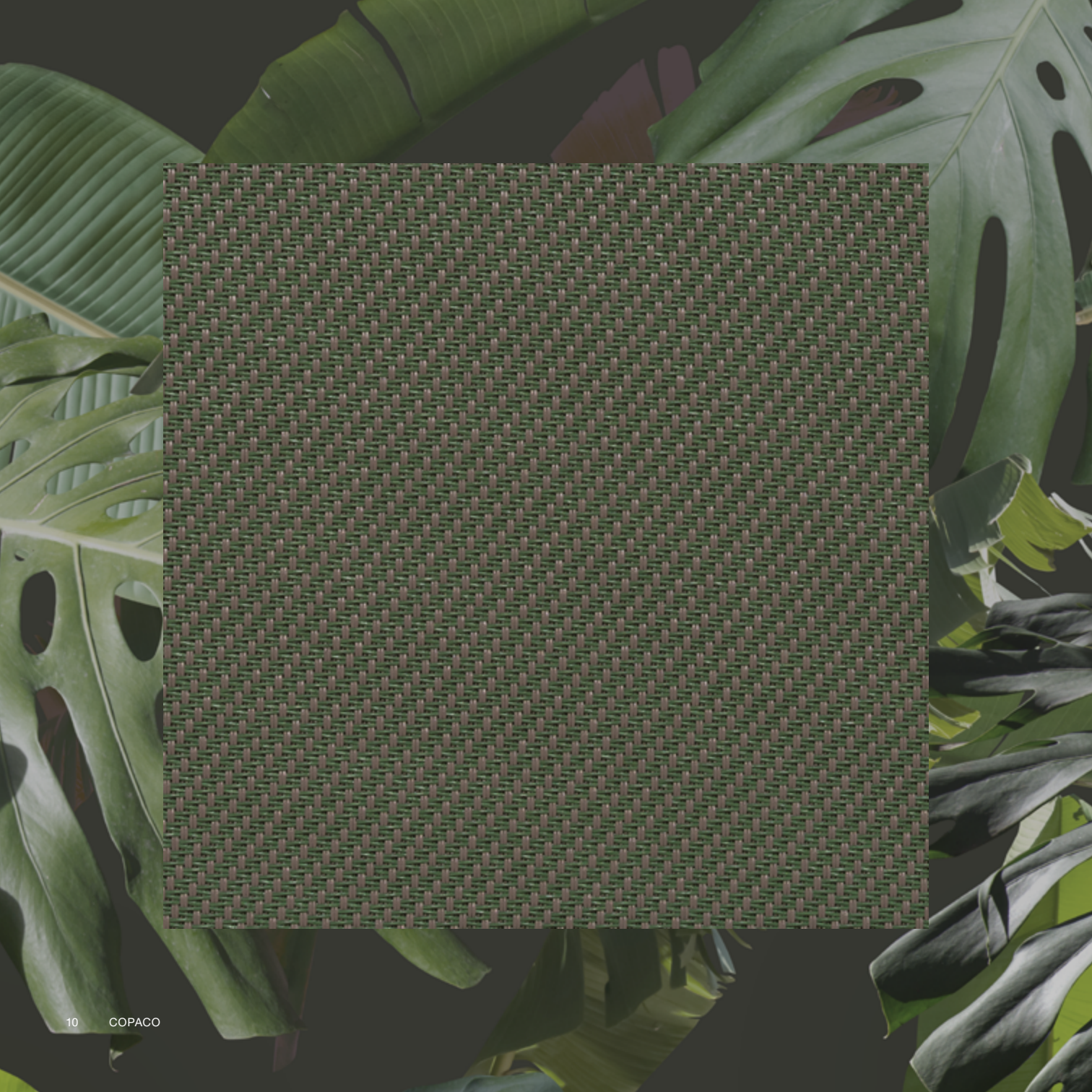




# coconut

---

Are you nuts about coconuts? We are! We just love piña coladas and adore this new shade of brown. If you're looking for an earthy, warm colour that gives your home a natural touch, go **coconut!**





# moss

---

Greens are here to stay, that's for sure! But what tone to pick? **Moss** is not just the soft, small, evergreen plants that are also referred to as the 'Earth's lung' due to their ability to absorb harmful toxins and transform them into luxurious, damp moss; it's also one of our newest colours. A safe choice, no?

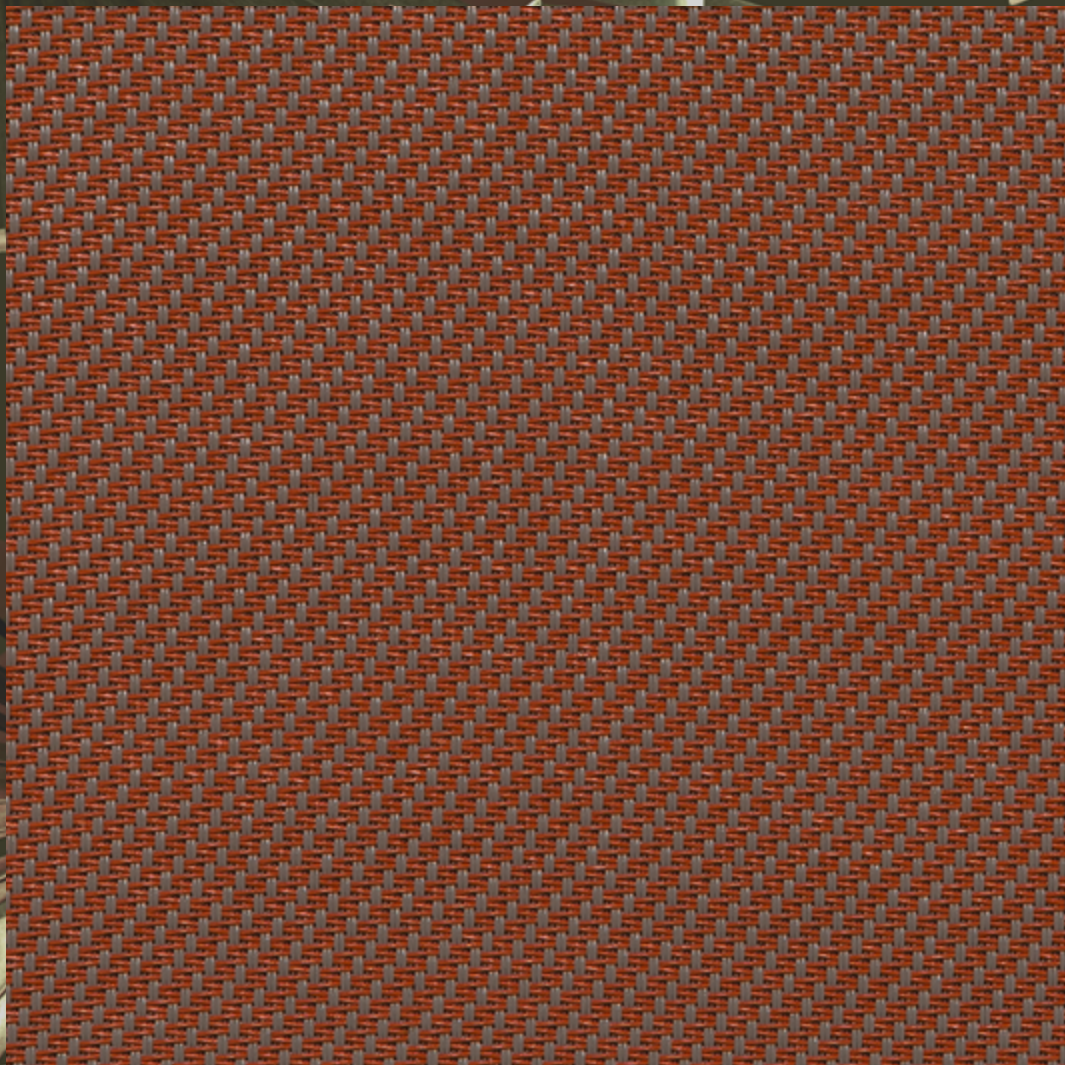




# palm

---

Palm trees are one of the things you immediately think of when you imagine a tropical paradise. Did you know there are over 2,500 species of these evergreen plants? **Palm** might just be the right shade of green to turn your house into your own little paradise.





# maroon

---

You're right... Maroons don't grow in the jungle. But... maroon leaf monkeys do! These charismatic primates are known for the special and beautiful shade of their fur. They were our inspiration for the vivid colour **maroon**.





# mango

---

What a mouth-wateringly delicious yellow: **mango**. Who doesn't love this sweet, juicy fruit? Mango brightens your home, giving it a lasting feeling of sunny warmth. An exciting choice, if you ask us!





# lagoon

---

No jungle is complete without a **lagoon**. The paradisiacal, picture-perfect lagoon refers to the deep and tempting azure of mystic waters. Always irresistible, just inviting you to jump in.





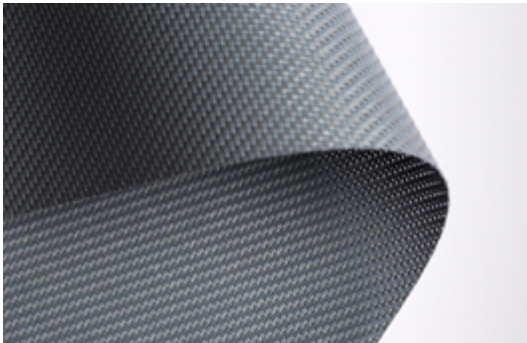
# safari

---

Ready for some adventure? Go on **safari** and explore the jungle. Let yourself be spellbound by the magnificent scents, colours and sounds. Seize the day. Surprises await... Go find them!

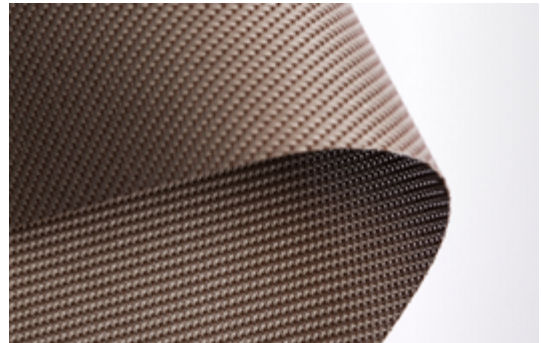
# overview

---



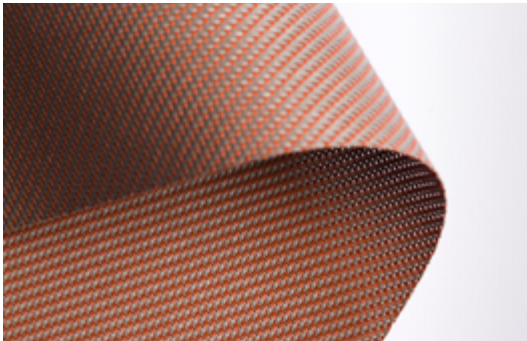
**shade**

**Serge 600** 001042 shade



**coconut**

**Serge 600** 001045 coconut



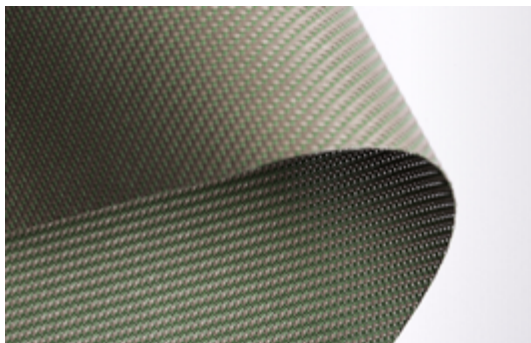
**maroon**

**Serge 600** 033041 maroon



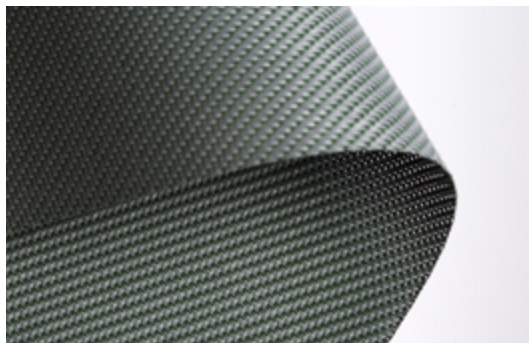
**mango**

**Serge 600** 032040 mango



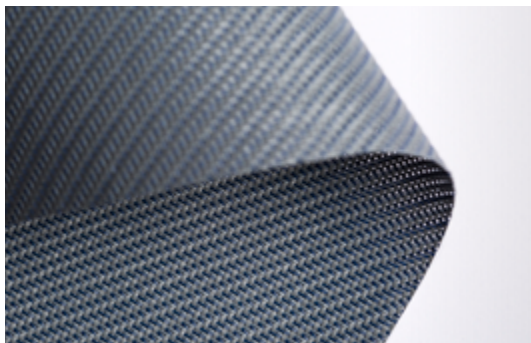
**moss**

**Serge 600** 033043 moss



**palm**

**Serge 600** 001044 palm



**lagoon**

**Serge 600** 001094 lagoon



**safari**

**Serge 600** 008001 safari



Rijksweg 125, 8531 Bavikhove - Belgium

· T +32 (0)56 35 35 33 · F +32 (0)56 35 80 48 · [www.copaco.be](http://www.copaco.be)

A division of the brand

**MERMET**