

cool

# Verso

---

COLLECTION 2018-2021  
THERMAL TRANQUILITY  
GLASSFIBRE  
OF = 1-3%



**Perfect thermal  
comfort even  
on the hottest  
summer days.  
Meet Cool.**





# Verso 1%

OF = 1%



# Verso 3%

OF = 3%

Verso 1% 002008 white | linen



Verso 3% 002010 white | charcoal



# Verso 1%

OF = 1%

# Verso 3%

OF = 3%

## Technical specifications

TECHNICAL SPECIFICATION		UNITY		STANDARD	RESULT
composition				Glassfibre 36% - PVC 64%	
openness factor		%		NBN EN 410	1%
weight		g/m <sup>2</sup>		NF EN 12127	480,6
thickness		mm		ISO 2286-3	0,694
density		yarn/cm	warp	ISO 7211/2	24
			weft		25
colour fastness to artificial light				ISO 105 B02	>7
tear strength	original	daN	warp	ISO 4674-1 method 2	2,2
			weft		2,4
elongation up to break	original	%	warp	ISO 1421	2,85
			weft		2,4
breaking strength	original	daN/5 cm	warp	ISO 1421	185
			weft		130
elongation up to break	after colour fastness to artificial light	%	warp	ISO 1421	3,1
			weft		2,9
breaking strength	after colour fastness to artificial light	daN/5 cm	warp	ISO 1421	175
			weft		140
tear strength	after climatic chamber -30°C	daN	warp	ISO 4674-1 method 2	2,05
			weft		2,1
elongation up to break	after climatic chamber -30°C	%	warp	ISO 1421	2,1
			weft		2,6
breaking strength	after climatic chamber -30°C	daN/5 cm	warp	ISO 1421	115
			weft		120
tear strength	after climatic chamber +70°C	daN	warp	ISO 4674-1 method 2	2,3
			weft		2,7
elongation up to break	after climatic chamber +70°C	%	warp	ISO 1421	2
			weft		2,7
breaking strength	after climatic chamber +70°C	daN/5 cm	warp	ISO 1421	100
			weft		100
fire classification	Europe			UNE-EN 13501-1:2007	C-s3,d0
	France			NF P92-503	M1
	Italy			UNI 9177	Class 1
	Germany			DIN 4102	B1
	UK			BS 5867	C
	USA			NFPA 701	FR
	Spain			UNE EN 13773-2003	Clase 1
roll length		<b>30 m</b>			
cleaning		with soapy water			
confection		by heat, high frequency or ultrasonic welding			

These properties are given as indicative and don't have any contractual value

## Technical specifications

TECHNICAL SPECIFICATION		UNITY		STANDARD	RESULT
composition				Glassfibre 36% - PVC 64%	
openness factor		%		NBN EN 410	3%
weight		g/m <sup>2</sup>		NF EN 12127	452,8
thickness		mm		ISO 2286-3	0,693
density		yarn/cm	warp	ISO 7211/2	24
			weft		23
colour fastness to artificial light				ISO 105 B02	>7
tear strength	original	daN	warp	ISO 4674-1 method 2	5,9
			weft		4,6
elongation up to break	original	%	warp	ISO 1421	2,7
			weft		3,6
breaking strength	original	daN/5 cm	warp	ISO 1421	155
			weft		180
elongation up to break	after colour fastness to artificial light	%	warp	ISO 1421	2,9
			weft		3,3
breaking strength	after colour fastness to artificial light	daN/5 cm	warp	ISO 1421	160
			weft		170
tear strength	after climatic chamber -30°C	daN	warp	ISO 4674-1 method 2	6,3
			weft		5,5
elongation up to break	after climatic chamber -30°C	%	warp	ISO 1421	2,75
			weft		2,4
breaking strength	after climatic chamber -30°C	daN/5 cm	warp	ISO 1421	150
			weft		110
tear strength	after climatic chamber +70°C	daN	warp	ISO 4674-1 method 2	6
			weft		4,7
elongation up to break	after climatic chamber +70°C	%	warp	ISO 1421	2,3
			weft		2,35
breaking strength	after climatic chamber +70°C	daN/5 cm	warp	ISO 1421	100
			weft		100
fire classification	Europe			UNE-EN 13501-1:2007	C-s3,d0
	France			NF P92-503	M1
	Italy			UNI 9177	Class 1
	Germany			DIN 4102	B1
	UK			BS 5867	C
	USA			NFPA 701	FR
	Spain			UNE EN 13773-2003	Clase 1
roll length		<b>30 m</b>			
cleaning		with soapy water			
confection		by heat, high frequency or ultrasonic welding			

These properties are given as indicative and don't have any contractual value





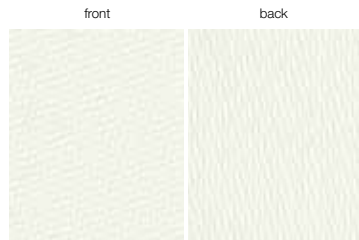
# Verso 1%



GLASSFIBRE

OF = 1%

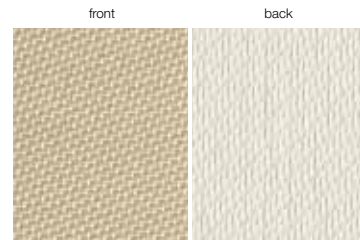
## Colours & references



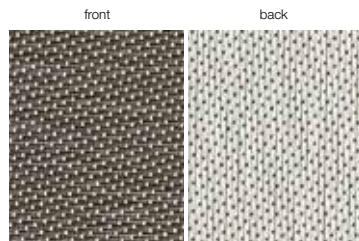
Verso 1% 002002 white | white



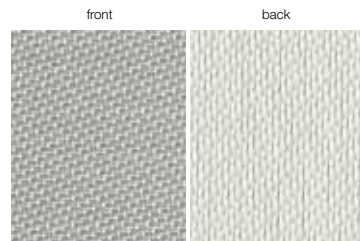
Verso 1% 002008 white | linen



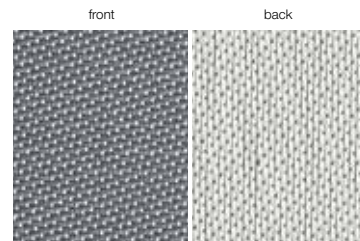
Verso 1% 002003 white | sand



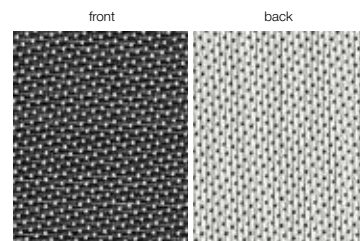
Verso 1% 002011 white | bronze



Verso 1% 002007 white | pearl grey



Verso 1% 002001 white | grey



Verso 1% 002010 white | charcoal

Verso 1%	160 cm	250 cm	320 cm
002002 white   white	•	•	•
002008 white   linen	•	•	•
002003 white   sand	•	•	•
002011 white   bronze	•	•	•
002007 white   pearl grey	•	•	•
002001 white   grey	•	•	•
002010 white   charcoal	•	•	•

## Solar energetic properties

Verso 1%		SOLAR ENERGETIC PROPERTIES										VISUAL PROPERTIES	
		FABRIC		FABRIC + GLAZING									
				INTERIOR									
				G-factor = total solar energy transmittance									
references	colours	front	back	As = Solar Absorbance %	Rs = Solar Reflectance %	Ts = Solar Transmittance %	Glazing A - Gv = 0,85 - U = 5,8	Glazing B - Gv = 0,76 - U = 2,9	Glazing C - Gv = 0,59 - U = 1,2	Glazing D - Gv = 0,32 - U = 1,1	Tv = Visible Light Transmittance %	Tuv = UV Transmittance %	
002002	white   white	front	back	front	back	front	back	front	back	front	back	front	back
002008	white   linen	front	back	front	back	front	back	front	back	front	back	front	back
002003	white   sand	front	back	front	back	front	back	front	back	front	back	front	back
002011	white   bronze	front	back	front	back	front	back	front	back	front	back	front	back
002007	white   pearl grey	front	back	front	back	front	back	front	back	front	back	front	back
002001	white   grey	front	back	front	back	front	back	front	back	front	back	front	back
002010	white   charcoal	front	back	front	back	front	back	front	back	front	back	front	back

GLAZING A = clear single glazing 4 mm	Gv = 0,85
GLAZING B = clear double glazing (4/12/4), space filled with air	Gv = 0,76
GLAZING C = double glazing (4/16/4), with a low emissivity coating in position 3, space filled with argon	Gv = 0,59
GLAZING D = reflective double glazing (4/16/4), with a low emissivity coating in position 2, space filled with argon	Gv = 0,32

# Verso 3%



GLASSFIBRE

OF = 3%

## Colours & references



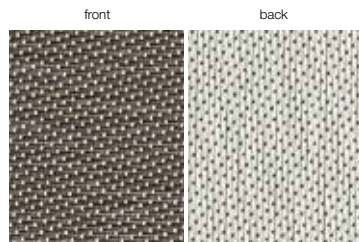
Verso 3% 002002 white | white



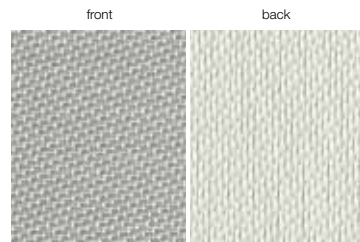
Verso 3% 002008 white | linen



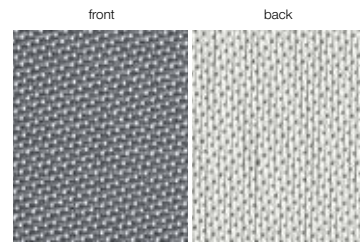
Verso 3% 002003 white | sand



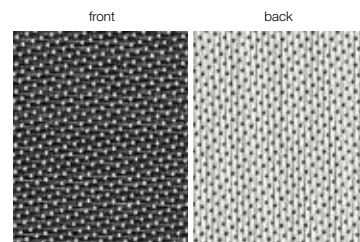
Verso 3% 002011 white | bronze



Verso 3% 002007 white | pearl grey



Verso 3% 002001 white | grey



Verso 3% 002010 white | charcoal

Verso 3%	160 cm	250 cm	320 cm
002002 white   white	•	•	•
002008 white   linen	•	•	•
002003 white   sand	•	•	•
002011 white   bronze	•	•	•
002007 white   pearl grey	•	•	•
002001 white   grey	•	•	•
002010 white   charcoal	•	•	•

## Solar energetic properties

Verso 3%		SOLAR ENERGETIC PROPERTIES										VISUAL PROPERTIES	
		FABRIC		FABRIC + GLAZING									
				INTERIOR									
				G-factor = total solar energy transmittance									
references	colours	front	back	As = Solar Absorbance %	Rs = Solar Reflectance %	Ts = Solar Transmittance %	Glazing A - Gv = 0,85 - U = 5,8	Glazing B - Gv = 0,76 - U = 2,9	Glazing C - Gv = 0,59 - U = 1,2	Glazing D - Gv = 0,32 - U = 1,1	Tv = Visible Light Transmittance %	Tuv = UV Transmittance %	
002002	white   white	front	back	13,4	65,8	20,8	0,36	0,37	0,36	0,25	20,1	3,0	
		front	back	13,0	66,2	20,8	0,35	0,37	0,36	0,25	20,1	3,0	
002008	white   linen	front	back	29,0	53,7	17,3	0,42	0,43	0,40	0,26	14,9	3,2	
		front	back	21,2	61,4	17,3	0,38	0,39	0,37	0,25	14,9	3,2	
002003	white   sand	front	back	35,6	49,0	15,4	0,45	0,45	0,41	0,27	12,0	3,0	
		front	back	24,7	59,9	15,4	0,38	0,40	0,38	0,26	12,0	3,0	
002011	white   bronze	front	back	73,1	17,6	9,3	0,62	0,61	0,51	0,29	7,9	4,0	
		front	back	45,0	45,7	9,3	0,46	0,47	0,42	0,27	7,9	4,0	
002007	white   pearl grey	front	back	50,2	37,6	12,2	0,51	0,51	0,45	0,28	10,3	3,6	
		front	back	32,9	54,8	12,2	0,41	0,42	0,39	0,26	10,3	3,6	
002001	white   grey	front	back	69,6	22,2	8,2	0,59	0,59	0,50	0,29	7,3	3,2	
		front	back	43,1	48,7	8,2	0,44	0,45	0,41	0,27	7,3	3,2	
002010	white   charcoal	front	back	81,6	12,0	6,3	0,65	0,64	0,53	0,30	6,2	3,2	
		front	back	48,4	45,2	6,3	0,46	0,47	0,42	0,27	6,2	3,2	

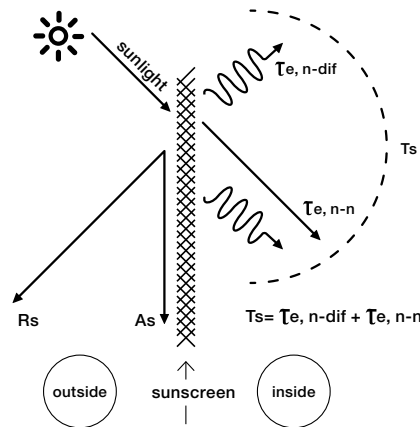
GLAZING A = clear single glazing 4 mm	Gv = 0,85
GLAZING B = clear double glazing (4/12/4), space filled with air	Gv = 0,76
GLAZING C = double glazing (4/16/4), with a low emissivity coating in position 3, space filled with argon	Gv = 0,59
GLAZING D = reflective double glazing (4/16/4), with a low emissivity coating in position 2, space filled with argon	Gv = 0,32

# Working of a sunscreen



## Sunscreen = protection against sunrays

Sunscreen means protection against the sunrays, so the function is the protection against light and heat, which is expressed in several properties.



<b>Rs</b>	Solar reflectance
<b>As</b>	Solar absorptance
<b>Ts</b>	Solar transmittance
<b>Te,n-dif</b>	Diffuse solar transmittance
<b>Te,n-n</b>	Normal solar transmittance

## Classes indicate effect of a sunscreen

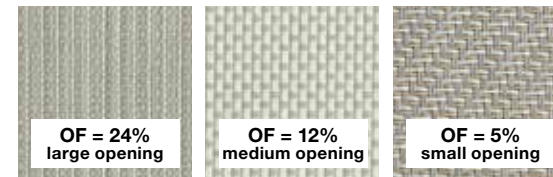
Based on certain properties, the screen can be split up in classes, from 0 to 4. Those classes are used, starting from the norm EN 14501, to indicate the effect of a certain sunscreen.

influence on thermal and visual comfort	
<b>Class 0</b>	very little effect
<b>Class 1</b>	little effect
<b>Class 2</b>	moderate effect
<b>Class 3</b>	good effect
<b>Class 4</b>	very good effect

## Visual properties

### Openness factor

The openness of a screen is indicated by the openness factor = **OF**. The openness coefficient is the relative area of the openings in the fabric seen under a given incidence. The openness factor is seen under a normal incidence.



The sunrays are subdivided in: **Visible light**, **UV-light** and **IR-light**.

**Visible light** (55% of the sun-energy) is that part for which our eyes are most sensitive. How larger the light intensity, how more detrimental for our eyes.

The factor Visible Light Transmittance = **Tv**, is the ratio of visible light that will be transmitted. How lower this factor can be kept, how better for the eyes.

**UV-light** (3% of the sun-energy) is the part of radiation which is detrimental for our health. This factor is indicated by the UV Transmittance = **Tuv**. This is the quantity UV-light transmitted by the sunscreen.

**IR-light** is invisible. This is however 42% of the sun-energy. These rays care for the reheating of solid substances and gases.

### Influence of colours

The choice of the colour has direct influence on the criteria which justify the use of sunscreen protection:

- Protection against visible light, expressed by the factor **Tv**.
- Protection against sun-energy, expressed by the **G** value.
- Protection against secondary heat, expressed by the factor **Qi**.
- Protection against UV-light, expressed by the factor **Tuv**.

## Visual properties: classes

### Glare control

The capacity of the solar protection device to control the luminance level of openings and to reduce the luminance contrasts between different zones within the field.

Tv,n-n	Tv,n-dif			
	Tv,n-dif < 0,02	0,02 ≤ Tv,n-dif < 0,04	0,04 ≤ Tv,n-dif < 0,08	Tv,n-dif ≥ 0,08
Tv,n-n > 0,10	0	0	0	0
0,05 < Tv,n-n ≤ 0,10	1	1	0	0
Tv,n-n ≤ 0,05	3	2	1	1
Tv,n-n = 0,00	4	3	2	2

### Privacy at night

Night privacy is the capacity of an internal or external blind or a shutter in the fully extended position or fully extended and closed position to protect persons, at night in normal light conditions from external view. External views means the ability of an external observer located 5m from the fully extended and closed product, to distinguish a person or object standing 1m behind the protection device in the room.

Tv,n-n	Tv,n-dif		
	0 < Tv,n-dif ≤ 0,04	0,04 < Tv,n-dif ≤ 0,15	Tv,n-dif > 0,15
Tv,n-n > 0,10	0	0	0
0,05 < Tv,n-n ≤ 0,10	1	1	1
Tv,n-n ≤ 0,05	2	2	2
Tv,n-n = 0,00	4	3	2

### Visual contact with the outside

Visual contact with the outside is the capacity of the solar protection device to allow an exterior view when it is fully extended. This function is affected by different light conditions during the day.

Tv,n-n	Tv,n-dif		
	0 < Tv,n-dif ≤ 0,04	0,04 < Tv,n-dif ≤ 0,15	Tv,n-dif > 0,15
Tv,n-n > 0,10	4	3	2
0,05 < Tv,n-n ≤ 0,10	3	2	1
Tv,n-n ≤ 0,05	2	1	0
Tv,n-n = 0,00	0	0	0

### Daylight utilisation

Daylight utilisation is characterised by:

- the capacity of the solar protection device to reduce the time period during the artificial light is required.
- the capacity of the solar protection device to optimise the daylight which is available.

CLASS	0	1	2	3	4
Tv,dif-h	Tv,dif-h < 0,02	0,02 ≤ Tv,dif-h < 0,10	0,10 ≤ Tv,dif-h < 0,25	0,25 ≤ Tv,dif-h < 0,40	Tv,dif-h ≥ 0,40




# Working of a sunscreen



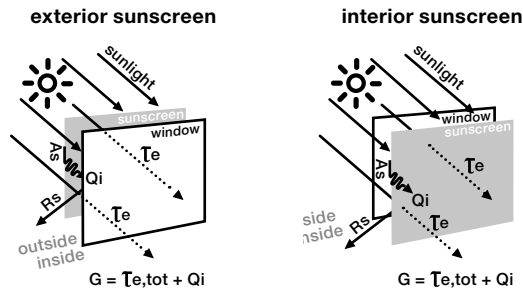
## Thermal comfort

### Fabric

Energy radiated by the sun, will be split up in 3 factors:

factor 1:	factor 2:	factor 3:
 <p><b>As = Solar absorptance</b> is the ratio of the absorbed flux to the incident flux.</p>	 <p><b>Rs = Solar reflectance</b> is the fraction of the incident solar radiation that is directly reflected by the component.</p>	 <p><b>Ts = Solar transmittance</b> is the sum of the (normal) direct solar transmittance and the diffuse solar transmittance. This is the fraction of the total transmitted energy to the total incident solar radiation.</p>
<b>These 3 factors together are always 100%</b>		

### The G-factor



<b>Rs</b>	Solar reflectance
<b>As</b>	Solar absorptance
<b>Te</b>	Direct solar transmittance
<b>Qi</b>	Secondary heat transfer factor
<b>G</b>	G-factor = total solar energy transmittance

Sunscreens are always used in combination with a glazing. These together will prevent a large quantity of energy, sent by the sun to the earth, which is indicated by the: Total Solar Energy Transmittance, or **G-factor**.

The **G** value is the ratio between the total solar energy transmitted into a room through a window and the incident solar energy on the window. The **G<sub>tot</sub>** is the solar factor of the combination of glazing and solar protection device.

The **G<sub>v</sub>** is the solar factor of the glazing alone. The shading coefficient is defined as the ratio of the solar factor of the combined glazing and solar protection device **G<sub>tot</sub>** to that of the glazing alone **G<sub>v</sub>**.

The total solar energy transmitted through a window consists of two parts:

- 1) Radiation: measured by the solar transmittance: **Te,tot**
- 2) Heat: measured by the secondary heat transfer: **Qi**

$$G = \overline{T_{e,tot}} + Q_i$$

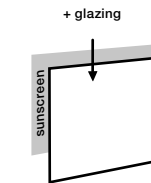
The factor **Te,tot**, is the quantity of energy, which will pass the combination solar protection device and window.

The factor **Qi** is the quantity of heat which is released by the absorption of energy in the sunscreen protection system = combination sunscreen + glazing.

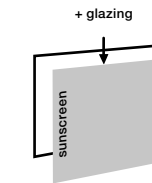
The **G-factor** is the most important factor to explain the efficiency of a combination sunscreen + glazing, as protection against the energy of the sun. The **G-factor** divided into his components explains the difference in efficiency between exterior and interior sunscreen.

$$G = \overline{T_{e,tot}} + Q_i$$

#### exterior sunscreen



#### interior sunscreen



The direct solar transmittance **Te,tot** is the same for interior and exterior use of sunscreens.

The secondary heat factor **Qi** for interior sunscreen is bigger then for exterior sunscreen. For interior use, the heat, produced by the absorption of energy, will be transmitted to the room inside. By exterior use, the heat will be transmitted to the outside, without any inconvenience at the inside.

Also the colour of the sunscreen has an influence on the **G-factor**. Dark colours will absorb a lot of sun energy and will transmit this to heat. If the screen is used for exterior, heat will have no influence inside the room, contrary to a screen used for interior. This is why a darker screen is ideal for exterior use and a lighter screen for interior use.

## Thermal comfort: classes

### Total Solar energy Transmittance = G-factor

CLASS	0	1	2	3	4
G <sub>tot</sub>	G <sub>tot</sub> ≥ 0,50	0,35 ≤ G <sub>tot</sub> < 0,50	0,15 ≤ G <sub>tot</sub> < 0,35	0,10 ≤ G <sub>tot</sub> < 0,15	G <sub>tot</sub> < 0,10

### Secondary Heat transfer = Qi

CLASS	0	1	2	3	4
Qi	Qi ≥ 0,30	0,20 ≤ Qi < 0,30	0,10 ≤ Qi < 0,20	0,03 ≤ Qi < 0,10	Qi < 0,03

### Normal Solar transmittance = protection against direct transmission

The ability of a solar protection device to protect persons and surroundings from direct irradiation is measured by the direct/direct solar transmittance of the device in combination with the glazing. **Te,n-n** is used as measure for this property.





**Screen Protectors SL** · c/ Alessandro Volta Nau 6A-7<sup>a</sup> · Pol. Ind. Plans d'Arau  
08787 La Pobla de Claramunt, Barcelona · T +34 93 8088004 · [screen@screenprotectors.com](mailto:screen@screenprotectors.com) · [www.copaco.be](http://www.copaco.be)