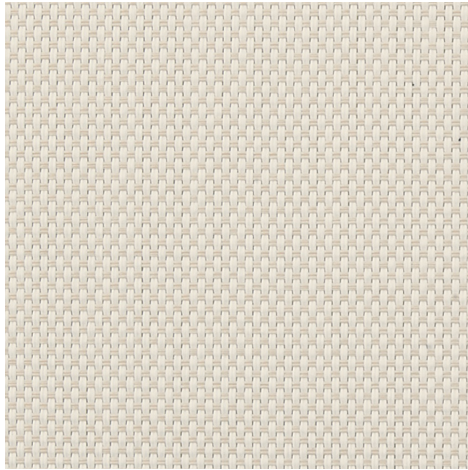
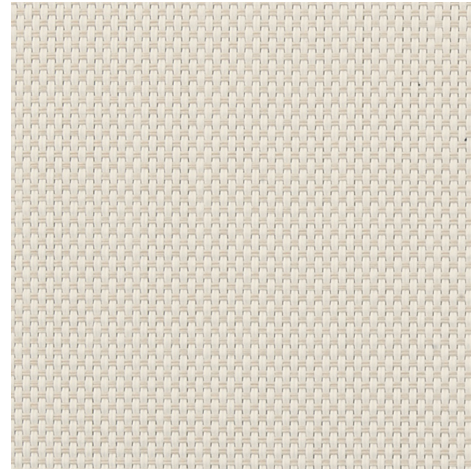


Natté 420P - white | linen (002008)
Technical info
FRONT

BACK


Widths		200 cm 250 cm 320 cm
Composition		29% Polyester + 71% PVC coated
Openness factor	NBN EN 410	1.00%
Weight	NF EN 12127	420.00 g/m ²
Thickness	ISO 5084	0.45 mm
Density	ISO 7211/2	WARP 25.00 yarn/cm WEFT 18.00 yarn/cm
Color fastness to artificial light	ISO 105 B02	>7
Roll length		30 m
Cleaning		With soapy water
Confection		By heat, high frequency or ultrasonic welding
Fire classification		
└ Europe	UNE-EN 13501-1:2007	B-s2,d0
└ France	NF P92-503	M2
└ Italy	UNI 9177	Class 1
└ Germany	DIN 4102	B1
└ Spain	UNE 13773	Clase 1

Natté 420P - white linen (002008)		Technical info	
Tear strength	ISO 4674-1 method 2		
↳ Original		WARP 5.60 daN	WEFT 4.00 daN
↳ After climatic chamber -30°C		WARP 5.19 daN	WEFT 3.44 daN
↳ After climatic chamber +70°C		WARP 5.47 daN	WEFT 3.59 daN
Elongation up to break	ISO 1421		
↳ Original		WARP 27.20 %	WEFT 22.20 %
↳ After ISO 4892-2, 1000 hr.		WARP 26.10 %	WEFT 21.10 %
↳ After climatic chamber -30°C		WARP 6.93 %	WEFT 4.02 %
↳ After climatic chamber +70°C		WARP 6.66 %	WEFT 3.75 %
Breaking strength	ISO 1421		
↳ Original		WARP 185.30 daN/5cm	WEFT 129.80 daN/5cm
↳ After ISO 4892-2, 1000 hr.		WARP 191.50 daN/5cm	WEFT 134.20 daN/5cm
↳ After climatic chamber -30°C		WARP 266.80 daN/5cm	WEFT 175.80 daN/5cm
↳ After climatic chamber +70°C		WARP 244.50 daN/5cm	WEFT 162.60 daN/5cm

Front - Interior

Natté 420P - white | linen (002008)

Visual properties

Tv = Visual light transmittance	11.00%
Tuv = UV transmittance	3.40%

Solar energetic properties

As = Solar absorptance	21.70%
Rs = Solar reflectance	62.60%
Ts = Solar transmittance	15.70%

Fabric + glazing: G-factor

	G	Te	Qi	SC
Glazing A	0.00	0.14	0.22	0.42
Glazing B	0.63	0.12	0.26	0.49
Glazing C	0.00	0.09	0.27	0.62
Glazing D	0.00	0.06	0.20	0.79

G = Total solar energy transmittance / Te = Direct solar transmittance / Qi = Secondary heat transfer factor / SC = Shading coefficient

Visual comfort

Normal solar transmittance	Class 4	Very good effect
Glare control	Class 4	Very good effect
Privacy night	Class 2	Moderate effect
Visual contact with the outside	Class 2	Moderate effect
Daylight utilisation	Class 0	Very little effect

Thermal comfort G-factor = Total solar energy transmittance

Glazing A	Glazing B	Glazing C	Glazing D
Class 1	Class 1	Class 1	Class 2

Thermal comfort Qi-factor = Secondary heat transfer factor

Glazing A	Glazing B	Glazing C	Glazing D
Class 4	Class 4	Class 4	Class 4

Class 0 = Very little effect / 1 = Little effect / 2 = Moderate effect / 3 = Good effect / 4 = Very good effect

Back - Interior

Natté 420P - white | linen (002008)

Visual properties

Tv = Visual light transmittance	11.00%
Tuv = UV transmittance	3.40%

Solar energetic properties

As = Solar absorptance	21.70%
Rs = Solar reflectance	62.60%
Ts = Solar transmittance	15.70%

Fabric + glazing: G-factor

	G	Te	Qi	SC
Glazing A	0.00	0.14	0.22	0.42
Glazing B	0.63	0.12	0.26	0.49
Glazing C	0.00	0.09	0.27	0.62
Glazing D	0.00	0.06	0.20	0.79

G = Total solar energy transmittance / Te = Direct solar transmittance / Qi = Secondary heat transfer factor / SC = Shading coefficient

Visual comfort

Normal solar transmittance	Class 4	Very good effect
Glare control	Class 4	Very good effect
Privacy night	Class 2	Moderate effect
Visual contact with the outside	Class 2	Moderate effect
Daylight utilisation	Class 0	Very little effect

Thermal comfort G-factor = Total solar energy transmittance

Glazing A	Glazing B	Glazing C	Glazing D
Class 1	Class 1	Class 1	Class 2

Thermal comfort Qi-factor = Secondary heat transfer factor

Glazing A	Glazing B	Glazing C	Glazing D
Class 4	Class 4	Class 4	Class 4

Class 0 = Very little effect / 1 = Little effect / 2 = Moderate effect / 3 = Good effect / 4 = Very good effect