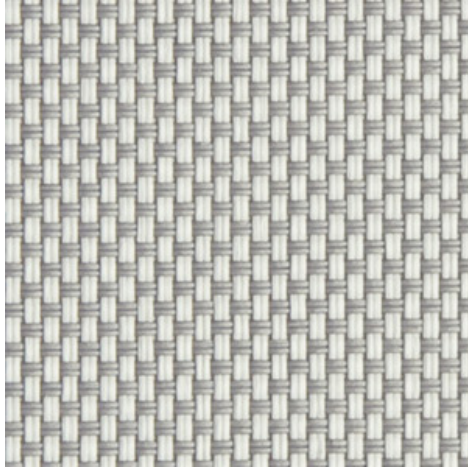


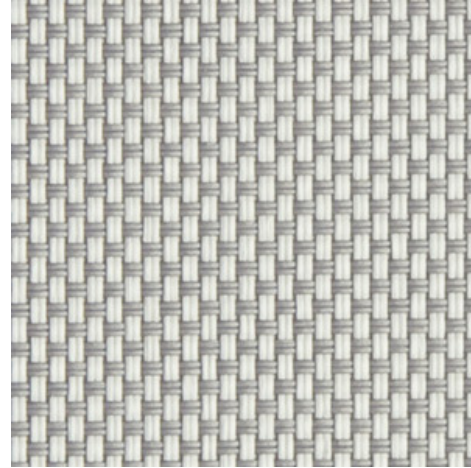
**Natté 380P - white | pearl grey (002007)**

Technical info

**FRONT**



**BACK**



<b>Widths</b>		250 cm   200 cm   320 cm
<b>Composition</b>		Polyester with PVC coating
<b>Openness factor</b>	NBN EN 410	5.00%
<b>Weight</b>	NF EN 12127	415.00 g/m <sup>2</sup>
<b>Thickness</b>	ISO 5084	0.42 mm
<b>Density</b>	ISO 7211/2	WARP 18.00 yarn/cm      WEFT 19.00 yarn/cm
<b>Color fastness to artificial light</b>	ISO 105 B02	>7
<b>Roll length</b>		30 m
<b>Cleaning</b>		With soapy water
<b>Confection</b>		By heat, high frequency or ultrasonic welding
<b>Fire classification</b>		
└ Europe	UNE-EN 13501-1:2007	B-s2,d0
└ France	NF P92-503	M2
└ Italy	UNI 9177	Class 1
└ Germany	DIN 4102	
└ Spain	UNE 13773	Clase 1

**Natté 380P - white | pearl grey (002007)**
**Technical info**

<b>Tear strength</b>	ISO 4674-1 methode 2		
↳ Original		WARP 4.10 daN	WEFT 3.65 daN
↳ After climatic chamber -30°C		WARP 3.95 daN	WEFT 3.80 daN
↳ After climatic chamber +70°C		WARP 4.25 daN	WEFT 3.65 daN
<b>Elongation up to break</b>	ISO 1421		
↳ Original		WARP 23.50 %	WEFT 20.50 %
↳ After color fastness to artificial light		WARP 23.00 %	WEFT 21.00 %
↳ After climatic chamber -30°C		WARP 23.00 %	WEFT 20.00 %
↳ After climatic chamber +70°C		WARP 24.00 %	WEFT 21.50 %
<b>Breaking strength</b>	ISO 1421		
↳ Original		WARP 165.00 daN/5cm	WEFT 155.00 daN/5cm
↳ After color fastness to artificial light		WARP 160.00 daN/5cm	WEFT 160.00 daN/5cm
↳ After climatic chamber -30°C		WARP 165.00 daN/5cm	WEFT 165.00 daN/5cm
↳ After climatic chamber +70°C		WARP 165.00 daN/5cm	WEFT 165.00 daN/5cm

**Front - Interior**

Natté 380P - white | pearl grey (002007)

**Visual properties**

<b>Tv = Visual light transmittance</b>	11.40%
<b>Tuv = UV transmittance</b>	5.60%

**Solar energetic properties**

<b>As = Solar absorptance</b>	38.30%
<b>Rs = Solar reflectance</b>	45.30%
<b>Ts = Solar transmittance</b>	16.40%

**Fabric + glazing: G-factor**

	<b>G</b>	<b>Te</b>	<b>Qi</b>	<b>SC</b>
<b>Glazing A</b>	0.47	0.14	0.33	0.55
<b>Glazing B</b>	0.47	0.12	0.35	0.62
<b>Glazing C</b>	0.42	0.09	0.33	0.72
<b>Glazing D</b>	0.27	0.05	0.22	0.84

G = Total solar energy transmittance / Te = Direct solar transmittance / Qi = Secondary heat transfer factor / SC = Shading coefficient

**Visual comfort**

<b>Normal solar transmittance</b>	Class 3	Good effect
<b>Glare control</b>	Class 0	Very little effect
<b>Privacy night</b>	Class 1	Little effect
<b>Visual contact with the outside</b>	Class 3	Good effect
<b>Daylight utilisation</b>	Class 1	Little effect

**Thermal comfort G-factor = Total solar energy transmittance**

<b>Glazing A</b>	<b>Glazing B</b>	<b>Glazing C</b>	<b>Glazing D</b>
Class 1	Class 1	Class 1	Class 2

**Thermal comfort Qi-factor = Secondary heat transfer factor**

<b>Glazing A</b>	<b>Glazing B</b>	<b>Glazing C</b>	<b>Glazing D</b>
Class 0	Class 0	Class 0	Class 1

Class 0 = Very little effect / 1 = Little effect / 2 = Moderate effect / 3 = Good effect / 4 = Very good effect

**Back - Interior**

Natté 380P - white | pearl grey (002007)

**Visual properties**

<b>Tv = Visual light transmittance</b>	11.40%
<b>Tuv = UV transmittance</b>	5.60%

**Solar energetic properties**

<b>As = Solar absorptance</b>	38.40%
<b>Rs = Solar reflectance</b>	45.20%
<b>Ts = Solar transmittance</b>	16.40%

**Fabric + glazing: G-factor**

	<b>G</b>	<b>Te</b>	<b>Qi</b>	<b>SC</b>
<b>Glazing A</b>	0.47	0.14	0.33	0.55
<b>Glazing B</b>	0.47	0.12	0.35	0.62
<b>Glazing C</b>	0.42	0.09	0.33	0.72
<b>Glazing D</b>	0.27	0.05	0.22	0.84

G = Total solar energy transmittance / Te = Direct solar transmittance / Qi = Secondary heat transfer factor / SC = Shading coefficient

**Visual comfort**

<b>Normal solar transmittance</b>	Class 3	Good effect
<b>Glare control</b>	Class 0	Very little effect
<b>Privacy night</b>	Class 1	Little effect
<b>Visual contact with the outside</b>	Class 3	Good effect
<b>Daylight utilisation</b>	Class 1	Little effect

**Thermal comfort G-factor = Total solar energy transmittance**

<b>Glazing A</b>	<b>Glazing B</b>	<b>Glazing C</b>	<b>Glazing D</b>
Class 1	Class 1	Class 1	Class 2

**Thermal comfort Qi-factor = Secondary heat transfer factor**

<b>Glazing A</b>	<b>Glazing B</b>	<b>Glazing C</b>	<b>Glazing D</b>
Class 0	Class 0	Class 0	Class 1

Class 0 = Very little effect / 1 = Little effect / 2 = Moderate effect / 3 = Good effect / 4 = Very good effect