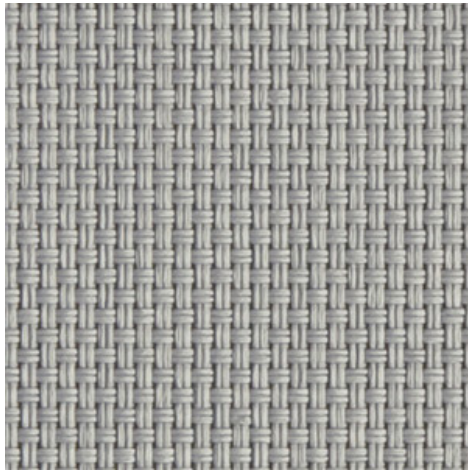


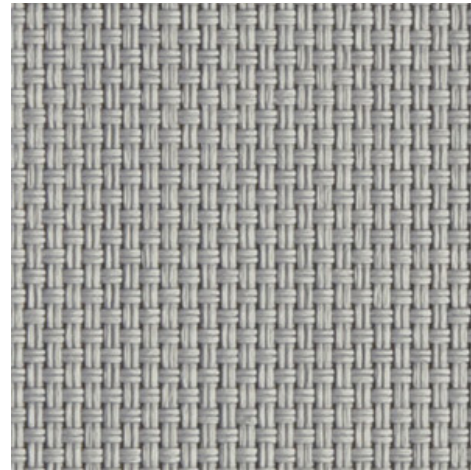
Natté 380P - pearl grey | pearl grey
(007007)

Technical info

FRONT



BACK



Widths		250 cm 200 cm 320 cm
Composition		Polyester with PVC coating
Openness factor	NBN EN 410	5.00%
Weight	NF EN 12127	415.00 g/m ²
Thickness	ISO 5084	0.42 mm
Density	ISO 7211/2	WARP 18.00 yarn/cm WEFT 19.00 yarn/cm
Color fastness to artificial light	ISO 105 B02	>7
Roll length		30 m
Cleaning		With soapy water
Confection		By heat, high frequency or ultrasonic welding
Fire classification		
└ Europe	UNE-EN 13501-1:2007	B-s2,d0
└ France	NF P92-503	M2
└ Italy	UNI 9177	Class 1
└ Germany	DIN 4102	
└ Spain	UNE 13773	Clase 1

Natté 380P - pearl grey | pearl grey
(007007)

Technical info

Tear strength		ISO 4674-1 methode 2	
↳ Original	WARP	4.10 daN	WEFT 3.65 daN
↳ After climatic chamber -30°C	WARP	3.95 daN	WEFT 3.80 daN
↳ After climatic chamber +70°C	WARP	4.25 daN	WEFT 3.65 daN
Elongation up to break		ISO 1421	
↳ Original	WARP	23.50 %	WEFT 20.50 %
↳ After color fastness to artificial light	WARP	23.00 %	WEFT 21.00 %
↳ After climatic chamber -30°C	WARP	23.00 %	WEFT 20.00 %
↳ After climatic chamber +70°C	WARP	24.00 %	WEFT 21.50 %
Breaking strength		ISO 1421	
↳ Original	WARP	165.00 daN/5cm	WEFT 155.00 daN/5cm
↳ After color fastness to artificial light	WARP	160.00 daN/5cm	WEFT 160.00 daN/5cm
↳ After climatic chamber -30°C	WARP	165.00 daN/5cm	WEFT 165.00 daN/5cm
↳ After climatic chamber +70°C	WARP	165.00 daN/5cm	WEFT 165.00 daN/5cm

Front - Interior

Natté 380P - pearl grey | pearl grey (007007)

Visual properties

Tv = Visual light transmittance	6.20%
Tuv = UV transmittance	4.90%

Solar energetic properties

As = Solar absorptance	56.70%
Rs = Solar reflectance	33.00%
Ts = Solar transmittance	10.30%

Fabric + glazing: G-factor

	G	Te	Qi	SC
Glazing A	0.53	0.09	0.45	0.63
Glazing B	0.53	0.07	0.46	0.70
Glazing C	0.46	0.06	0.41	0.78
Glazing D	0.28	0.03	0.25	0.87

G = Total solar energy transmittance / Te = Direct solar transmittance / Qi = Secondary heat transfer factor / SC = Shading coefficient

Visual comfort

Normal solar transmittance	Class 4	Very good effect
Glare control	Class 3	Good effect
Privacy night	Class 2	Moderate effect
Visual contact with the outside	Class 2	Moderate effect
Daylight utilisation	Class 1	Little effect

Thermal comfort G-factor = Total solar energy transmittance

Glazing A	Glazing B	Glazing C	Glazing D
Class 0	Class 0	Class 1	Class 2

Thermal comfort Qi-factor = Secondary heat transfer factor

Glazing A	Glazing B	Glazing C	Glazing D
Class 0	Class 0	Class 0	Class 1

Class 0 = Very little effect / 1 = Little effect / 2 = Moderate effect / 3 = Good effect / 4 = Very good effect

Back - Interior

Natté 380P - pearl grey | pearl grey (007007)

Visual properties

Tv = Visual light transmittance	6.20%
Tuv = UV transmittance	4.90%

Solar energetic properties

As = Solar absorptance	56.80%
Rs = Solar reflectance	32.90%
Ts = Solar transmittance	10.30%

Fabric + glazing: G-factor

	G	Te	Qi	SC
Glazing A	0.53	0.09	0.45	0.63
Glazing B	0.53	0.07	0.46	0.70
Glazing C	0.46	0.06	0.41	0.78
Glazing D	0.28	0.03	0.25	0.87

G = Total solar energy transmittance / Te = Direct solar transmittance / Qi = Secondary heat transfer factor / SC = Shading coefficient

Visual comfort

Normal solar transmittance	Class 4	Very good effect
Glare control	Class 3	Good effect
Privacy night	Class 2	Moderate effect
Visual contact with the outside	Class 2	Moderate effect
Daylight utilisation	Class 1	Little effect

Thermal comfort G-factor = Total solar energy transmittance

Glazing A	Glazing B	Glazing C	Glazing D
Class 0	Class 0	Class 1	Class 2

Thermal comfort Qi-factor = Secondary heat transfer factor

Glazing A	Glazing B	Glazing C	Glazing D
Class 0	Class 0	Class 0	Class 1

Class 0 = Very little effect / 1 = Little effect / 2 = Moderate effect / 3 = Good effect / 4 = Very good effect