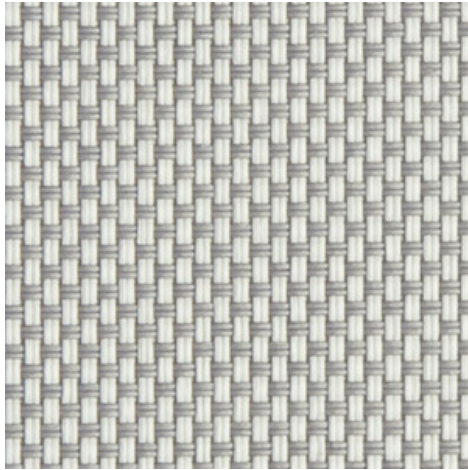
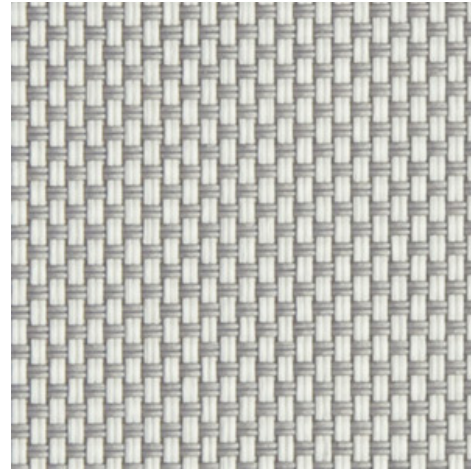


Natté 380P - blanco | gris perla (002007)
Technical info
FRONT

BACK


Widths		250 cm 200 cm 320 cm
Composition		Fibra de poliéster recubierta de PVC
Openness factor	NBN EN 410	5.00%
Weight	NF EN 12127	415.00 g/m ²
Thickness	ISO 5084	0.42 mm
Density	ISO 7211/2	WARP 18.00 yarn/cm WEFT 19.00 yarn/cm
Color fastness to artificial light	ISO 105 B02	>7
Roll length		30 m
Cleaning		Con acqua saponata
Confection		By heat, high frequency or ultrasonic welding
Fire classification		
└ Europe	UNE-EN 13501-1:2007	C-s3, d0
└ France	NF P92-503	
└ Italy	UNI 9177	Class 1
└ Germany	DIN 4102	
└ UK	BS 5867	
└ USA	NFPA 701	FR

Natté 380P - blanco | gris perla (002007)
Technical info

Tear strength	ISO 4674-1 methode 2		
↳ Original		WARP 4.10 daN	WEFT 3.65 daN
↳ After climatic chamber -30°C		WARP 3.95 daN	WEFT 3.80 daN
↳ After climatic chamber +70°C		WARP 4.25 daN	WEFT 3.65 daN
Elongation up to break	ISO 1421		
↳ Original		WARP 23.50 %	WEFT 20.50 %
↳ After color fastness to artificial light		WARP 23.00 %	WEFT 21.00 %
↳ After climatic chamber -30°C		WARP 23.00 %	WEFT 20.00 %
↳ After climatic chamber +70°C		WARP 24.00 %	WEFT 21.50 %
Breaking strength	ISO 1421		
↳ Original		WARP 165.00 daN/5cm	WEFT 155.00 daN/5cm
↳ After color fastness to artificial light		WARP 160.00 daN/5cm	WEFT 160.00 daN/5cm
↳ After climatic chamber -30°C		WARP 165.00 daN/5cm	WEFT 165.00 daN/5cm
↳ After climatic chamber +70°C		WARP 165.00 daN/5cm	WEFT 165.00 daN/5cm

Front - Interior

Natté 380P - blanco | gris perla (002007)

Visual properties

Tv = Visual light transmittance	11.40%
Tuv = UV transmittance	5.60%

Solar energetic properties

As = Solar absorptance	38.30%
Rs = Solar reflectance	45.30%
Ts = Solar transmittance	16.40%

Fabric + glazing: G-factor

	G	Te	Qi	SC
Glazing A	0.47	0.14	0.33	0.55
Glazing B	0.47	0.12	0.35	0.62
Glazing C	0.42	0.09	0.33	0.72
Glazing D	0.27	0.05	0.22	0.84

G = Total solar energy transmittance / Te = Direct solar transmittance / Qi = Secondary heat transfer factor / SC = Shading coefficient

Visual comfort

Normal solar transmittance	Class 3	Good effect
Glare control	Class 0	Very little effect
Privacy night	Class 1	Little effect
Visual contact with the outside	Class 3	Good effect
Daylight utilisation	Class 1	Little effect

Thermal comfort G-factor = Total solar energy transmittance

Glazing A	Glazing B	Glazing C	Glazing D
Class 1	Class 1	Class 1	Class 2

Thermal comfort Qi-factor = Secondary heat transfer factor

Glazing A	Glazing B	Glazing C	Glazing D
Class 0	Class 0	Class 0	Class 1

Class 0 = Very little effect / 1 = Little effect / 2 = Moderate effect / 3 = Good effect / 4 = Very good effect

Back - Interior

Natté 380P - blanco | gris perla (002007)

Visual properties

Tv = Visual light transmittance	11.40%
Tuv = UV transmittance	5.60%

Solar energetic properties

As = Solar absorptance	38.40%
Rs = Solar reflectance	45.20%
Ts = Solar transmittance	16.40%

Fabric + glazing: G-factor

	G	Te	Qi	SC
Glazing A	0.47	0.14	0.33	0.55
Glazing B	0.47	0.12	0.35	0.62
Glazing C	0.42	0.09	0.33	0.72
Glazing D	0.27	0.05	0.22	0.84

G = Total solar energy transmittance / Te = Direct solar transmittance / Qi = Secondary heat transfer factor / SC = Shading coefficient

Visual comfort

Normal solar transmittance	Class 3	Good effect
Glare control	Class 0	Very little effect
Privacy night	Class 1	Little effect
Visual contact with the outside	Class 3	Good effect
Daylight utilisation	Class 1	Little effect

Thermal comfort G-factor = Total solar energy transmittance

Glazing A	Glazing B	Glazing C	Glazing D
Class 1	Class 1	Class 1	Class 2

Thermal comfort Qi-factor = Secondary heat transfer factor

Glazing A	Glazing B	Glazing C	Glazing D
Class 0	Class 0	Class 0	Class 1

Class 0 = Very little effect / 1 = Little effect / 2 = Moderate effect / 3 = Good effect / 4 = Very good effect