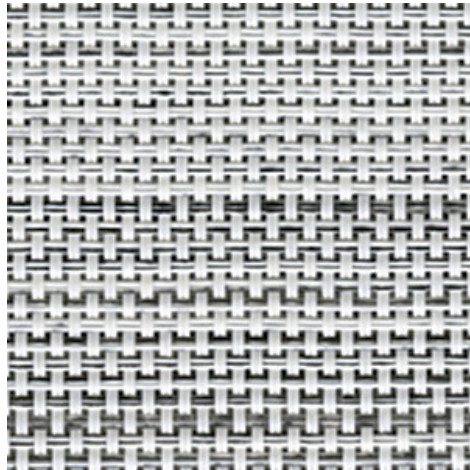


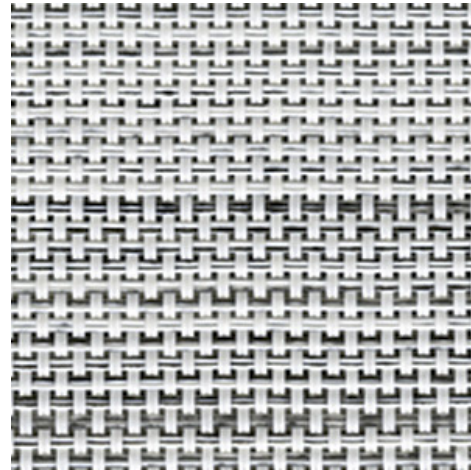
Natté 380 - white | white-charcoal
(002049)

Technical info

FRONT



BACK



| | | |
|---|---------------------|---|
| Widths | | 200 cm 250 cm 320 cm |
| Composition | | Fibreglass 36% - PVC 64% |
| Openness factor | NBN EN 410 | 5.00% |
| Weight | NF EN 12127 | 385.00 g/m ² |
| Thickness | ISO 5084 | 0.35 mm |
| Density | ISO 7211/2 | WARP 20.00 yarn/cm WEFT 20.00 yarn/cm |
| Color fastness to artificial light | ISO 105 B02 | >7 |
| Roll length | | 30 m |
| Cleaning | | With soapy water |
| Confection | | By heat, high frequency or ultrasonic welding |
| Fire classification | | |
| └ Europe | UNE-EN 13501-1:2007 | awaiting results |
| └ France | NF P92-503 | M2 |
| └ Italy | UNI 9177 | Class 1 |
| └ Germany | DIN 4102 | B2 |
| └ UK | BS 5867 | C |
| └ USA | NFPA 701 | FR |

Natté 380 - white | white-charcoal
(002049)

Technical info

| | | | |
|--|----------------------|---------------------|---------------------|
| Tear strength | ISO 4674-1 methode 2 | | |
| ↳ Original | | WARP 4.90 daN | WEFT 4.70 daN |
| ↳ After climatic chamber -30°C | | WARP 5.10 daN | WEFT 5.15 daN |
| ↳ After climatic chamber +70°C | | WARP 5.30 daN | WEFT 4.80 daN |
| Elongation up to break | ISO 1421 | | |
| ↳ Original | | WARP 3.70 % | WEFT 3.20 % |
| ↳ After color fastness to artificial light | | WARP 3.70 % | WEFT 3.00 % |
| ↳ After climatic chamber -30°C | | WARP 4.00 % | WEFT 3.00 % |
| ↳ After climatic chamber +70°C | | WARP 3.60 % | WEFT 2.90 % |
| Breaking strength | ISO 1421 | | |
| ↳ Original | | WARP 160.00 daN/5cm | WEFT 160.00 daN/5cm |
| ↳ After color fastness to artificial light | | WARP 150.00 daN/5cm | WEFT 160.00 daN/5cm |
| ↳ After climatic chamber -30°C | | WARP 150.00 daN/5cm | WEFT 140.00 daN/5cm |
| ↳ After climatic chamber +70°C | | WARP 120.00 daN/5cm | WEFT 120.00 daN/5cm |

Front - Interior

Natté 380 - white | white-charcoal (002049)

Visual properties

| | |
|--|--------|
| Tv = Visual light transmittance | 17.90% |
| Tuv = UV transmittance | 11.00% |

Solar energetic properties

| | |
|---------------------------------|--------|
| As = Solar absorptance | 35.60% |
| Rs = Solar reflectance | 45.50% |
| Ts = Solar transmittance | 18.90% |

Fabric + glazing: G-factor

| | G | Te | Qi | SC |
|------------------|----------|-----------|-----------|-----------|
| Glazing A | 0.47 | 0.16 | 0.31 | 0.56 |
| Glazing B | 0.47 | 0.14 | 0.33 | 0.62 |
| Glazing C | 0.42 | 0.11 | 0.32 | 0.72 |
| Glazing D | 0.27 | 0.06 | 0.21 | 0.84 |

G = Total solar energy transmittance / Te = Direct solar transmittance / Qi = Secondary heat transfer factor / SC = Shading coefficient

Visual comfort

| | | |
|--|---------|--------------------|
| Normal solar transmittance | Class 2 | Moderate effect |
| Glare control | Class 0 | Very little effect |
| Privacy night | Class 0 | Very little effect |
| Visual contact with the outside | Class 3 | Good effect |
| Daylight utilisation | Class 2 | Moderate effect |

Thermal comfort G-factor = Total solar energy transmittance

| Glazing A | Glazing B | Glazing C | Glazing D |
|------------------|------------------|------------------|------------------|
| Class 1 | Class 1 | Class 1 | Class 2 |

Thermal comfort Qi-factor = Secondary heat transfer factor

| Glazing A | Glazing B | Glazing C | Glazing D |
|------------------|------------------|------------------|------------------|
| Class 0 | Class 0 | Class 0 | Class 1 |

Class 0 = Very little effect / 1 = Little effect / 2 = Moderate effect / 3 = Good effect / 4 = Very good effect

Back - Interior

Natté 380 - white | white-charcoal (002049)

Visual properties

| | |
|--|--------|
| Tv = Visual light transmittance | 17.90% |
| Tuv = UV transmittance | 11.00% |

Solar energetic properties

| | |
|---------------------------------|--------|
| As = Solar absorptance | 35.60% |
| Rs = Solar reflectance | 45.50% |
| Ts = Solar transmittance | 18.90% |

Fabric + glazing: G-factor

| | G | Te | Qi | SC |
|------------------|----------|-----------|-----------|-----------|
| Glazing A | 0.47 | 0.16 | 0.31 | 0.56 |
| Glazing B | 0.47 | 0.14 | 0.33 | 0.62 |
| Glazing C | 0.42 | 0.11 | 0.32 | 0.72 |
| Glazing D | 0.27 | 0.06 | 0.21 | 0.84 |

G = Total solar energy transmittance / Te = Direct solar transmittance / Qi = Secondary heat transfer factor / SC = Shading coefficient

Visual comfort

| | | |
|--|---------|--------------------|
| Normal solar transmittance | Class 2 | Moderate effect |
| Glare control | Class 0 | Very little effect |
| Privacy night | Class 0 | Very little effect |
| Visual contact with the outside | Class 3 | Good effect |
| Daylight utilisation | Class 2 | Moderate effect |

Thermal comfort G-factor = Total solar energy transmittance

| Glazing A | Glazing B | Glazing C | Glazing D |
|------------------|------------------|------------------|------------------|
| Class 1 | Class 1 | Class 1 | Class 2 |

Thermal comfort Qi-factor = Secondary heat transfer factor

| Glazing A | Glazing B | Glazing C | Glazing D |
|------------------|------------------|------------------|------------------|
| Class 0 | Class 0 | Class 0 | Class 1 |

Class 0 = Very little effect / 1 = Little effect / 2 = Moderate effect / 3 = Good effect / 4 = Very good effect