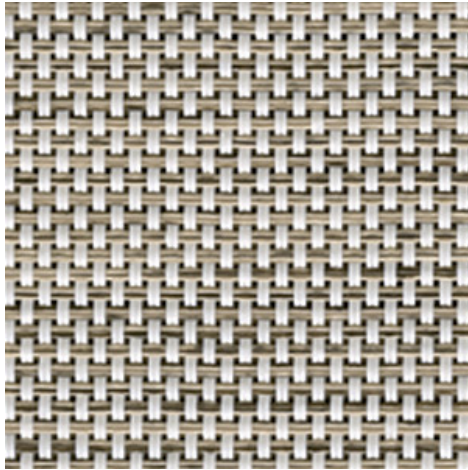
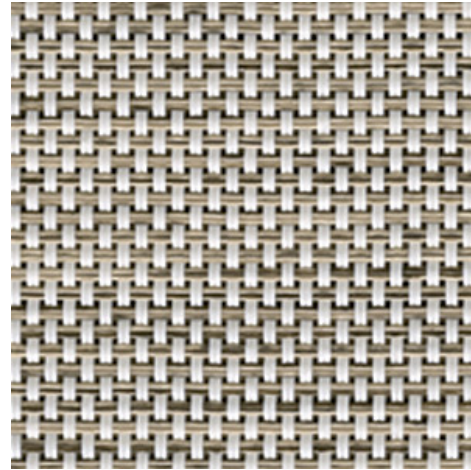


**Natté 380 - white | sand-bronze (002048)**
**Technical info**
**FRONT**

**BACK**


<b>Widths</b>		200 cm   250 cm   320 cm
<b>Composition</b>		Fibreglass 36% - PVC 64%
<b>Openness factor</b>	NBN EN 410	5.00%
<b>Weight</b>	NF EN 12127	385.00 g/m <sup>2</sup>
<b>Thickness</b>	ISO 5084	0.35 mm
<b>Density</b>	ISO 7211/2	WARP 20.00 yarn/cm      WEFT 20.00 yarn/cm
<b>Color fastness to artificial light</b>	ISO 105 B02	>7
<b>Roll length</b>		30 m
<b>Cleaning</b>		With soapy water
<b>Confection</b>		By heat, high frequency or ultrasonic welding
<b>Fire classification</b>		
└ Europe	UNE-EN 13501-1:2007	awaiting results
└ France	NF P92-503	M2
└ Italy	UNI 9177	Class 1
└ Germany	DIN 4102	B2
└ UK	BS 5867	C
└ USA	NFPA 701	FR

**Natté 380 - white | sand-bronze (002048)**
**Technical info**

<b>Tear strength</b>	ISO 4674-1 methode 2		
↳ Original		WARP 4.90 daN	WEFT 4.70 daN
↳ After climatic chamber -30°C		WARP 5.10 daN	WEFT 5.15 daN
↳ After climatic chamber +70°C		WARP 5.30 daN	WEFT 4.80 daN
<b>Elongation up to break</b>	ISO 1421		
↳ Original		WARP 3.70 %	WEFT 3.20 %
↳ After color fastness to artificial light		WARP 3.70 %	WEFT 3.00 %
↳ After climatic chamber -30°C		WARP 4.00 %	WEFT 3.00 %
↳ After climatic chamber +70°C		WARP 3.60 %	WEFT 2.90 %
<b>Breaking strength</b>	ISO 1421		
↳ Original		WARP 160.00 daN/5cm	WEFT 160.00 daN/5cm
↳ After color fastness to artificial light		WARP 150.00 daN/5cm	WEFT 160.00 daN/5cm
↳ After climatic chamber -30°C		WARP 150.00 daN/5cm	WEFT 140.00 daN/5cm
↳ After climatic chamber +70°C		WARP 120.00 daN/5cm	WEFT 120.00 daN/5cm

**Front - Interior**

Natté 380 - white | sand-bronze (002048)

**Visual properties**

<b>Tv = Visual light transmittance</b>	15.20%
<b>Tuv = UV transmittance</b>	10.20%

**Solar energetic properties**

<b>As = Solar absorptance</b>	41.20%
<b>Rs = Solar reflectance</b>	41.10%
<b>Ts = Solar transmittance</b>	17.70%

**Fabric + glazing: G-factor**

	<b>G</b>	<b>Te</b>	<b>Qi</b>	<b>SC</b>
<b>Glazing A</b>	0.50	0.15	0.34	0.58
<b>Glazing B</b>	0.50	0.13	0.37	0.65
<b>Glazing C</b>	0.44	0.10	0.34	0.47
<b>Glazing D</b>	0.27	0.06	0.22	0.85

G = Total solar energy transmittance / Te = Direct solar transmittance / Qi = Secondary heat transfer factor / SC = Shading coefficient

**Visual comfort**

<b>Normal solar transmittance</b>	Class 3	Good effect
<b>Glare control</b>	Class 0	Very little effect
<b>Privacy night</b>	Class 1	Little effect
<b>Visual contact with the outside</b>	Class 3	Good effect
<b>Daylight utilisation</b>	Class 2	Moderate effect

**Thermal comfort G-factor = Total solar energy transmittance**

<b>Glazing A</b>	<b>Glazing B</b>	<b>Glazing C</b>	<b>Glazing D</b>
Class 1	Class 1	Class 1	Class 2

**Thermal comfort Qi-factor = Secondary heat transfer factor**

<b>Glazing A</b>	<b>Glazing B</b>	<b>Glazing C</b>	<b>Glazing D</b>
Class 0	Class 0	Class 0	Class 1

Class 0 = Very little effect / 1 = Little effect / 2 = Moderate effect / 3 = Good effect / 4 = Very good effect

**Back - Interior**

Natté 380 - white | sand-bronze (002048)

**Visual properties**

<b>Tv = Visual light transmittance</b>	15.20%
<b>Tuv = UV transmittance</b>	10.20%

**Solar energetic properties**

<b>As = Solar absorptance</b>	41.20%
<b>Rs = Solar reflectance</b>	41.10%
<b>Ts = Solar transmittance</b>	17.70%

**Fabric + glazing: G-factor**

	<b>G</b>	<b>Te</b>	<b>Qi</b>	<b>SC</b>
<b>Glazing A</b>	0.50	0.15	0.34	0.58
<b>Glazing B</b>	0.50	0.13	0.37	0.65
<b>Glazing C</b>	0.44	0.10	0.34	0.74
<b>Glazing D</b>	0.27	0.06	0.22	0.85

G = Total solar energy transmittance / Te = Direct solar transmittance / Qi = Secondary heat transfer factor / SC = Shading coefficient

**Visual comfort**

<b>Normal solar transmittance</b>	Class 3	Good effect
<b>Glare control</b>	Class 0	Very little effect
<b>Privacy night</b>	Class 1	Little effect
<b>Visual contact with the outside</b>	Class 3	Good effect
<b>Daylight utilisation</b>	Class 2	Moderate effect

**Thermal comfort G-factor = Total solar energy transmittance**

<b>Glazing A</b>	<b>Glazing B</b>	<b>Glazing C</b>	<b>Glazing D</b>
Class 1	Class 1	Class 1	Class 2

**Thermal comfort Qi-factor = Secondary heat transfer factor**

<b>Glazing A</b>	<b>Glazing B</b>	<b>Glazing C</b>	<b>Glazing D</b>
Class 0	Class 0	Class 0	Class 1

Class 0 = Very little effect / 1 = Little effect / 2 = Moderate effect / 3 = Good effect / 4 = Very good effect