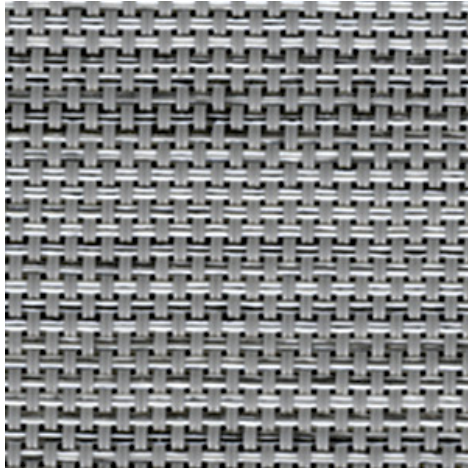


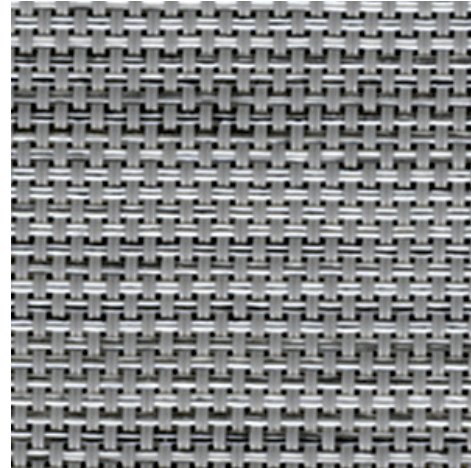
Natté 380 - perlgrau | weiß-schwarz
(007049)

Technical info

FRONT



BACK



Widths		200 cm 250 cm 320 cm
Composition		Glasfaser 36% - PVC 64%
Openness factor	NBN EN 410	5.00%
Weight	NF EN 12127	385.00 g/m ²
Thickness	ISO 5084	0.35 mm
Density	ISO 7211/2	WARP 20.00 yarn/cm WEFT 20.00 yarn/cm
Color fastness to artificial light	ISO 105 B02	>7
Roll length		30 m
Cleaning		Mit Seifenwasser
Confection		By heat, high frequency or ultrasonic welding
Fire classification		
└ Europe	UNE-EN 13501-1:2007	C-s3,d0
└ France	NF P92-503	M2
└ Italy	UNI 9177	Class 1
└ UK	BS 5867	C
└ USA	NFPA 701	FR

Natté 380 - perlgrau | weiß-schwarz
(007049)

Technical info

Tear strength	ISO 4674-1 methode 2		
↳ Original		WARP 4.90 daN	WEFT 4.70 daN
↳ After climatic chamber -30°C		WARP 5.10 daN	WEFT 5.15 daN
↳ After climatic chamber +70°C		WARP 5.30 daN	WEFT 4.80 daN
Elongation up to break	ISO 1421		
↳ Original		WARP 3.70 %	WEFT 3.20 %
↳ After color fastness to artificial light		WARP 3.70 %	WEFT 3.00 %
↳ After climatic chamber -30°C		WARP 4.00 %	WEFT 3.00 %
↳ After climatic chamber +70°C		WARP 3.60 %	WEFT 2.90 %
Breaking strength	ISO 1421		
↳ Original		WARP 160.00 daN/5cm	WEFT 160.00 daN/5cm
↳ After color fastness to artificial light		WARP 150.00 daN/5cm	WEFT 160.00 daN/5cm
↳ After climatic chamber -30°C		WARP 150.00 daN/5cm	WEFT 140.00 daN/5cm
↳ After climatic chamber +70°C		WARP 120.00 daN/5cm	WEFT 120.00 daN/5cm

Front - Interior

Natté 380 - perlgrau | weiß-schwarz (007049)

Visual properties

Tv = Visual light transmittance	12.20%
Tuv = UV transmittance	10.30%

Solar energetic properties

As = Solar absorptance	55.60%
Rs = Solar reflectance	30.80%
Ts = Solar transmittance	13.60%

Fabric + glazing: G-factor

	G	Te	Qi	SC
Glazing A	0.55	0.12	0.44	0.65
Glazing B	0.54	0.10	0.45	0.72
Glazing C	0.47	0.07	0.40	0.80
Glazing D	0.28	0.04	0.24	0.88

G = Total solar energy transmittance / Te = Direct solar transmittance / Qi = Secondary heat transfer factor / SC = Shading coefficient

Visual comfort

Normal solar transmittance	Class 3	Good effect
Glare control	Class 1	Little effect
Privacy night	Class 1	Little effect
Visual contact with the outside	Class 3	Good effect
Daylight utilisation	Class 1	Little effect

Thermal comfort G-factor = Total solar energy transmittance

Glazing A	Glazing B	Glazing C	Glazing D
Class 0	Class 0	Class 1	Class 2

Thermal comfort Qi-factor = Secondary heat transfer factor

Glazing A	Glazing B	Glazing C	Glazing D
Class 0	Class 0	Class 0	Class 1

Class 0 = Very little effect / 1 = Little effect / 2 = Moderate effect / 3 = Good effect / 4 = Very good effect

Back - Interior

Natté 380 - perlgrau | weiß-schwarz (007049)

Visual properties

Tv = Visual light transmittance	12.12%
Tuv = UV transmittance	10.30%

Solar energetic properties

As = Solar absorptance	55.60%
Rs = Solar reflectance	30.80%
Ts = Solar transmittance	13.60%

Fabric + glazing: G-factor

	G	Te	Qi	SC
Glazing A	0.55	0.12	0.44	0.65
Glazing B	0.54	0.10	0.45	0.72
Glazing C	0.47	0.07	0.40	0.80
Glazing D	0.28	0.04	0.24	0.88

G = Total solar energy transmittance / Te = Direct solar transmittance / Qi = Secondary heat transfer factor / SC = Shading coefficient

Visual comfort

Normal solar transmittance	Class 3	Good effect
Glare control	Class 1	Little effect
Privacy night	Class 1	Little effect
Visual contact with the outside	Class 3	Good effect
Daylight utilisation	Class 1	Little effect

Thermal comfort G-factor = Total solar energy transmittance

Glazing A	Glazing B	Glazing C	Glazing D
Class 0	Class 0	Class 1	Class 2

Thermal comfort Qi-factor = Secondary heat transfer factor

Glazing A	Glazing B	Glazing C	Glazing D
Class 0	Class 0	Class 0	Class 1

Class 0 = Very little effect / 1 = Little effect / 2 = Moderate effect / 3 = Good effect / 4 = Very good effect