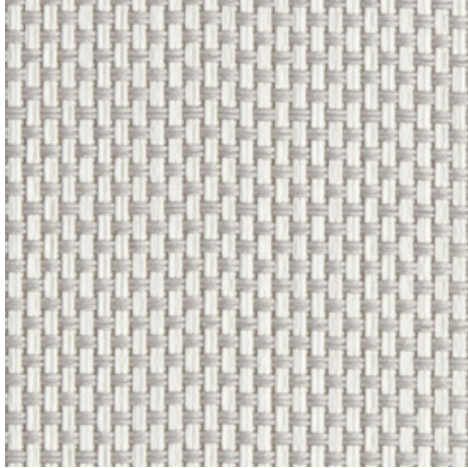
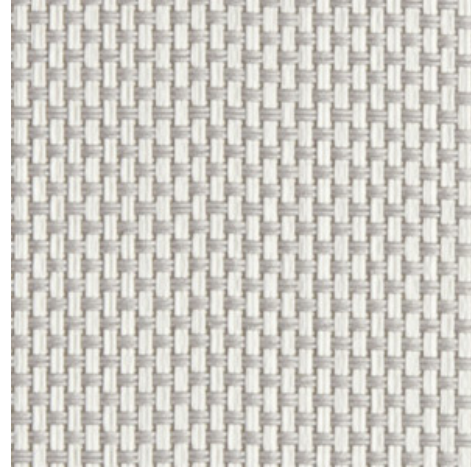


**Natté 380 - blanco | gris perla (002007)**
**Technical info**
**FRONT**

**BACK**


<b>Widths</b>		200 cm   250 cm   320 cm
<b>Composition</b>		Fibra de vidrio 36% - PVC 64%
<b>Openness factor</b>	NBN EN 410	5.00%
<b>Weight</b>	NF EN 12127	385.00 g/m <sup>2</sup>
<b>Thickness</b>	ISO 5084	0.35 mm
<b>Density</b>	ISO 7211/2	WARP 20.00 yarn/cm      WEFT 20.00 yarn/cm
<b>Color fastness to artificial light</b>	ISO 105 B02	>7
<b>Roll length</b>		30 m
<b>Cleaning</b>		Con acqua saponata
<b>Confection</b>		By heat, high frequency or ultrasonic welding
<b>Fire classification</b>		
└ Europe	UNE-EN 13501-1:2007	C-s3, d0
└ France	NF P92-503	M1
└ Italy	UNI 9177	Class 1
└ Germany	DIN 4102	B1
└ UK	BS 5867	C
└ USA	NFPA 701	FR

**Natté 380 - blanco | gris perla (002007)**
**Technical info**

<b>Tear strength</b>	ISO 4674-1 methode 2		
↳ Original		WARP 4.90 daN	WEFT 4.70 daN
↳ After climatic chamber -30°C		WARP 5.10 daN	WEFT 5.15 daN
↳ After climatic chamber +70°C		WARP 5.30 daN	WEFT 4.80 daN
<b>Elongation up to break</b>	ISO 1421		
↳ Original		WARP 3.70 %	WEFT 3.20 %
↳ After color fastness to artificial light		WARP 3.70 %	WEFT 3.00 %
↳ After climatic chamber -30°C		WARP 4.00 %	WEFT 3.00 %
↳ After climatic chamber +70°C		WARP 3.60 %	WEFT 2.90 %
<b>Breaking strength</b>	ISO 1421		
↳ Original		WARP 160.00 daN/5cm	WEFT 160.00 daN/5cm
↳ After color fastness to artificial light		WARP 150.00 daN/5cm	WEFT 160.00 daN/5cm
↳ After climatic chamber -30°C		WARP 150.00 daN/5cm	WEFT 140.00 daN/5cm
↳ After climatic chamber +70°C		WARP 120.00 daN/5cm	WEFT 120.00 daN/5cm

## Front - Interior

Natté 380 - blanco | gris perla (002007)

### Visual properties

<b>Tv = Visual light transmittance</b>	13.60%
<b>Tuv = UV transmittance</b>	8.50%

### Solar energetic properties

<b>As = Solar absorptance</b>	35.20%
<b>Rs = Solar reflectance</b>	48.80%
<b>Ts = Solar transmittance</b>	16.10%

### Fabric + glazing: G-factor

	<b>G</b>	<b>Te</b>	<b>Qi</b>	<b>SC</b>
<b>Glazing A</b>	0.45	0.14	0.31	0.53
<b>Glazing B</b>	0.45	0.12	0.34	0.60
<b>Glazing C</b>	0.41	0.09	0.32	0.70
<b>Glazing D</b>	0.27	0.05	0.21	0.83

G = Total solar energy transmittance / Te = Direct solar transmittance / Qi = Secondary heat transfer factor / SC = Shading coefficient

### Visual comfort

<b>Normal solar transmittance</b>	Class 3	Good effect
<b>Glare control</b>	Class 0	Very little effect
<b>Privacy night</b>	Class 1	Little effect
<b>Visual contact with the outside</b>	Class 3	Good effect
<b>Daylight utilisation</b>	Class 2	Moderate effect

### Thermal comfort G-factor = Total solar energy transmittance

<b>Glazing A</b>	<b>Glazing B</b>	<b>Glazing C</b>	<b>Glazing D</b>
Class 1	Class 1	Class 1	Class 2

### Thermal comfort Qi-factor = Secondary heat transfer factor

<b>Glazing A</b>	<b>Glazing B</b>	<b>Glazing C</b>	<b>Glazing D</b>
Class 0	Class 0	Class 0	Class 1

Class 0 = Very little effect / 1 = Little effect / 2 = Moderate effect / 3 = Good effect / 4 = Very good effect

## Back - Interior

Natté 380 - blanco | gris perla (002007)

### Visual properties

<b>Tv = Visual light transmittance</b>	13.60%
<b>Tuv = UV transmittance</b>	8.50%

### Solar energetic properties

<b>As = Solar absorptance</b>	35.40%
<b>Rs = Solar reflectance</b>	48.50%
<b>Ts = Solar transmittance</b>	16.10%

### Fabric + glazing: G-factor

	<b>G</b>	<b>Te</b>	<b>Qi</b>	<b>SC</b>
<b>Glazing A</b>	0.45	0.14	0.31	0.53
<b>Glazing B</b>	0.46	0.12	0.34	0.60
<b>Glazing C</b>	0.41	0.09	0.32	0.70
<b>Glazing D</b>	0.27	0.05	0.21	0.83

G = Total solar energy transmittance / Te = Direct solar transmittance / Qi = Secondary heat transfer factor / SC = Shading coefficient

### Visual comfort

<b>Normal solar transmittance</b>	Class 3	Good effect
<b>Glare control</b>	Class 0	Very little effect
<b>Privacy night</b>	Class 1	Little effect
<b>Visual contact with the outside</b>	Class 3	Good effect
<b>Daylight utilisation</b>	Class 2	Moderate effect

### Thermal comfort G-factor = Total solar energy transmittance

<b>Glazing A</b>	<b>Glazing B</b>	<b>Glazing C</b>	<b>Glazing D</b>
Class 1	Class 1	Class 1	Class 2

### Thermal comfort Qi-factor = Secondary heat transfer factor

<b>Glazing A</b>	<b>Glazing B</b>	<b>Glazing C</b>	<b>Glazing D</b>
Class 0	Class 0	Class 0	Class 1

Class 0 = Very little effect / 1 = Little effect / 2 = Moderate effect / 3 = Good effect / 4 = Very good effect