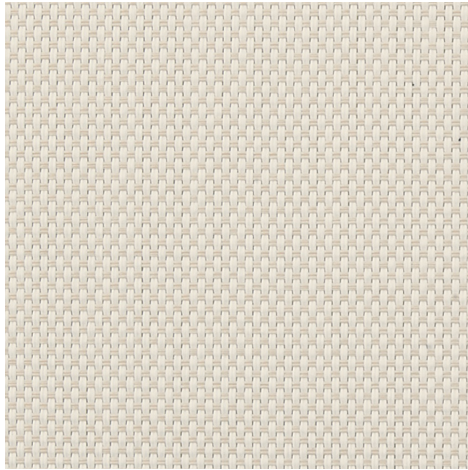
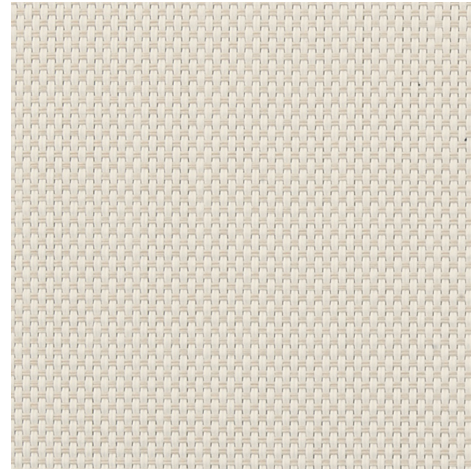


**Natté 300P - white | linen (002008)**
**Technical info**
**FRONT**

**BACK**


|   |                     |   |
|---|---------------------|---|
| <b>Widths</b>                             |                     | 200 cm   320 cm                               |
| <b>Composition</b>                        |                     | 29% Polyester + 71% PVC coated                |
| <b>Openness factor</b>                    | NBN EN 410          | 10.00%  |
| <b>Weight</b>                             | NF EN 12127         | 330.00 g/m <sup>2</sup>                       |
| <b>Thickness</b>                          | ISO 5084            | 0.35 mm                                       |
| <b>Density</b>                            | ISO 7211/2          | WARP 18.00 yarn/cm      WEFT 18.00 yarn/cm    |
| <b>Color fastness to artificial light</b> | ISO 105 B02         | >7  |
| <b>Roll length</b>                        |                     | 30 m  |
| <b>Cleaning</b>                           |                     | With soapy water                              |
| <b>Confection</b>                         |                     | By heat, high frequency or ultrasonic welding |
| <b>Fire classification</b>                |                     |   |
| └ Europe                                  | UNE-EN 13501-1:2007 | B-s2,d0                                       |
| └ France                                  | NF P92-503          | M2  |
| └ Italy                                   | UNI 9177            | Class 1                                       |
| └ Germany                                 | DIN 4102            | B1  |
| └ Spain                                   | UNE 13773           | Clase 1                                       |

| Natté 300P - white   linen (002008) |                     | Technical info      |                     |
|-------------------------------------|---------------------|---------------------|---------------------|
| <b>Tear strength</b>                | ISO 4674-1 method 2 |                     |                     |
| ↳ Original                          |                     | WARP 5.20 daN       | WEFT 4.50 daN       |
| ↳ After climatic chamber -30°C      |                     | WARP 4.80 daN       | WEFT 4.90 daN       |
| ↳ After climatic chamber +70°C      |                     | WARP 4.80 daN       | WEFT 4.90 daN       |
| <b>Elongation up to break</b>       | ISO 1421            |                     |                     |
| ↳ Original                          |                     | WARP 24.50 %        | WEFT 25.60 %        |
| ↳ After ISO 4892-2, 1000 hr.        |                     | WARP 25.00 %        | WEFT 23.70 %        |
| ↳ After climatic chamber -30°C      |                     | WARP 3.10 %         | WEFT 2.70 %         |
| ↳ After climatic chamber +70°C      |                     | WARP 2.70 %         | WEFT 2.70 %         |
| <b>Breaking strength</b>            | ISO 1421            |                     |                     |
| ↳ Original                          |                     | WARP 146.00 daN/5cm | WEFT 129.00 daN/5cm |
| ↳ After ISO 4892-2, 1000 hr.        |                     | WARP 154.00 daN/5cm | WEFT 127.00 daN/5cm |
| ↳ After climatic chamber -30°C      |                     | WARP 135.00 daN/5cm | WEFT 130.00 daN/5cm |
| ↳ After climatic chamber +70°C      |                     | WARP 100.00 daN/5cm | WEFT 120.00 daN/5cm |

**Front - Interior**

Natté 300P - white | linen (002008)

**Visual properties**

|  |        |
|--|--------|
| <b>Tv = Visual light transmittance</b> | 20.80% |
| <b>Tuv = UV transmittance</b>          | 12.10% |

**Solar energetic properties**

|                                 |        |
|---------------------------------|--------|
| <b>As = Solar absorptance</b>   | 20.40% |
| <b>Rs = Solar reflectance</b>   | 54.30% |
| <b>Ts = Solar transmittance</b> | 25.30% |

**Fabric + glazing: G-factor**

|                  | <b>G</b> | <b>Te</b> | <b>Qi</b> | <b>SC</b> |
|------------------|----------|-----------|-----------|-----------|
| <b>Glazing A</b> | 0.00     | 0.22      | 0.20      | 0.49      |
| <b>Glazing B</b> | 0.54     | 0.19      | 0.24      | 0.56      |
| <b>Glazing C</b> | 0.00     | 0.15      | 0.25      | 0.67      |
| <b>Glazing D</b> | 0.00     | 0.09      | 0.17      | 0.81      |

G = Total solar energy transmittance / Te = Direct solar transmittance / Qi = Secondary heat transfer factor / SC = Shading coefficient

**Visual comfort**

|  |         |                    |
|--|---------|--------------------|
| <b>Normal solar transmittance</b>      | Class 4 | Very good effect   |
| <b>Glare control</b>                   | Class 4 | Very good effect   |
| <b>Privacy night</b>                   | Class 2 | Moderate effect    |
| <b>Visual contact with the outside</b> | Class 2 | Moderate effect    |
| <b>Daylight utilisation</b>            | Class 0 | Very little effect |

**Thermal comfort G-factor = Total solar energy transmittance**

| <b>Glazing A</b> | <b>Glazing B</b> | <b>Glazing C</b> | <b>Glazing D</b> |
|------------------|------------------|------------------|------------------|
| Class 1          | Class 1          | Class 1          | Class 2          |

**Thermal comfort Qi-factor = Secondary heat transfer factor**

| <b>Glazing A</b> | <b>Glazing B</b> | <b>Glazing C</b> | <b>Glazing D</b> |
|------------------|------------------|------------------|------------------|
| Class 4          | Class 4          | Class 4          | Class 4          |

Class 0 = Very little effect / 1 = Little effect / 2 = Moderate effect / 3 = Good effect / 4 = Very good effect

**Back - Interior**

Natté 300P - white | linen (002008)

**Visual properties**

|  |        |
|--|--------|
| <b>Tv = Visual light transmittance</b> | 20.80% |
| <b>Tuv = UV transmittance</b>          | 12.10% |

**Solar energetic properties**

|                                 |        |
|---------------------------------|--------|
| <b>As = Solar absorptance</b>   | 20.40% |
| <b>Rs = Solar reflectance</b>   | 54.30% |
| <b>Ts = Solar transmittance</b> | 25.30% |

**Fabric + glazing: G-factor**

|                  | <b>G</b> | <b>Te</b> | <b>Qi</b> | <b>SC</b> |
|------------------|----------|-----------|-----------|-----------|
| <b>Glazing A</b> | 0.00     | 0.22      | 0.20      | 0.49      |
| <b>Glazing B</b> | 0.54     | 0.19      | 0.24      | 0.56      |
| <b>Glazing C</b> | 0.00     | 0.15      | 0.25      | 0.67      |
| <b>Glazing D</b> | 0.00     | 0.09      | 0.17      | 0.81      |

G = Total solar energy transmittance / Te = Direct solar transmittance / Qi = Secondary heat transfer factor / SC = Shading coefficient

**Visual comfort**

|  |         |                    |
|--|---------|--------------------|
| <b>Normal solar transmittance</b>      | Class 4 | Very good effect   |
| <b>Glare control</b>                   | Class 4 | Very good effect   |
| <b>Privacy night</b>                   | Class 2 | Moderate effect    |
| <b>Visual contact with the outside</b> | Class 2 | Moderate effect    |
| <b>Daylight utilisation</b>            | Class 0 | Very little effect |

**Thermal comfort G-factor = Total solar energy transmittance**

| <b>Glazing A</b> | <b>Glazing B</b> | <b>Glazing C</b> | <b>Glazing D</b> |
|------------------|------------------|------------------|------------------|
| Class 1          | Class 1          | Class 1          | Class 2          |

**Thermal comfort Qi-factor = Secondary heat transfer factor**

| <b>Glazing A</b> | <b>Glazing B</b> | <b>Glazing C</b> | <b>Glazing D</b> |
|------------------|------------------|------------------|------------------|
| Class 4          | Class 4          | Class 4          | Class 4          |

Class 0 = Very little effect / 1 = Little effect / 2 = Moderate effect / 3 = Good effect / 4 = Very good effect