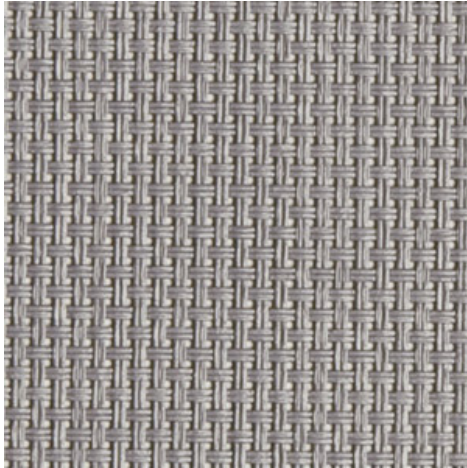


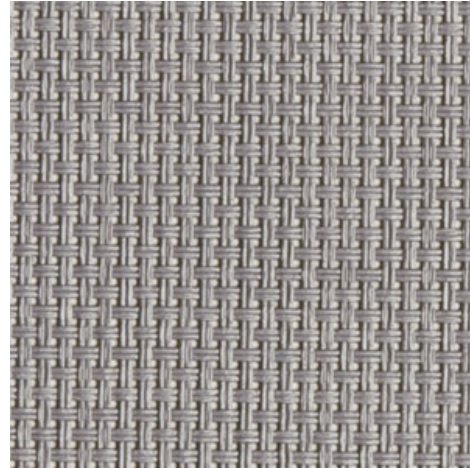
Natté 300 - pearl grey | pearl grey
(007007)

Technical info

FRONT



BACK



Widths		200 cm 250 cm 320 cm
Composition		Fibreglass 36% - PVC 64%
Openness factor	NBN EN 410	10.00%
Weight	NF EN 12127	330.00 g/m ²
Thickness	ISO 5084	0.30 mm
Density	ISO 7211/2	WARP 18.00 yarn/cm WEFT 18.00 yarn/cm
Color fastness to artificial light	ISO 105 B02	>7
Roll length		30 m
Cleaning		With soapy water
Confection		By heat, high frequency or ultrasonic welding
Fire classification		
└ Europe	UNE-EN 13501-1:2007	C-s3,d0
└ France	NF P92-503	M2
└ Italy	UNI 9177	Class 1
└ UK	BS 5867	C
└ USA	NFPA 701	FR

Natté 300 - pearl grey | pearl grey
(007007)

Technical info

Tear strength	ISO 4674-1 methode 2		
↳ Original		WARP 4.70 daN	WEFT 4.90 daN
↳ After climatic chamber -30°C		WARP 4.80 daN	WEFT 4.90 daN
↳ After climatic chamber +70°C		WARP 4.80 daN	WEFT 4.90 daN
Elongation up to break	ISO 1421		
↳ Original		WARP 2.70 %	WEFT 2.70 %
↳ After color fastness to artificial light		WARP 3.10 %	WEFT 3.20 %
↳ After climatic chamber -30°C		WARP 3.10 %	WEFT 2.70 %
↳ After climatic chamber +70°C		WARP 2.70 %	WEFT 2.70 %
Breaking strength	ISO 1421		
↳ Original		WARP 140.00 daN/5cm	WEFT 140.00 daN/5cm
↳ After color fastness to artificial light		WARP 140.00 daN/5cm	WEFT 140.00 daN/5cm
↳ After climatic chamber -30°C		WARP 135.00 daN/5cm	WEFT 130.00 daN/5cm
↳ After climatic chamber +70°C		WARP 100.00 daN/5cm	WEFT 120.00 daN/5cm

Front - Interior

Natté 300 - pearl grey | pearl grey (007007)

Visual properties

Tv = Visual light transmittance	15.40%
Tuv = UV transmittance	13.00%

Solar energetic properties

As = Solar absorptance	48.20%
Rs = Solar reflectance	33.60%
Ts = Solar transmittance	18.20%

Fabric + glazing: G-factor

	G	Te	Qi	SC
Glazing A	0.54	0.16	0.39	0.64
Glazing B	0.53	0.13	0.40	0.70
Glazing C	0.46	0.10	0.36	0.78
Glazing D	0.28	0.06	0.22	0.88

G = Total solar energy transmittance / Te = Direct solar transmittance / Qi = Secondary heat transfer factor / SC = Shading coefficient

Visual comfort

Normal solar transmittance	Class 2	Moderate effect
Glare control	Class 0	Very little effect
Privacy night	Class 0	Very little effect
Visual contact with the outside	Class 4	Very good effect
Daylight utilisation	Class 2	Moderate effect

Thermal comfort G-factor = Total solar energy transmittance

Glazing A	Glazing B	Glazing C	Glazing D
Class 0	Class 0	Class 1	Class 2

Thermal comfort Qi-factor = Secondary heat transfer factor

Glazing A	Glazing B	Glazing C	Glazing D
Class 0	Class 0	Class 0	Class 1

Class 0 = Very little effect / 1 = Little effect / 2 = Moderate effect / 3 = Good effect / 4 = Very good effect

Back - Interior

Natté 300 - pearl grey | pearl grey (007007)

Visual properties

Tv = Visual light transmittance	15.40%
Tuv = UV transmittance	13.00%

Solar energetic properties

As = Solar absorptance	48.40%
Rs = Solar reflectance	33.40%
Ts = Solar transmittance	18.20%

Fabric + glazing: G-factor

	G	Te	Qi	SC
Glazing A	0.54	0.16	0.39	0.64
Glazing B	0.53	0.13	0.40	0.70
Glazing C	0.46	0.10	0.36	0.78
Glazing D	0.28	0.06	0.22	0.88

G = Total solar energy transmittance / Te = Direct solar transmittance / Qi = Secondary heat transfer factor / SC = Shading coefficient

Visual comfort

Normal solar transmittance	Class 2	Moderate effect
Glare control	Class 0	Very little effect
Privacy night	Class 0	Very little effect
Visual contact with the outside	Class 4	Very good effect
Daylight utilisation	Class 2	Moderate effect

Thermal comfort G-factor = Total solar energy transmittance

Glazing A	Glazing B	Glazing C	Glazing D
Class 0	Class 0	Class 1	Class 2

Thermal comfort Qi-factor = Secondary heat transfer factor

Glazing A	Glazing B	Glazing C	Glazing D
Class 0	Class 0	Class 0	Class 1

Class 0 = Very little effect / 1 = Little effect / 2 = Moderate effect / 3 = Good effect / 4 = Very good effect