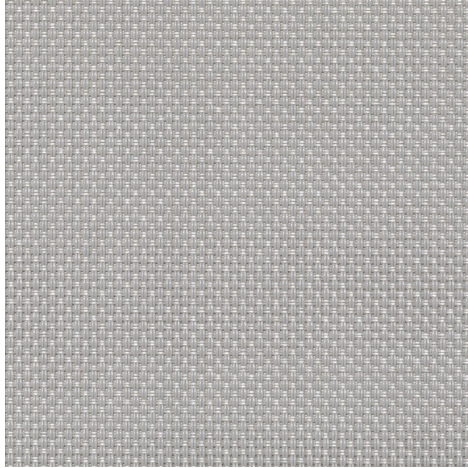
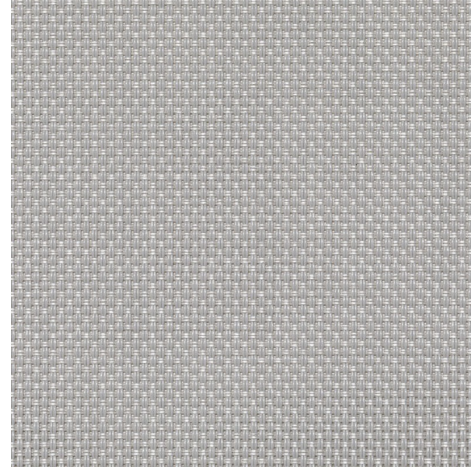


**FRONT**

**BACK**


<b>Widths</b>		300 cm
<b>Composition</b>		Polyester 16% - PVC 84%
<b>Openness factor</b>	NBN EN 14500-B1	5.00%
<b>Weight</b>	NF EN 12127	530.00 g/m <sup>2</sup>
<b>Thickness</b>	ISO 2286-3	0.77 mm
<b>Density</b>	ISO 7211/2	WARP 15.00 yarn/cm      WEFT 15.00 yarn/cm
<b>Color fastness to artificial light</b>	ISO 105 B02	>7
<b>Roll length</b>		30 m
<b>Cleaning</b>		With soapy water
<b>Confection</b>		Confection cut: by heat, high frequency or ultrasonic welding by reinforce tape / Confection welding: cruch cut, ultrasonic, laser
<b>Fire classification</b>		
└ Europe	UNE-EN 13501-1:2007	C-s3, d0
└ France	NF P92-503	M2
└ Spain	UNE EN 13773-2003	Clase 1

Classic - transparent   pearl grey (099007)		Technical info	
<b>Tear strength</b>	ISO 1421		
↳ Original		WARP 9.20 daN	WEFT 5.10 daN
↳ After climatic chamber -30°C		WARP 8.80 daN	WEFT 5.00 daN
↳ After climatic chamber +70°C		WARP 9.10 daN	WEFT 5.50 daN
<b>Elongation up to break</b>	ISO 1421		
↳ Original		WARP 21.33 %	WEFT 32.94 %
↳ After climatic chamber -30°C		WARP 20.26 %	WEFT 31.59 %
↳ After climatic chamber +70°C		WARP 23.27 %	WEFT 33.94 %
<b>Breaking strength</b>	ISO 1421		
↳ Original		WARP 96.60 daN/5cm	WEFT 173.30 daN/5cm
↳ After climatic chamber -30°C		WARP 97.40 daN/5cm	WEFT 173.10 daN/5cm
↳ After climatic chamber +70°C		WARP 94.70 daN/5cm	WEFT 175.20 daN/5cm

**Front - Interior**

Classic - transparent | pearl grey (099007)

**Visual properties**

<b>Tv = Visual light transmittance</b>	18.90%
<b>Tuv = UV transmittance</b>	8.80%

**Solar energetic properties**

<b>As = Solar absorptance</b>	42.90%
<b>Rs = Solar reflectance</b>	35.30%
<b>Ts = Solar transmittance</b>	21.80%

**Fabric + glazing: G-factor**

	<b>G</b>	<b>Te</b>	<b>Qi</b>	<b>SC</b>
<b>Glazing A</b>	0.51	0.19	0.32	0.60
<b>Glazing B</b>	0.51	0.16	0.35	0.67
<b>Glazing C</b>	0.45	0.12	0.33	0.77
<b>Glazing D</b>	0.28	0.07	0.21	0.86

G = Total solar energy transmittance / Te = Direct solar transmittance / Qi = Secondary heat transfer factor / SC = Shading coefficient

**Visual comfort**

<b>Normal solar transmittance</b>	Class 3	Good effect
<b>Glare control</b>	Class 0	Very little effect
<b>Privacy night</b>	Class 1	Little effect
<b>Visual contact with the outside</b>	Class 3	Good effect
<b>Daylight utilisation</b>	Class 2	Moderate effect

**Thermal comfort G-factor = Total solar energy transmittance**

<b>Glazing A</b>	<b>Glazing B</b>	<b>Glazing C</b>	<b>Glazing D</b>
Class 0	Class 0	Class 1	Class 2

**Thermal comfort Qi-factor = Secondary heat transfer factor**

<b>Glazing A</b>	<b>Glazing B</b>	<b>Glazing C</b>	<b>Glazing D</b>
Class 0	Class 0	Class 0	Class 1

Class 0 = Very little effect / 1 = Little effect / 2 = Moderate effect / 3 = Good effect / 4 = Very good effect

**Back - Interior**

Classic - transparent | pearl grey (099007)

**Visual properties**

<b>Tv = Visual light transmittance</b>	18.90%
<b>Tuv = UV transmittance</b>	8.80%

**Solar energetic properties**

<b>As = Solar absorptance</b>	42.80%
<b>Rs = Solar reflectance</b>	35.40%
<b>Ts = Solar transmittance</b>	21.80%

**Fabric + glazing: G-factor**

	<b>G</b>	<b>Te</b>	<b>Qi</b>	<b>SC</b>
<b>Glazing A</b>	0.51	0.19	0.32	0.60
<b>Glazing B</b>	0.51	0.16	0.35	0.67
<b>Glazing C</b>	0.45	0.12	0.33	0.77
<b>Glazing D</b>	0.28	0.07	0.21	0.86

G = Total solar energy transmittance / Te = Direct solar transmittance / Qi = Secondary heat transfer factor / SC = Shading coefficient

**Visual comfort**

<b>Normal solar transmittance</b>	Class 3	Good effect
<b>Glare control</b>	Class 0	Very little effect
<b>Privacy night</b>	Class 1	Little effect
<b>Visual contact with the outside</b>	Class 3	Good effect
<b>Daylight utilisation</b>	Class 2	Moderate effect

**Thermal comfort G-factor = Total solar energy transmittance**

<b>Glazing A</b>	<b>Glazing B</b>	<b>Glazing C</b>	<b>Glazing D</b>
Class 0	Class 0	Class 1	Class 2

**Thermal comfort Qi-factor = Secondary heat transfer factor**

<b>Glazing A</b>	<b>Glazing B</b>	<b>Glazing C</b>	<b>Glazing D</b>
Class 0	Class 0	Class 0	Class 1

Class 0 = Very little effect / 1 = Little effect / 2 = Moderate effect / 3 = Good effect / 4 = Very good effect