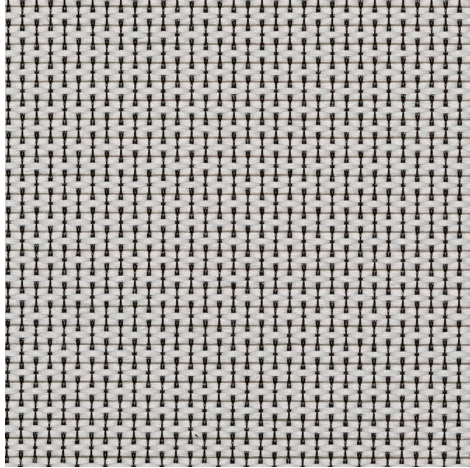
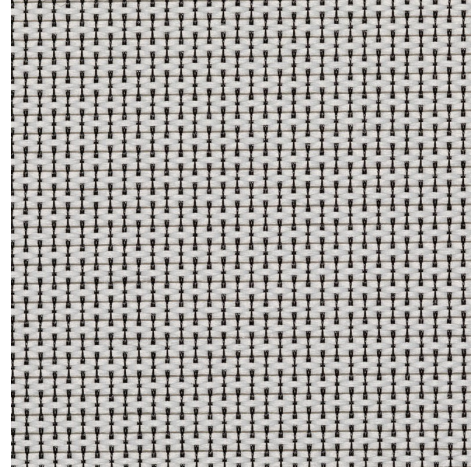


FRONT

BACK


| | | |
|-------------------------------------------|---------------------|--------------------------------------------|
| Widths | | 280 cm |
| Composition | | Polyester 100% |
| Openness factor | NBN EN 14500-B1 | 6.00% |
| Weight | NF EN 12127 | 160.00 g/m ² |
| Thickness | ISO 2286-3 | 0.35 mm |
| Density | ISO 7211/ | WARP 33.00 yarn/cm WEFT 24.00 yarn/cm |
| Color fastness to artificial light | ISO 105 B02 | >6 |
| Roll length | | 40 m |
| Cleaning | | Mit Seifenwasser |
| Fire classification | | |
| └ Europe | UNE-EN 13501-1:2007 | C-s3, d0 |
| └ France | NF P92-503 | M2 |
| └ Germany | DIN 4102 | B1 |
| └ Spain | UNE EN 13773-2003 | Clase 1 |

| Office 180 - weiß schwarz (002010) | | Technical info | |
|--------------------------------------|-------------|--------------------|--------------------|
| Tear strength | ISO 4674-1B | | |
| └ Original | | WARP 2.00 daN | WEFT 0.90 daN |
| └ After climatic chamber -30°C | | WARP 1.70 daN | WEFT 0.90 daN |
| Elongation up to break | ISO 1421 | | |
| └ Original | | WARP 16.80 % | WEFT 14.40 % |
| └ After climatic chamber -30°C | | WARP 18.40 % | WEFT 14.30 % |
| └ After climatic chamber +70°C | | WARP 19.30 % | WEFT 14.60 % |
| Breaking strength | ISO 1421 | | |
| └ Original | | WARP 19.70 daN/5cm | WEFT 87.50 daN/5cm |
| └ After climatic chamber -30°C | | WARP 21.80 daN/5cm | WEFT 89.40 daN/5cm |
| └ After climatic chamber +70°C | | WARP 1.80 daN/5cm | WEFT 0.80 daN/5cm |
| └ After climatic chamber +70°C | | WARP 23.30 daN/5cm | WEFT 86.40 daN/5cm |

Front - Interior

Office 180 - weiß | schwarz (002010)

Visual properties

| | |
|----------------------------------------|--------|
| Tv = Visual light transmittance | 20.80% |
| Tuv = UV transmittance | 19.30% |

Solar energetic properties

| | |
|---------------------------------|--------|
| As = Solar absorptance | 35.70% |
| Rs = Solar reflectance | 42.20% |
| Ts = Solar transmittance | 22.10% |

Fabric + glazing: G-factor

| | G | Te | Qi | SC |
|------------------|----------|-----------|-----------|-----------|
| Glazing A | 0.47 | 0.19 | 0.28 | 0.55 |
| Glazing B | 0.48 | 0.16 | 0.32 | 0.63 |
| Glazing C | 0.43 | 0.12 | 0.31 | 0.73 |
| Glazing D | 0.27 | 0.07 | 0.20 | 0.84 |

G = Total solar energy transmittance / Te = Direct solar transmittance / Qi = Secondary heat transfer factor / SC = Shading coefficient

Visual comfort

| | | |
|----------------------------------------|---------|--------------------|
| Normal solar transmittance | Class 3 | Good effect |
| Glare control | Class 0 | Very little effect |
| Privacy night | Class 1 | Little effect |
| Visual contact with the outside | Class 3 | Good effect |
| Daylight utilisation | Class 2 | Moderate effect |

Thermal comfort G-factor = Total solar energy transmittance

| Glazing A | Glazing B | Glazing C | Glazing D |
|------------------|------------------|------------------|------------------|
| Class 1 | Class 1 | Class 1 | Class 2 |

Thermal comfort Qi-factor = Secondary heat transfer factor

| Glazing A | Glazing B | Glazing C | Glazing D |
|------------------|------------------|------------------|------------------|
| Class 1 | Class 0 | Class 0 | Class 2 |

Class 0 = Very little effect / 1 = Little effect / 2 = Moderate effect / 3 = Good effect / 4 = Very good effect

Back - Interior

Office 180 - weiß | schwarz (002010)

| Visual properties | |
|----------------------------------------|--------|
| Tv = Visual light transmittance | 20.80% |
| Tuv = UV transmittance | 19.30% |

| Solar energetic properties | |
|---------------------------------|--------|
| As = Solar absorptance | 36.00% |
| Rs = Solar reflectance | 41.90% |
| Ts = Solar transmittance | 22.10% |

| Fabric + glazing: G-factor | | | | |
|----------------------------|----------|-----------|-----------|-----------|
| | G | Te | Qi | SC |
| Glazing A | 0.47 | 0.19 | 0.28 | 0.55 |
| Glazing B | 0.48 | 0.16 | 0.32 | 0.63 |
| Glazing C | 0.43 | 0.12 | 0.31 | 0.73 |
| Glazing D | 0.27 | 0.07 | 0.20 | 0.84 |

G = Total solar energy transmittance / Te = Direct solar transmittance / Qi = Secondary heat transfer factor / SC = Shading coefficient

| Visual comfort | | |
|----------------------------------------|---------|--------------------|
| Normal solar transmittance | Class 3 | Good effect |
| Glare control | Class 0 | Very little effect |
| Privacy night | Class 1 | Little effect |
| Visual contact with the outside | Class 3 | Good effect |
| Daylight utilisation | Class 2 | Moderate effect |

| Thermal comfort G-factor = Total solar energy transmittance | | | |
|-------------------------------------------------------------|------------------|------------------|------------------|
| Glazing A | Glazing B | Glazing C | Glazing D |
| Class 1 | Class 1 | Class 1 | Class 2 |

| Thermal comfort Qi-factor = Secondary heat transfer factor | | | |
|------------------------------------------------------------|------------------|------------------|------------------|
| Glazing A | Glazing B | Glazing C | Glazing D |
| Class 1 | Class 0 | Class 0 | Class 2 |

Class 0 = Very little effect / 1 = Little effect / 2 = Moderate effect / 3 = Good effect / 4 = Very good effect