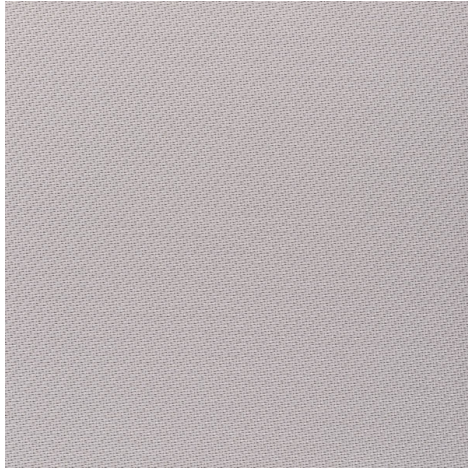


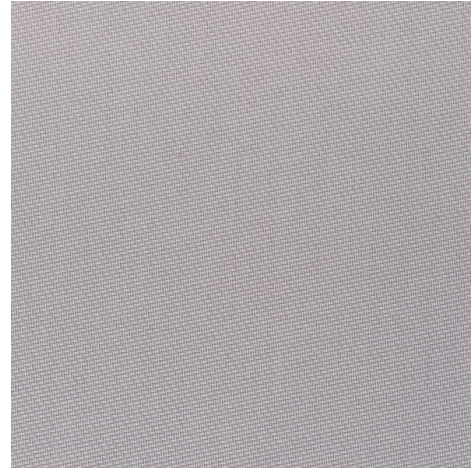
**Serge 600 Blockout Solar - pearl grey |
pearl grey (007007)**

Technical info

FRONT



BACK



Widths		300 cm
Composition		Fibreglass 34% - PVC 48% - PVC laminate 18%
Openness factor	NBN EN 410	3.00%
Weight	NF EN 12127	645.00 g/m ²
Thickness	ISO 5084	0.70 mm
Density	ISO 7211/2	WARP 18.00 yarn/cm WEFT 14.00 yarn/cm
Color fastness to artificial weathering	ISO 105 B04	>7
Air permeability	ISO 9237	0
Roll length		30 m
Cleaning		With soapy water
Confection		By heat, high frequency or ultrasonic welding
Fire classification		
└ Germany	DIN 4102	awaiting test results
└ UK	BS 5867	awaiting test results
└ USA	NFPA 701	awaiting test results
└ France	NF P92-503	M2
└ Italy	UNI 9177	Class 1

**Serge 600 Blockout Solar - pearl grey |
pearl grey (007007)**

Technical info

Tear strength	ISO 4674-1 methode 2		
↳ Original		WARP 9.00 daN	WEFT 9.90 daN
↳ After climatic chamber -30°C		WARP 10.00 daN	WEFT 11.00 daN
↳ After climatic chamber +70°C		WARP 9.80 daN	WEFT 10.00 daN
Elongation up to break	ISO 1421		
↳ Original		WARP 5.70 %	WEFT 7.90 %
↳ After colour fastness to artificial weathering		WARP 5.90 %	WEFT 6.70 %
↳ After climatic chamber -30°C		WARP 5.50 %	WEFT 6.40 %
↳ After climatic chamber +70°C		WARP 5.90 %	WEFT 6.20 %
Breaking strength	ISO 1421		
↳ Original		WARP 205.70 daN/5cm	WEFT 169.80 daN/5cm
↳ After colour fastness to artificial weathering		WARP 200.10 daN/5cm	WEFT 154.60 daN/5cm
↳ After climatic chamber -30°C		WARP 210.00 daN/5cm	WEFT 210.00 daN/5cm
↳ After climatic chamber +70°C		WARP 215.30 daN/5cm	WEFT 147.20 daN/5cm
Recommendations		To be used in sunscreensystems with Zipscreens.	

Front - Interior

Serge 600 Blockout Solar - pearl grey | pearl grey (007007)

Visual properties

Tv = Visual light transmittance	0.20%
Tuv = UV transmittance	4.80%

Solar energetic properties

As = Solar absorptance	60.30%
Rs = Solar reflectance	35.10%
Ts = Solar transmittance	4.60%

Fabric + glazing: G-factor

	G	Te	Qi	SC
Glazing A	0.47	0.04	0.43	0.55
Glazing B	0.49	0.03	0.46	0.65
Glazing C	0.45	0.02	0.42	0.75
Glazing D	0.27	0.01	0.26	0.85

G = Total solar energy transmittance / Te = Direct solar transmittance / Qi = Secondary heat transfer factor / SC = Shading coefficient

Visual comfort

Normal solar transmittance	Class 4	Very good effect
Glare control	Class 2	Moderate effect
Privacy night	Class 2	Moderate effect
Visual contact with the outside	Class 2	Moderate effect
Daylight utilisation	Class 1	Little effect

Thermal comfort G-factor = Total solar energy transmittance

Glazing A	Glazing B	Glazing C	Glazing D
Class 1	Class 1	Class 1	Class 2

Thermal comfort Qi-factor = Secondary heat transfer factor

Glazing A	Glazing B	Glazing C	Glazing D
Class 0	Class 0	Class 0	Class 1

Class 0 = Very little effect / 1 = Little effect / 2 = Moderate effect / 3 = Good effect / 4 = Very good effect

Back - Interior

Serge 600 Blockout Solar - pearl grey | pearl grey (007007)

Visual properties

Tv = Visual light transmittance	0.20%
Tuv = UV transmittance	4.80%

Solar energetic properties

As = Solar absorptance	59.60%
Rs = Solar reflectance	35.80%
Ts = Solar transmittance	4.60%

Fabric + glazing: G-factor

	G	Te	Qi	SC
Glazing A	0.47	0.04	0.43	0.55
Glazing B	0.49	0.03	0.46	0.65
Glazing C	0.44	0.02	0.42	0.75
Glazing D	0.27	0.01	0.26	0.85

G = Total solar energy transmittance / Te = Direct solar transmittance / Qi = Secondary heat transfer factor / SC = Shading coefficient

Visual comfort

Normal solar transmittance	Class 4	Very good effect
Glare control	Class 2	Moderate effect
Privacy night	Class 2	Moderate effect
Visual contact with the outside	Class 2	Moderate effect
Daylight utilisation	Class 1	Little effect

Thermal comfort G-factor = Total solar energy transmittance

Glazing A	Glazing B	Glazing C	Glazing D
Class 1	Class 1	Class 1	Class 2

Thermal comfort Qi-factor = Secondary heat transfer factor

Glazing A	Glazing B	Glazing C	Glazing D
Class 0	Class 0	Class 0	Class 1

Class 0 = Very little effect / 1 = Little effect / 2 = Moderate effect / 3 = Good effect / 4 = Very good effect

Front - Exterior

Serge 600 Blockout Solar - pearl grey | pearl grey (007007)

Visual properties

Tv = Visual light transmittance	0.20%
Tuv = UV transmittance	4.80%

Solar energetic properties

As = Solar absorptance	60.30%
Rs = Solar reflectance	35.10%
Ts = Solar transmittance	4.60%

Fabric + glazing: G-factor

	G	Te	Qi	SC
Glazing A	0.13	0.04	0.09	0.15
Glazing B	0.10	0.03	0.06	0.13
Glazing C	0.06	0.03	0.04	0.10
Glazing D	0.05	0.01	0.04	0.15

G = Total solar energy transmittance / Te = Direct solar transmittance / Qi = Secondary heat transfer factor / SC = Shading coefficient

Visual comfort

Normal solar transmittance	Class 4	Very good effect
Glare control	Class 2	Moderate effect
Privacy night	Class 2	Moderate effect
Visual contact with the outside	Class 2	Moderate effect
Daylight utilisation	Class 1	Little effect

Thermal comfort G-factor = Total solar energy transmittance

Glazing A	Glazing B	Glazing C	Glazing D
Class 3	Class 4	Class 4	Class 4

Thermal comfort Qi-factor = Secondary heat transfer factor

Glazing A	Glazing B	Glazing C	Glazing D
Class 3	Class 3	Class 3	Class 3

Class 0 = Very little effect / 1 = Little effect / 2 = Moderate effect / 3 = Good effect / 4 = Very good effect

Back - Exterior

Serge 600 Blockout Solar - pearl grey | pearl grey (007007)

Visual properties

Tv = Visual light transmittance	0.20%
Tuv = UV transmittance	4.80%

Solar energetic properties

As = Solar absorptance	59.60%
Rs = Solar reflectance	35.80%
Ts = Solar transmittance	4.60%

Fabric + glazing: G-factor

	G	Te	Qi	SC
Glazing A	0.13	0.04	0.09	0.15
Glazing B	0.10	0.03	0.06	0.13
Glazing C	0.06	0.03	0.04	0.10
Glazing D	0.05	0.01	0.03	0.15

G = Total solar energy transmittance / Te = Direct solar transmittance / Qi = Secondary heat transfer factor / SC = Shading coefficient

Visual comfort

Normal solar transmittance	Class 4	Very good effect
Glare control	Class 2	Moderate effect
Privacy night	Class 2	Moderate effect
Visual contact with the outside	Class 2	Moderate effect
Daylight utilisation	Class 1	Little effect

Thermal comfort G-factor = Total solar energy transmittance

Glazing A	Glazing B	Glazing C	Glazing D
Class 3	Class 4	Class 4	Class 4

Thermal comfort Qi-factor = Secondary heat transfer factor

Glazing A	Glazing B	Glazing C	Glazing D
Class 3	Class 3	Class 3	Class 3

Class 0 = Very little effect / 1 = Little effect / 2 = Moderate effect / 3 = Good effect / 4 = Very good effect