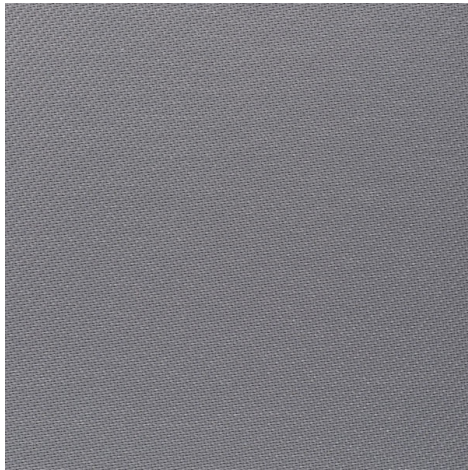


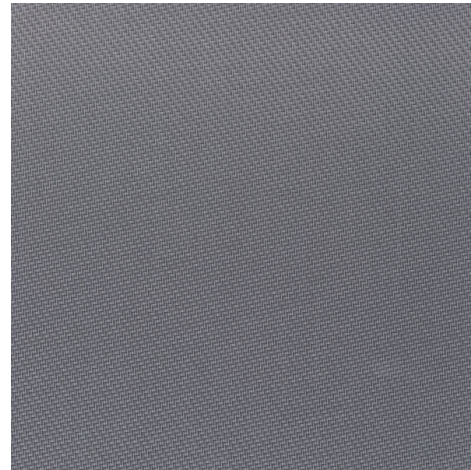
Serge 600 Blockout Solar - grau | grau
(001001)

Technical info

FRONT



BACK



Widths		300 cm
Composition		Glasfaser 42% - PVC 58%
Openness factor	NBN EN 410	3.00%
Weight	NF EN 12127	645.00 g/m ²
Thickness	ISO 5084	0.70 mm
Density	ISO 7211/2	WARP 18.00 yarn/cm WEFT 14.00 yarn/cm
Color fastness to artificial weathering	ISO 105 B04	>7
Air permeability	ISO 9237	0
Roll length		30 m
Cleaning		Mit Seifenwasser
Confection		By heat, high frequency or ultrasonic welding
Fire classification		
└ Germany	DIN 4102	awaiting test results
└ UK	BS 5867	awaiting test results
└ USA	NFPA 701	awaiting test results
└ France	NF P92-503	M2
└ Italy	UNI 9177	Class 1

Serge 600 Blockout Solar - grau | grau
(001001)

Technical info

Tear strength	ISO 4674-1 methode 2		
↳ Original		WARP 9.00 daN	WEFT 9.90 daN
↳ After climatic chamber -30°C		WARP 10.00 daN	WEFT 11.00 daN
↳ After climatic chamber +70°C		WARP 9.80 daN	WEFT 10.00 daN
Elongation up to break	ISO 1421		
↳ Original		WARP 5.70 %	WEFT 7.90 %
↳ After colour fastness to artificial weathering		WARP 5.90 %	WEFT 6.70 %
↳ After climatic chamber -30°C		WARP 5.50 %	WEFT 6.40 %
↳ After climatic chamber +70°C		WARP 5.90 %	WEFT 6.20 %
Breaking strength	ISO 1421		
↳ Original		WARP 205.70 daN/5cm	WEFT 169.80 daN/5cm
↳ After colour fastness to artificial weathering		WARP 200.10 daN/5cm	WEFT 154.60 daN/5cm
↳ After climatic chamber -30°C		WARP 210.00 daN/5cm	WEFT 210.00 daN/5cm
↳ After climatic chamber +70°C		WARP 215.30 daN/5cm	WEFT 147.20 daN/5cm
Empfehlungen		Zur Verwendung in Sonnenschutzsystemen mit Zipscreens.	

Front - Interior Serge 600 Blockout Solar - grau | grau (001001)

Visual properties	
Tv = Visual light transmittance	0.20%
Tuv = UV transmittance	4.80%

Solar energetic properties	
As = Solar absorptance	77.90%
Rs = Solar reflectance	17.30%
Ts = Solar transmittance	4.80%

Fabric + glazing: G-factor				
	G	Te	Qi	SC
Glazing A	0.56	0.04	0.52	0.66
Glazing B	0.58	0.03	0.54	0.76
Glazing C	0.50	0.02	0.48	0.85
Glazing D	0.29	0.01	0.27	0.90

G = Total solar energy transmittance / Te = Direct solar transmittance / Qi = Secondary heat transfer factor / SC = Shading coefficient

Visual comfort		
Normal solar transmittance	Class 4	Very good effect
Glare control	Class 2	Moderate effect
Privacy night	Class 2	Moderate effect
Visual contact with the outside	Class 2	Moderate effect
Daylight utilisation	Class 1	Little effect

Thermal comfort G-factor = Total solar energy transmittance			
Glazing A	Glazing B	Glazing C	Glazing D
Class 0	Class 0	Class 0	Class 2

Thermal comfort Qi-factor = Secondary heat transfer factor			
Glazing A	Glazing B	Glazing C	Glazing D
Class 0	Class 0	Class 0	Class 1

Class 0 = Very little effect / 1 = Little effect / 2 = Moderate effect / 3 = Good effect / 4 = Very good effect

Back - Interior Serge 600 Blockout Solar - grau | grau (001001)

Visual properties	
Tv = Visual light transmittance	0.20%
Tuv = UV transmittance	4.80%

Solar energetic properties	
As = Solar absorptance	74.80%
Rs = Solar reflectance	20.40%
Ts = Solar transmittance	4.80%

Fabric + glazing: G-factor				
	G	Te	Qi	SC
Glazing A	0.55	0.04	0.51	0.64
Glazing B	0.56	0.03	0.53	0.74
Glazing C	0.49	0.02	0.47	0.83
Glazing D	0.29	0.01	0.27	0.89

G = Total solar energy transmittance / Te = Direct solar transmittance / Qi = Secondary heat transfer factor / SC = Shading coefficient

Visual comfort		
Normal solar transmittance	Class 4	Very good effect
Glare control	Class 2	Moderate effect
Privacy night	Class 2	Moderate effect
Visual contact with the outside	Class 2	Moderate effect
Daylight utilisation	Class 1	Little effect

Thermal comfort G-factor = Total solar energy transmittance			
Glazing A	Glazing B	Glazing C	Glazing D
Class 0	Class 0	Class 1	Class 2

Thermal comfort Qi-factor = Secondary heat transfer factor			
Glazing A	Glazing B	Glazing C	Glazing D
Class 0	Class 0	Class 0	Class 1

Class 0 = Very little effect / 1 = Little effect / 2 = Moderate effect / 3 = Good effect / 4 = Very good effect

Front - Exterior Serge 600 Blockout Solar - grau | grau (001001)

Visual properties	
Tv = Visual light transmittance	0.20%
Tuv = UV transmittance	4.80%

Solar energetic properties	
As = Solar absorptance	77.90%
Rs = Solar reflectance	17.30%
Ts = Solar transmittance	4.80%

Fabric + glazing: G-factor				
	G	Te	Qi	SC
Glazing A	0.15	0.04	0.11	0.18
Glazing B	0.12	0.03	0.08	0.15
Glazing C	0.12	0.02	0.05	0.12
Glazing D	0.06	0.01	0.04	0.18

G = Total solar energy transmittance / Te = Direct solar transmittance / Qi = Secondary heat transfer factor / SC = Shading coefficient

Visual comfort		
Normal solar transmittance	Class 4	Very good effect
Glare control	Class 2	Moderate effect
Privacy night	Class 2	Moderate effect
Visual contact with the outside	Class 2	Moderate effect
Daylight utilisation	Class 1	Little effect

Thermal comfort G-factor = Total solar energy transmittance			
Glazing A	Glazing B	Glazing C	Glazing D
Class 2	Class 3	Class 4	Class 4

Thermal comfort Qi-factor = Secondary heat transfer factor			
Glazing A	Glazing B	Glazing C	Glazing D
Class 2	Class 3	Class 3	Class 3

Class 0 = Very little effect / 1 = Little effect / 2 = Moderate effect / 3 = Good effect / 4 = Very good effect

Back - Exterior Serge 600 Blockout Solar - grau | grau (001001)

Visual properties	
Tv = Visual light transmittance	0.20%
Tuv = UV transmittance	4.80%

Solar energetic properties	
As = Solar absorptance	74.80%
Rs = Solar reflectance	20.40%
Ts = Solar transmittance	4.80%

Fabric + glazing: G-factor				
	G	Te	Qi	SC
Glazing A	0.15	0.04	0.11	0.18
Glazing B	0.11	0.03	0.08	0.18
Glazing C	0.07	0.02	0.05	0.12
Glazing D	0.06	0.01	0.04	0.18

G = Total solar energy transmittance / Te = Direct solar transmittance / Qi = Secondary heat transfer factor / SC = Shading coefficient

Visual comfort		
Normal solar transmittance	Class 4	Very good effect
Glare control	Class 2	Moderate effect
Privacy night	Class 2	Moderate effect
Visual contact with the outside	Class 2	Moderate effect
Daylight utilisation	Class 1	Little effect

Thermal comfort G-factor = Total solar energy transmittance			
Glazing A	Glazing B	Glazing C	Glazing D
Class 3	Class 3	Class 4	Class 4

Thermal comfort Qi-factor = Secondary heat transfer factor			
Glazing A	Glazing B	Glazing C	Glazing D
Class 2	Class 3	Class 3	Class 3

Class 0 = Very little effect / 1 = Little effect / 2 = Moderate effect / 3 = Good effect / 4 = Very good effect