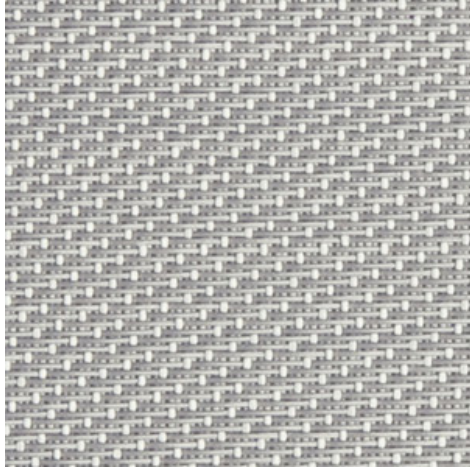


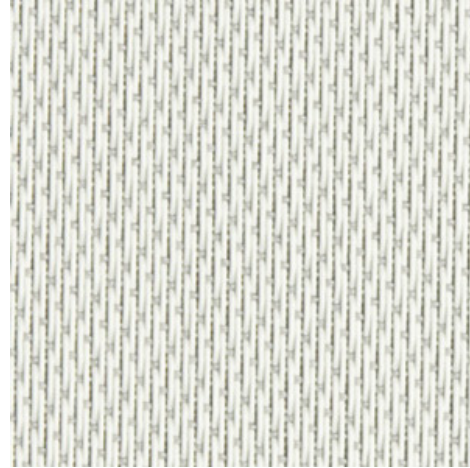
Ecrano - weiß | perlgrau (002007)

Technical info

FRONT



BACK



Widths		270 cm
Composition		Glasfaser 42% - PVC 58%
Openness factor	NBN EN 410	2.00%
Weight	NF EN 12127	650.00 g/m ²
Thickness	ISO 5084	0.90 mm
Density	ISO 7211/2	WARP 18.00 yarn/cm WEFT 21.00 yarn/cm
Color fastness to artificial light	ISO 105 B02	>7
Color fastness to artificial weathering	ISO 105 B04	>7
Air permeability	ISO 9237	1 930.00l/m ² /s
Roll length		30 m
Cleaning		Mit Seifenwasser
Confection		By heat, high frequency or ultrasonic welding
Fire classification		
└ Europe	UNE-EN 13501-1:2007	C-s3, d0
└ France	NF P92-503	M1
└ Italy	UNI 9177	Class 1
└ Germany	DIN 4102	B1
└ UK	BS 5867	C
└ USA	NFPA 701	FR

Ecrano - weiß perlgrau (002007)		Technical info	
Tear strength	ISO 4674-1 methode 2		
↳ Original		WARP 6.90 daN	WEFT 6.50 daN
↳ After climatic chamber -30°C		WARP 6.60 daN	WEFT 6.80 daN
↳ After climatic chamber +70°C		WARP 6.50 daN	WEFT 6.50 daN
Elongation up to break	ISO 1421		
↳ Original		WARP 4.10 %	WEFT 4.00 %
↳ After colour fastness to artificial weathering		WARP 4.00 %	WEFT 3.60 %
↳ After climatic chamber -30°C		WARP 4.20 %	WEFT 4.20 %
↳ After climatic chamber +70°C		WARP 4.40 %	WEFT 4.30 %
Breaking strength	ISO 1421		
↳ Original		WARP 360.00 daN/5cm	WEFT 300.00 daN/5cm
↳ After colour fastness to artificial weathering		WARP 330.00 daN/5cm	WEFT 250.00 daN/5cm
↳ After climatic chamber -30°C		WARP 355.00 daN/5cm	WEFT 318.00 daN/5cm
↳ After climatic chamber +70°C		WARP 355.00 daN/5cm	WEFT 310.00 daN/5cm

Front - Interior

Ecrano - weiß | perlgrau (002007)

Visual properties

Tv = Visual light transmittance	6.30%
Tuv = UV transmittance	3.00%

Solar energetic properties

As = Solar absorptance	58.20%
Rs = Solar reflectance	34.90%
Ts = Solar transmittance	6.90%

Fabric + glazing: G-factor

	G	Te	Qi	SC
Glazing A	0.48	0.06	0.42	0.56
Glazing B	0.50	0.05	0.45	0.65
Glazing C	0.45	0.04	0.41	0.76
Glazing D	0.27	0.02	0.25	0.85

G = Total solar energy transmittance / Te = Direct solar transmittance / Qi = Secondary heat transfer factor / SC = Shading coefficient

Visual comfort

Normal solar transmittance	Class 4	Very good effect
Glare control	Class 2	Moderate effect
Privacy night	Class 2	Moderate effect
Visual contact with the outside	Class 2	Moderate effect
Daylight utilisation	Class 1	Little effect

Thermal comfort G-factor = Total solar energy transmittance

Glazing A	Glazing B	Glazing C	Glazing D
Class 1	Class 1	Class 1	Class 2

Thermal comfort Qi-factor = Secondary heat transfer factor

Glazing A	Glazing B	Glazing C	Glazing D
Class 0	Class 0	Class 0	Class 1

Class 0 = Very little effect / 1 = Little effect / 2 = Moderate effect / 3 = Good effect / 4 = Very good effect

Back - Interior

Ecrano - weiß | perlgrau (002007)

Visual properties

Tv = Visual light transmittance	6.30%
Tuv = UV transmittance	3.00%

Solar energetic properties

As = Solar absorptance	36.30%
Rs = Solar reflectance	56.80%
Ts = Solar transmittance	6.90%

Fabric + glazing: G-factor

	G	Te	Qi	SC
Glazing A	0.36	0.06	0.30	0.43
Glazing B	0.39	0.05	0.34	0.52
Glazing C	0.38	0.04	0.34	0.64
Glazing D	0.26	0.02	0.23	0.80

G = Total solar energy transmittance / Te = Direct solar transmittance / Qi = Secondary heat transfer factor / SC = Shading coefficient

Visual comfort

Normal solar transmittance	Class 4	Very good effect
Glare control	Class 2	Moderate effect
Privacy night	Class 2	Moderate effect
Visual contact with the outside	Class 2	Moderate effect
Daylight utilisation	Class 1	Little effect

Thermal comfort G-factor = Total solar energy transmittance

Glazing A	Glazing B	Glazing C	Glazing D
Class 1	Class 1	Class 1	Class 2

Thermal comfort Qi-factor = Secondary heat transfer factor

Glazing A	Glazing B	Glazing C	Glazing D
Class 0	Class 0	Class 0	Class 1

Class 0 = Very little effect / 1 = Little effect / 2 = Moderate effect / 3 = Good effect / 4 = Very good effect

Front - Exterior	Ecrano - weiß perlgrau (002007)
-------------------------	--

Visual properties	
Tv = Visual light transmittance	6.30%
Tuv = UV transmittance	3.00%

Solar energetic properties	
As = Solar absorptance	58.20%
Rs = Solar reflectance	34.90%
Ts = Solar transmittance	6.90%

Fabric + glazing: G-factor				
	G	Te	Qi	SC
Glazing A	0.14	0.06	0.08	0.17
Glazing B	0.11	0.05	0.06	0.15
Glazing C	0.08	0.04	0.04	0.13
Glazing D	0.06	0.02	0.04	0.18

G = Total solar energy transmittance / Te = Direct solar transmittance / Qi = Secondary heat transfer factor / SC = Shading coefficient

Thermal comfort G-factor = Total solar energy transmittance			
Glazing A	Glazing B	Glazing C	Glazing D
Class 3	Class 3	Class 4	Class 4

Thermal comfort Qi-factor = Secondary heat transfer factor			
Glazing A	Glazing B	Glazing C	Glazing D
Class 3	Class 3	Class 3	Class 3

Class 0 = Very little effect / 1 = Little effect / 2 = Moderate effect / 3 = Good effect / 4 = Very good effect

Back - Exterior

Ecran - weiß | perlgrau (002007)

Visual properties

Tv = Visual light transmittance	6.30%
Tuv = UV transmittance	3.00%

Solar energetic properties

As = Solar absorptance	36.30%
Rs = Solar reflectance	56.80%
Ts = Solar transmittance	6.90%

Fabric + glazing: G-factor

	G	Te	Qi	SC
Glazing A	0.11	0.06	0.06	0.13
Glazing B	0.09	0.05	0.04	0.12
Glazing C	0.06	0.04	0.03	0.11
Glazing D	0.05	0.02	0.03	0.15

G = Total solar energy transmittance / Te = Direct solar transmittance / Qi = Secondary heat transfer factor / SC = Shading coefficient

Thermal comfort G-factor = Total solar energy transmittance

Glazing A	Glazing B	Glazing C	Glazing D
Class 3	Class 3	Class 4	Class 4

Thermal comfort Qi-factor = Secondary heat transfer factor

Glazing A	Glazing B	Glazing C	Glazing D
Class 3	Class 3	Class 4	Class 4

Class 0 = Very little effect / 1 = Little effect / 2 = Moderate effect / 3 = Good effect / 4 = Very good effect