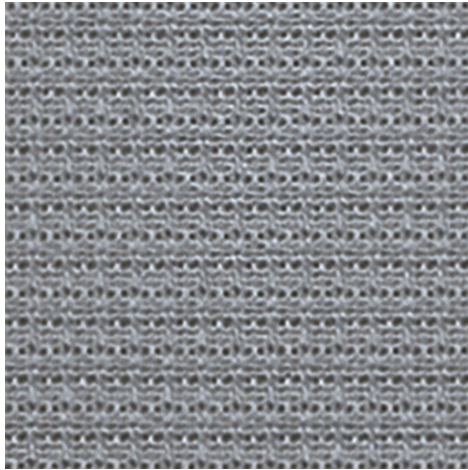
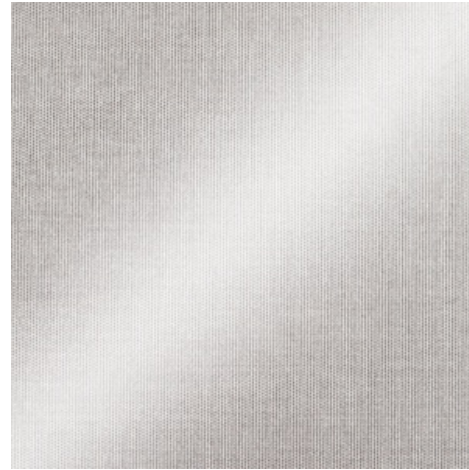


Zilario 3% - slate (086086)

Technical info

FRONT

BACK


Widths		240 cm
Composition		100% Recycled PET bottles
Openness factor	NBN EN 410	3.00%
Weight	NF EN 12127	226.00 g/m ²
Thickness	ISO 5084	0.46 mm
Density	ISO 7211/2	WARP 21.00 yarn/cm WEFT 18.00 yarn/cm
Color fastness to artificial light	ISO 105 B02	>7
Roll length		30 m
Cleaning		With soapy water
Confection		By heat or ultrasonic welding with an extra hot glue tape
Fire classification		
└ Europe	UNE-EN 13501-1:2007	C-s3, d0
└ France	NF P92-503	M1
└ Italy	UNI 9177	
└ Germany	DIN 4102	B1
└ UK	BS 5867	
└ USA	NFPA 701	

Zilario 3% - slate (086086)		Technical info	
Tear strength	ISO 4674-1 methode 2		
└ Original		WARP 5.20 daN	WEFT 6.80 daN
└ After climatic chamber -30°C		WARP 5.00 daN	WEFT 6.20 daN
└ After climatic chamber +70°C		WARP 5.20 daN	WEFT 6.70 daN
Elongation up to break	ISO 1421		
└ Original		WARP 36.00 %	WEFT 33.50 %
Breaking strength	ISO 1421		
└ Original		WARP 160.00 daN/5cm	WEFT 135.00 daN/5cm

Front - Interior	Zilario 3% - slate (086086)
-------------------------	-----------------------------

Visual properties	
Tv = Visual light transmittance	4.00%
Tuv = UV transmittance	4.10%

Solar energetic properties	
As = Solar absorptance	56.10%
Rs = Solar reflectance	36.90%
Ts = Solar transmittance	7.00%

Fabric + glazing: G-factor				
	G	Te	Qi	SC
Glazing A	0.51	0.00	0.00	0.60
Glazing B	0.51	0.00	0.00	0.67
Glazing C	0.45	0.00	0.00	0.76
Glazing D	0.28	0.00	0.00	0.86

G = Total solar energy transmittance / Te = Direct solar transmittance / Qi = Secondary heat transfer factor / SC = Shading coefficient

Visual comfort		
Normal solar transmittance	Class 4	Very good effect
Glare control	Class 3	Good effect
Privacy night	Class 2	Moderate effect
Visual contact with the outside	Class 2	Moderate effect
Daylight utilisation	Class 1	Little effect

Back - Interior	Zilario 3% - slate (086086)
------------------------	-----------------------------

Visual properties	
Tv = Visual light transmittance	4.00%
Tuv = UV transmittance	4.10%

Solar energetic properties	
As = Solar absorptance	36.10%
Rs = Solar reflectance	56.90%
Ts = Solar transmittance	7.00%

Fabric + glazing: G-factor				
	G	Te	Qi	SC
Glazing A	0.29	0.00	0.00	0.34
Glazing B	0.35	0.00	0.00	0.46
Glazing C	0.34	0.00	0.00	0.58
Glazing D	0.19	0.00	0.00	0.59

G = Total solar energy transmittance / Te = Direct solar transmittance / Qi = Secondary heat transfer factor / SC = Shading coefficient

Visual comfort		
Normal solar transmittance	Class 4	Very good effect
Glare control	Class 3	Good effect
Privacy night	Class 2	Moderate effect
Visual contact with the outside	Class 2	Moderate effect
Daylight utilisation	Class 1	Little effect