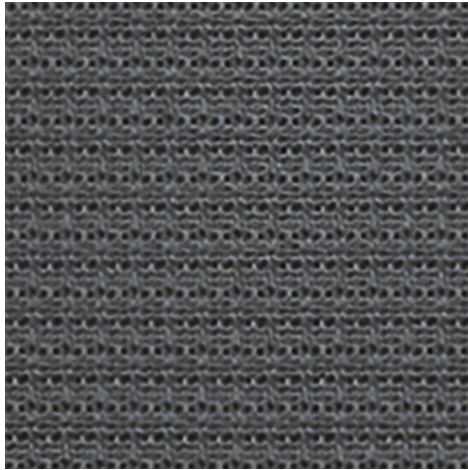
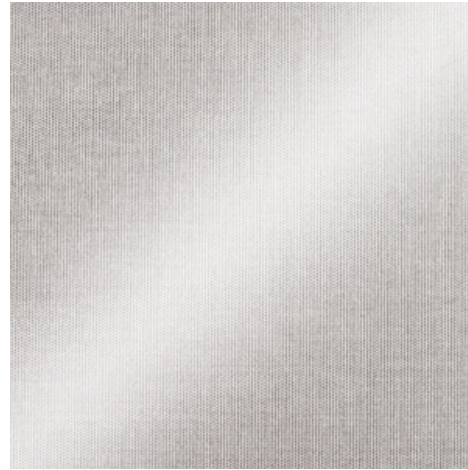


**Zilario 3% - plum slate (087087)**

## Technical info

**FRONT**

**BACK**


<b>Widths</b>		240 cm
<b>Composition</b>		100% Recycled PET bottles
<b>Openness factor</b>	NBN EN 410	3.00%
<b>Weight</b>	NF EN 12127	226.00 g/m <sup>2</sup>
<b>Thickness</b>	ISO 5084	0.46 mm
<b>Density</b>	ISO 7211/2	WARP 21.00 yarn/cm      WEFT 18.00 yarn/cm
<b>Color fastness to artificial light</b>	ISO 105 B02	>7
<b>Roll length</b>		30 m
<b>Cleaning</b>		With soapy water
<b>Confection</b>		By heat or ultrasonic welding with an extra hot glue tape
<b>Fire classification</b>		
└ Europe	UNE-EN 13501-1:2007	C-s3, d0
└ France	NF P92-503	M1
└ Italy	UNI 9177	
└ Germany	DIN 4102	B1
└ UK	BS 5867	
└ USA	NFPA 701	

Zilario 3% - plum slate (087087)		Technical info	
<b>Tear strength</b>	ISO 4674-1 methode 2		
└ Original		WARP 5.20 daN	WEFT 6.80 daN
└ After climatic chamber -30°C		WARP 5.00 daN	WEFT 6.20 daN
└ After climatic chamber +70°C		WARP 5.20 daN	WEFT 6.70 daN
<b>Elongation up to break</b>	ISO 1421		
└ Original		WARP 36.00 %	WEFT 33.50 %
<b>Breaking strength</b>	ISO 1421		
└ Original		WARP 160.00 daN/5cm	WEFT 135.00 daN/5cm

**Front - Interior**

Zilario 3% - plum slate (087087)

**Visual properties**

<b>Tv = Visual light transmittance</b>	2.90%
<b>Tuv = UV transmittance</b>	2.90%

**Solar energetic properties**

<b>As = Solar absorptance</b>	63.00%
<b>Rs = Solar reflectance</b>	31.10%
<b>Ts = Solar transmittance</b>	5.90%

**Fabric + glazing: G-factor**

	<b>G</b>	<b>Te</b>	<b>Qi</b>	<b>SC</b>
<b>Glazing A</b>	0.54	0.00	0.00	0.63
<b>Glazing B</b>	0.54	0.00	0.00	0.71
<b>Glazing C</b>	0.47	0.00	0.00	0.79
<b>Glazing D</b>	0.28	0.00	0.00	0.88

G = Total solar energy transmittance / Te = Direct solar transmittance / Qi = Secondary heat transfer factor / SC = Shading coefficient

**Visual comfort**

<b>Normal solar transmittance</b>	Class 4	Very good effect
<b>Glare control</b>	Class 3	Good effect
<b>Privacy night</b>	Class 2	Moderate effect
<b>Visual contact with the outside</b>	Class 2	Moderate effect
<b>Daylight utilisation</b>	Class 1	Little effect

**Back - Interior**

Zilario 3% - plum slate (087087)

**Visual properties**

<b>Tv = Visual light transmittance</b>	2.90%
<b>Tuv = UV transmittance</b>	2.90%

**Solar energetic properties**

<b>As = Solar absorptance</b>	36.40%
<b>Rs = Solar reflectance</b>	57.70%
<b>Ts = Solar transmittance</b>	5.90%

**Fabric + glazing: G-factor**

	<b>G</b>	<b>Te</b>	<b>Qi</b>	<b>SC</b>
<b>Glazing A</b>	0.28	0.00	0.00	0.33
<b>Glazing B</b>	0.34	0.00	0.00	0.45
<b>Glazing C</b>	0.34	0.00	0.00	0.58
<b>Glazing D</b>	0.19	0.00	0.00	0.59

G = Total solar energy transmittance / Te = Direct solar transmittance / Qi = Secondary heat transfer factor / SC = Shading coefficient

**Visual comfort**

<b>Normal solar transmittance</b>	Class 4	Very good effect
<b>Glare control</b>	Class 3	Good effect
<b>Privacy night</b>	Class 2	Moderate effect
<b>Visual contact with the outside</b>	Class 2	Moderate effect
<b>Daylight utilisation</b>	Class 1	Little effect