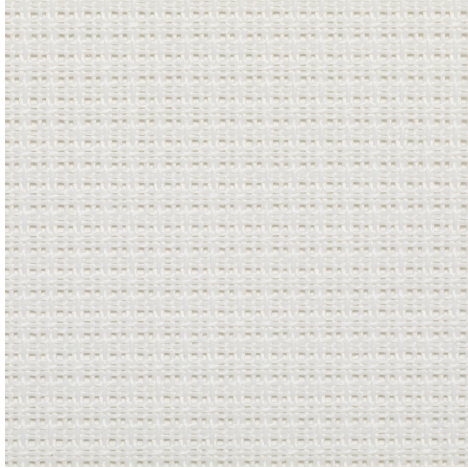
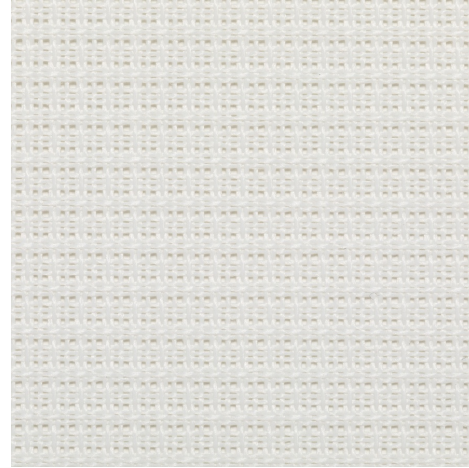


**Ulterio 8% - white (002002)**

## Technical info

**FRONT**

**BACK**


<b>Widths</b>		250 cm
<b>Composition</b>		100% Recycled PET bottles
<b>Openness factor</b>	NBN EN 410	8.00%
<b>Weight</b>	NF EN 12127	186.00 g/m <sup>2</sup>
<b>Thickness</b>	ISO 5084	0.57 mm
<b>Roll length</b>		30 m
<b>Cleaning</b>		With soapy water
<b>Confection</b>		By heat, high frequency or ultrasonic welding
<b>Fire classification</b>		
└ Europe	UNE-EN 13501-1:2007	C-s3, d0
└ France	NF P92-503	M1
└ Italy	UNI 9177	Class 1
└ Germany	DIN 4102	B1
└ UK	BS 5867	C
└ USA	NFPA 701	FR

**Front - Interior**

Ulterio 8% - white (002002)

**Visual properties**

<b>Tv = Visual light transmittance</b>	36.00%
<b>Tuv = UV transmittance</b>	36.20%

**Solar energetic properties**

<b>As = Solar absorptance</b>	5.10%
<b>Rs = Solar reflectance</b>	57.60%
<b>Ts = Solar transmittance</b>	37.30%

**Fabric + glazing: G-factor**

	<b>G</b>	<b>Te</b>	<b>Qi</b>	<b>SC</b>
<b>Glazing A</b>	0.43	0.33	0.10	0.50
<b>Glazing B</b>	0.42	0.28	0.14	0.56
<b>Glazing C</b>	0.39	0.22	0.17	0.66
<b>Glazing D</b>	0.26	0.13	0.13	0.81

G = Total solar energy transmittance / Te = Direct solar transmittance / Qi = Secondary heat transfer factor / SC = Shading coefficient

**Visual comfort**

<b>Normal solar transmittance</b>	Class 3	Good effect
<b>Glare control</b>	Class 0	Very little effect
<b>Privacy night</b>	Class 1	Little effect
<b>Visual contact with the outside</b>	Class 1	Little effect
<b>Daylight utilisation</b>	Class 3	Good effect

**Thermal comfort G-factor = Total solar energy transmittance**

<b>Glazing A</b>	<b>Glazing B</b>	<b>Glazing C</b>	<b>Glazing D</b>
Class 1	Class 1	Class 1	Class 2

**Thermal comfort Qi-factor = Secondary heat transfer factor**

<b>Glazing A</b>	<b>Glazing B</b>	<b>Glazing C</b>	<b>Glazing D</b>
Class 2	Class 2	Class 2	Class 2

Class 0 = Very little effect / 1 = Little effect / 2 = Moderate effect / 3 = Good effect / 4 = Very good effect

**Back - Interior**

Ulterio 8% - white (002002)

**Visual properties**

<b>Tv = Visual light transmittance</b>	36.00%
<b>Tuv = UV transmittance</b>	36.20%

**Solar energetic properties**

<b>As = Solar absorptance</b>	5.10%
<b>Rs = Solar reflectance</b>	57.60%
<b>Ts = Solar transmittance</b>	37.30%

**Fabric + glazing: G-factor**

	<b>G</b>	<b>Te</b>	<b>Qi</b>	<b>SC</b>
<b>Glazing A</b>	0.43	0.33	0.10	0.50
<b>Glazing B</b>	0.42	0.28	0.14	0.56
<b>Glazing C</b>	0.39	0.22	0.17	0.66
<b>Glazing D</b>	0.26	0.13	0.13	0.81

G = Total solar energy transmittance / Te = Direct solar transmittance / Qi = Secondary heat transfer factor / SC = Shading coefficient

**Visual comfort**

<b>Normal solar transmittance</b>	Class 3	Good effect
<b>Glare control</b>	Class 0	Very little effect
<b>Privacy night</b>	Class 1	Little effect
<b>Visual contact with the outside</b>	Class 1	Little effect
<b>Daylight utilisation</b>	Class 3	Good effect

**Thermal comfort G-factor = Total solar energy transmittance**

<b>Glazing A</b>	<b>Glazing B</b>	<b>Glazing C</b>	<b>Glazing D</b>
Class 1	Class 1	Class 1	Class 2

**Thermal comfort Qi-factor = Secondary heat transfer factor**

<b>Glazing A</b>	<b>Glazing B</b>	<b>Glazing C</b>	<b>Glazing D</b>
Class 2	Class 2	Class 2	Class 2

Class 0 = Very little effect / 1 = Little effect / 2 = Moderate effect / 3 = Good effect / 4 = Very good effect