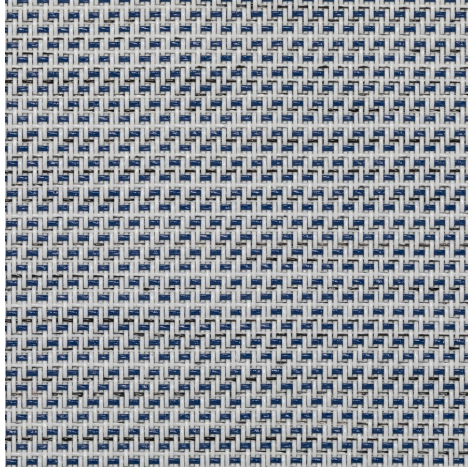
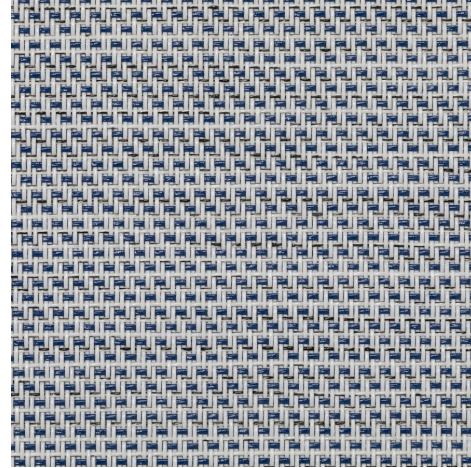


Denim 430 - Wide Wave (002208)
Technical info
FRONT

BACK


| | | |
|---|---------------------|---|
| Widths | | 250 cm |
| Composition | | Fibra de vitrio 36% - PVC 64% |
| Openness factor | NBN EN 410 | 3.00% |
| Weight | NF EN 12127 | 435.00 g/m ² |
| Thickness | ISO 5084 | 0.45 mm |
| Density | ISO 7211/2 | WARP 22.00 yarn/cm WEFT 20.00 yarn/cm |
| Color fastness to artificial light | ISO 105 B02 | >7 |
| Roll length | | 30 m |
| Cleaning | | Con acqua saponata |
| Confection | | By heat, high frequency or ultrasonic welding |
| Fire classification | | |
| └ Europe | UNE-EN 13501-1:2007 | C-s3, d0 |
| └ France | NF P92-503 | M1 |
| └ Italy | UNI 9177 | Class 1 |
| └ Germany | DIN 4102 | B1 |
| └ UK | BS 5867 | C |
| └ USA | NFPA 701 | FR |

| Denim 430 - Wide Wave (002208) | | Technical info | |
|--|----------------------|---------------------|---------------------|
| Tear strength | ISO 4674-1 methode 2 | | |
| ↳ Original | | WARP 3.30 daN | WEFT 3.65 daN |
| ↳ After climatic chamber -30°C | | WARP 3.00 daN | WEFT 3.80 daN |
| ↳ After climatic chamber +70°C | | WARP 3.10 daN | WEFT 3.60 daN |
| Elongation up to break | ISO 1421 | | |
| ↳ Original | | WARP 8.80 % | WEFT 2.80 % |
| ↳ After color fastness to artificial light | | WARP 8.70 % | WEFT 2.70 % |
| ↳ After climatic chamber -30°C | | WARP 8.60 % | WEFT 1.80 % |
| ↳ After climatic chamber +70°C | | WARP 8.90 % | WEFT 1.90 % |
| Breaking strength | ISO 1421 | | |
| ↳ Original | | WARP 125.00 daN/5cm | WEFT 175.00 daN/5cm |
| ↳ After color fastness to artificial light | | WARP 120.00 daN/5cm | WEFT 185.00 daN/5cm |
| ↳ After climatic chamber -30°C | | WARP 120.00 daN/5cm | WEFT 140.00 daN/5cm |
| ↳ After climatic chamber +70°C | | WARP 130.00 daN/5cm | WEFT 125.00 daN/5cm |

| | |
|-------------------------|---------------------------------------|
| Front - Interior | Denim 430 - Wide Wave (002208) |
|-------------------------|---------------------------------------|

| | |
|--|--------|
| Visual properties | |
| Tv = Visual light transmittance | 13.10% |
| Tuv = UV transmittance | 7.10% |

| | |
|-----------------------------------|--------|
| Solar energetic properties | |
| As = Solar absorptance | 46.50% |
| Rs = Solar reflectance | 39.30% |
| Ts = Solar transmittance | 14.20% |

| | | | | |
|-----------------------------------|----------|-----------|-----------|-----------|
| Fabric + glazing: G-factor | | | | |
| | G | Te | Qi | SC |
| Glazing A | 0.50 | 0.12 | 0.38 | 0.59 |
| Glazing B | 0.50 | 0.10 | 0.40 | 0.66 |
| Glazing C | 0.44 | 0.08 | 0.36 | 0.75 |
| Glazing D | 0.27 | 0.05 | 0.23 | 0.86 |

G = Total solar energy transmittance / Te = Direct solar transmittance / Qi = Secondary heat transfer factor / SC = Shading coefficient

| | | |
|--|---------|--------------------|
| Visual comfort | | |
| Normal solar transmittance | Class 3 | Good effect |
| Glare control | Class 0 | Very little effect |
| Privacy night | Class 1 | Little effect |
| Visual contact with the outside | Class 3 | Good effect |
| Daylight utilisation | Class 2 | Moderate effect |

| | | | |
|--|------------------|------------------|------------------|
| Thermal comfort G-factor = Total solar energy transmittance | | | |
| Glazing A | Glazing B | Glazing C | Glazing D |
| Class 1 | Class 1 | Class 1 | Class 2 |

| | | | |
|---|------------------|------------------|------------------|
| Thermal comfort Qi-factor = Secondary heat transfer factor | | | |
| Glazing A | Glazing B | Glazing C | Glazing D |
| Class 0 | Class 0 | Class 0 | Class 1 |

Class 0 = Very little effect / 1 = Little effect / 2 = Moderate effect / 3 = Good effect / 4 = Very good effect

Back - Interior

Denim 430 - Wide Wave (002208)

Visual properties

| | |
|--|--------|
| Tv = Visual light transmittance | 13.10% |
| Tuv = UV transmittance | 7.10% |

Solar energetic properties

| | |
|---------------------------------|--------|
| As = Solar absorptance | 47.30% |
| Rs = Solar reflectance | 38.50% |
| Ts = Solar transmittance | 14.20% |

Fabric + glazing: G-factor

| | G | Te | Qi | SC |
|------------------|----------|-----------|-----------|-----------|
| Glazing A | 0.50 | 0.12 | 0.38 | 0.59 |
| Glazing B | 0.50 | 0.10 | 0.40 | 0.66 |
| Glazing C | 0.44 | 0.08 | 0.36 | 0.75 |
| Glazing D | 0.27 | 0.05 | 0.23 | 0.86 |

G = Total solar energy transmittance / Te = Direct solar transmittance / Qi = Secondary heat transfer factor / SC = Shading coefficient

Visual comfort

| | | |
|--|---------|--------------------|
| Normal solar transmittance | Class 3 | Good effect |
| Glare control | Class 0 | Very little effect |
| Privacy night | Class 1 | Little effect |
| Visual contact with the outside | Class 3 | Good effect |
| Daylight utilisation | Class 2 | Moderate effect |

Thermal comfort G-factor = Total solar energy transmittance

| Glazing A | Glazing B | Glazing C | Glazing D |
|------------------|------------------|------------------|------------------|
| Class 1 | Class 1 | Class 1 | Class 2 |

Thermal comfort Qi-factor = Secondary heat transfer factor

| Glazing A | Glazing B | Glazing C | Glazing D |
|------------------|------------------|------------------|------------------|
| Class 0 | Class 0 | Class 0 | Class 1 |

Class 0 = Very little effect / 1 = Little effect / 2 = Moderate effect / 3 = Good effect / 4 = Very good effect