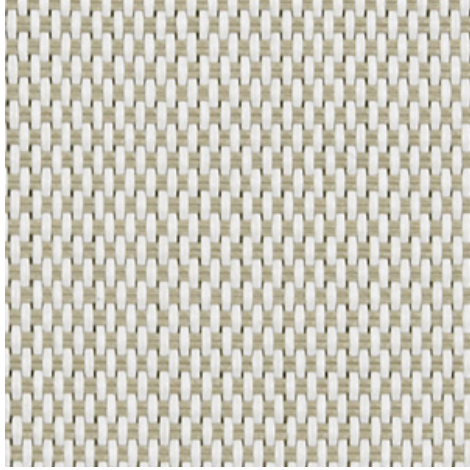


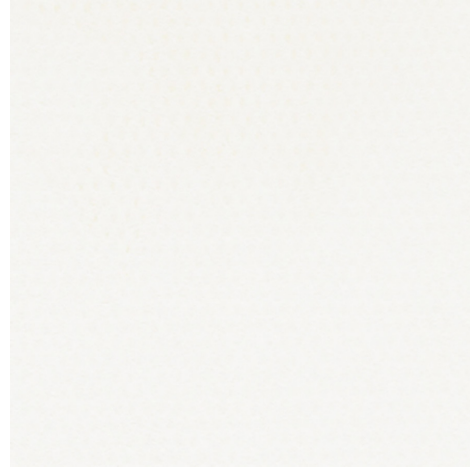
Déco N203 - white | wet sand (002032)

Technical info

FRONT



BACK



| | | |
|---|---------------------|---|
| Widths | | 250 cm |
| Composition | | Fibreglass 36% - PVC 64% |
| Openness factor | NBN EN 410 | 3.00% |
| Weight | NF EN 12127 | 435.00 g/m ² |
| Thickness | ISO 5084 | 0.45 mm |
| Density | ISO 7211/2 | WARP 22.00 yarn/cm WEFT 20.00 yarn/cm |
| Color fastness to artificial light | ISO 105 B02 | >7 |
| Roll length | | 30 m |
| Cleaning | | With soapy water |
| Confection | | By heat, high frequency or ultrasonic welding |
| Fire classification | | |
| └ Europe | UNE-EN 13501-1:2007 | C-s3,d0 |
| └ France | NF P92-503 | M2 |
| └ Italy | UNI 9177 | Class 1 |
| └ Germany | DIN 4102 | B2 |
| └ UK | BS 5867 | C |
| └ USA | NFPA 701 | FR |
| └ Spain | UNE 13773 | Clase 1 |

Déco N203 - white | wet sand (002032)
Technical info

| | | | |
|--|----------------------|---------------------|---------------------|
| Tear strength | ISO 4674-1 methode 2 | | |
| ↳ Original | | WARP 3.30 daN | WEFT 3.65 daN |
| ↳ After climatic chamber -30°C | | WARP 3.00 daN | WEFT 3.80 daN |
| ↳ After climatic chamber +70°C | | WARP 3.10 daN | WEFT 3.60 daN |
| Elongation up to break | ISO 1421 | | |
| ↳ Original | | WARP 8.80 % | WEFT 2.80 % |
| ↳ After color fastness to artificial light | | WARP 8.70 % | WEFT 2.70 % |
| ↳ After climatic chamber -30°C | | WARP 8.60 % | WEFT 1.80 % |
| ↳ After climatic chamber +70°C | | WARP 8.90 % | WEFT 1.90 % |
| Breaking strength | ISO 1421 | | |
| ↳ Original | | WARP 125.00 daN/5cm | WEFT 175.00 daN/5cm |
| ↳ After color fastness to artificial light | | WARP 120.00 daN/5cm | WEFT 185.00 daN/5cm |
| ↳ After climatic chamber -30°C | | WARP 120.00 daN/5cm | WEFT 140.00 daN/5cm |
| ↳ After climatic chamber +70°C | | WARP 130.00 daN/5cm | WEFT 125.00 daN/5cm |

Front - Interior

Déco N203 - white | wet sand (002032)

Visual properties

| | |
|--|--------|
| Tv = Visual light transmittance | 11.50% |
| Tuv = UV transmittance | 5.60% |

Solar energetic properties

| | |
|---------------------------------|--------|
| As = Solar absorptance | 39.70% |
| Rs = Solar reflectance | 46.00% |
| Ts = Solar transmittance | 14.30% |

Fabric + glazing: G-factor

| | G | Te | Qi | SC |
|------------------|----------|-----------|-----------|-----------|
| Glazing A | 0.44 | 0.12 | 0.31 | 0.51 |
| Glazing B | 0.45 | 0.11 | 0.35 | 0.60 |
| Glazing C | 0.42 | 0.08 | 0.34 | 0.70 |
| Glazing D | 0.27 | 0.05 | 0.22 | 0.83 |

G = Total solar energy transmittance / Te = Direct solar transmittance / Qi = Secondary heat transfer factor / SC = Shading coefficient

Back - Interior

Déco N203 - white | wet sand (002032)

Visual properties

| | |
|--|--------|
| Tv = Visual light transmittance | 11.50% |
| Tuv = UV transmittance | 5.60% |

Solar energetic properties

| | |
|---------------------------------|--------|
| As = Solar absorptance | 39.70% |
| Rs = Solar reflectance | 46.00% |
| Ts = Solar transmittance | 14.30% |

Fabric + glazing: G-factor

| | G | Te | Qi | SC |
|------------------|----------|-----------|-----------|-----------|
| Glazing A | 0.44 | 0.12 | 0.31 | 0.51 |
| Glazing B | 0.45 | 0.11 | 0.35 | 0.60 |
| Glazing C | 0.42 | 0.08 | 0.34 | 0.70 |
| Glazing D | 0.27 | 0.05 | 0.22 | 0.83 |

G = Total solar energy transmittance / Te = Direct solar transmittance / Qi = Secondary heat transfer factor / SC = Shading coefficient