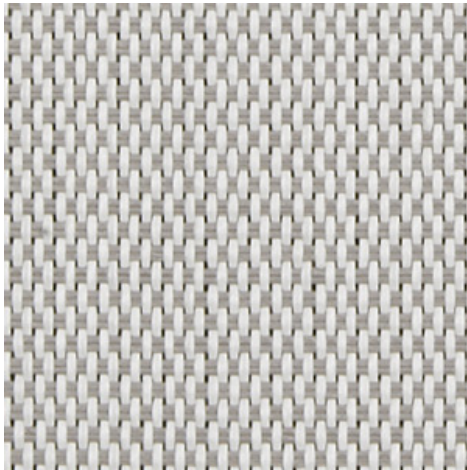


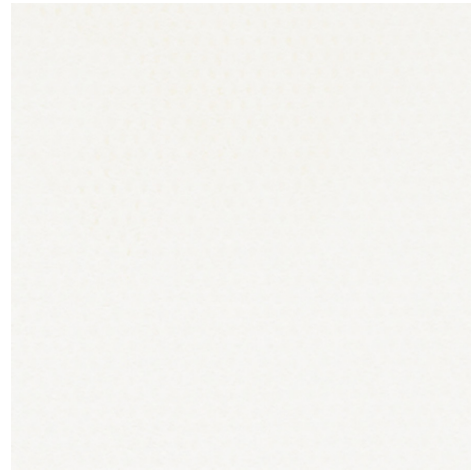
Déco N203 - white | plum blossom
(002034)

Technical info

FRONT



BACK



Widths		250 cm
Composition		Fibreglass 36% - PVC 64%
Openness factor	NBN EN 410	3.00%
Weight	NF EN 12127	435.00 g/m ²
Thickness	ISO 5084	0.45 mm
Density	ISO 7211/2	WARP 22.00 yarn/cm WEFT 20.00 yarn/cm
Color fastness to artificial light	ISO 105 B02	>7
Roll length		30 m
Cleaning		With soapy water
Confection		By heat, high frequency or ultrasonic welding
Fire classification		
└ Europe	UNE-EN 13501-1:2007	C-s3,d0
└ France	NF P92-503	M2
└ Italy	UNI 9177	Class 1
└ Germany	DIN 4102	B2
└ UK	BS 5867	C
└ USA	NFPA 701	FR
└ Spain	UNE 13773	Clase 1

Déco N203 - white | plum blossom
(002034)

Technical info

Tear strength		ISO 4674-1 methode 2	
↳ Original	WARP	3.30 daN	WEFT 3.65 daN
↳ After climatic chamber -30°C	WARP	3.00 daN	WEFT 3.80 daN
↳ After climatic chamber +70°C	WARP	3.10 daN	WEFT 3.60 daN
Elongation up to break		ISO 1421	
↳ Original	WARP	8.80 %	WEFT 2.80 %
↳ After color fastness to artificial light	WARP	8.70 %	WEFT 2.70 %
↳ After climatic chamber -30°C	WARP	8.60 %	WEFT 1.80 %
↳ After climatic chamber +70°C	WARP	8.90 %	WEFT 1.90 %
Breaking strength		ISO 1421	
↳ Original	WARP	125.00 daN/5cm	WEFT 175.00 daN/5cm
↳ After color fastness to artificial light	WARP	120.00 daN/5cm	WEFT 185.00 daN/5cm
↳ After climatic chamber -30°C	WARP	120.00 daN/5cm	WEFT 140.00 daN/5cm
↳ After climatic chamber +70°C	WARP	130.00 daN/5cm	WEFT 125.00 daN/5cm

Front - Interior

Déco N203 - white | plum blossom (002034)

Visual properties

Tv = Visual light transmittance	11.00%
Tuv = UV transmittance	5.00%

Solar energetic properties

As = Solar absorptance	40.70%
Rs = Solar reflectance	45.80%
Ts = Solar transmittance	13.50%

Fabric + glazing: G-factor

	G	Te	Qi	SC
Glazing A	0.43	0.12	0.32	0.51
Glazing B	0.45	0.10	0.35	0.60
Glazing C	0.42	0.08	0.34	0.70
Glazing D	0.27	0.04	0.22	0.83

G = Total solar energy transmittance / Te = Direct solar transmittance / Qi = Secondary heat transfer factor / SC = Shading coefficient

Back - Interior

Déco N203 - white | plum blossom (002034)

Visual properties

Tv = Visual light transmittance	11.00%
Tuv = UV transmittance	5.50%

Solar energetic properties

As = Solar absorptance	40.70%
Rs = Solar reflectance	45.80%
Ts = Solar transmittance	13.50%

Fabric + glazing: G-factor

	G	Te	Qi	SC
Glazing A	0.43	0.12	0.32	0.51
Glazing B	0.45	0.10	0.35	0.60
Glazing C	0.42	0.08	0.34	0.70
Glazing D	0.27	0.04	0.22	0.83

G = Total solar energy transmittance / Te = Direct solar transmittance / Qi = Secondary heat transfer factor / SC = Shading coefficient