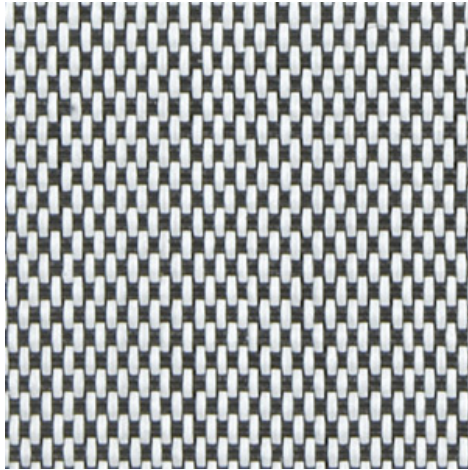


**Déco N203 - weiß | schwarz (002010)**

Technical info

**FRONT**



**BACK**



<b>Widths</b>		250 cm
<b>Composition</b>		Glasfaser 36% - PVC 64%
<b>Openness factor</b>	NBN EN 410	3.00%
<b>Weight</b>	NF EN 12127	435.00 g/m <sup>2</sup>
<b>Thickness</b>	ISO 5084	0.45 mm
<b>Density</b>	ISO 7211/2	WARP 22.00 yarn/cm      WEFT 20.00 yarn/cm
<b>Color fastness to artificial light</b>	ISO 105 B02	>7
<b>Roll length</b>		30 m
<b>Cleaning</b>		Mit Seifenwasser
<b>Confection</b>		By heat, high frequency or ultrasonic welding
<b>Fire classification</b>		
└ Europe	UNE-EN 13501-1:2007	C-s3,d0
└ France	NF P92-503	M2
└ Italy	UNI 9177	Class 1
└ Germany	DIN 4102	B2
└ UK	BS 5867	C
└ USA	NFPA 701	FR
└ Spain	UNE 13773	Clase 1

**Déco N203 - weiß | schwarz (002010)**
**Technical info**

<b>Tear strength</b>	ISO 4674-1 methode 2		
↳ Original		WARP 3.30 daN	WEFT 3.65 daN
↳ After climatic chamber -30°C		WARP 3.00 daN	WEFT 3.80 daN
↳ After climatic chamber +70°C		WARP 3.10 daN	WEFT 3.60 daN
<b>Elongation up to break</b>	ISO 1421		
↳ Original		WARP 8.80 %	WEFT 2.80 %
↳ After color fastness to artificial light		WARP 8.70 %	WEFT 2.70 %
↳ After climatic chamber -30°C		WARP 8.60 %	WEFT 1.80 %
↳ After climatic chamber +70°C		WARP 8.90 %	WEFT 1.90 %
<b>Breaking strength</b>	ISO 1421		
↳ Original		WARP 125.00 daN/5cm	WEFT 175.00 daN/5cm
↳ After color fastness to artificial light		WARP 120.00 daN/5cm	WEFT 185.00 daN/5cm
↳ After climatic chamber -30°C		WARP 120.00 daN/5cm	WEFT 140.00 daN/5cm
↳ After climatic chamber +70°C		WARP 130.00 daN/5cm	WEFT 125.00 daN/5cm

**Front - Interior**

Déco N203 - weiß | schwarz (002010)

**Visual properties**

<b>Tv = Visual light transmittance</b>	7.80%
<b>Tuv = UV transmittance</b>	4.60%

**Solar energetic properties**

<b>As = Solar absorptance</b>	59.20%
<b>Rs = Solar reflectance</b>	32.50%
<b>Ts = Solar transmittance</b>	8.30%

**Fabric + glazing: G-factor**

	<b>G</b>	<b>Te</b>	<b>Qi</b>	<b>SC</b>
<b>Glazing A</b>	0.49	0.07	0.42	0.58
<b>Glazing B</b>	0.51	0.06	0.45	0.67
<b>Glazing C</b>	0.46	0.04	0.41	0.77
<b>Glazing D</b>	0.28	0.03	0.25	0.86

G = Total solar energy transmittance / Te = Direct solar transmittance / Qi = Secondary heat transfer factor / SC = Shading coefficient

**Back - Interior**

Déco N203 - weiß | schwarz (002010)

**Visual properties**

<b>Tv = Visual light transmittance</b>	7.80%
<b>Tuv = UV transmittance</b>	4.60%

**Solar energetic properties**

<b>As = Solar absorptance</b>	59.20%
<b>Rs = Solar reflectance</b>	32.50%
<b>Ts = Solar transmittance</b>	8.30%

**Fabric + glazing: G-factor**

	<b>G</b>	<b>Te</b>	<b>Qi</b>	<b>SC</b>
<b>Glazing A</b>	0.49	0.07	0.42	0.58
<b>Glazing B</b>	0.51	0.06	0.45	0.67
<b>Glazing C</b>	0.46	0.04	0.41	0.77
<b>Glazing D</b>	0.28	0.03	0.25	0.86

G = Total solar energy transmittance / Te = Direct solar transmittance / Qi = Secondary heat transfer factor / SC = Shading coefficient