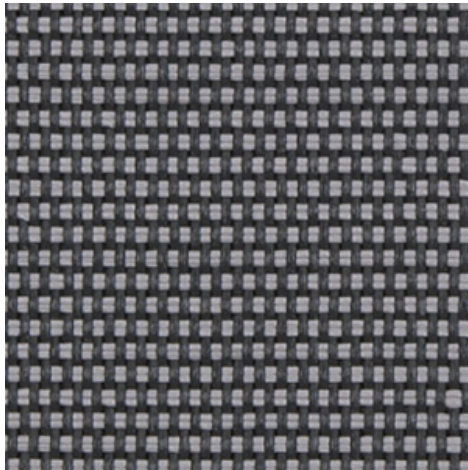


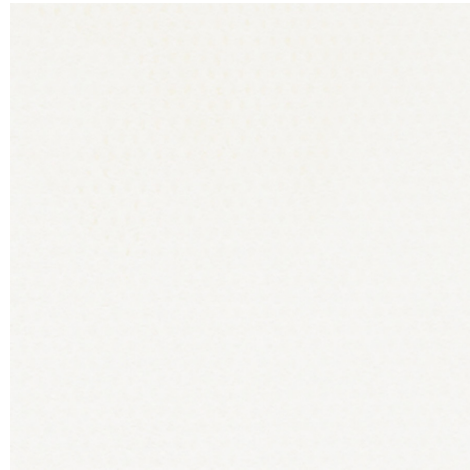
Déco N203 - antracita | plum blossom
(010034)

Technical info

FRONT



BACK



Widths		250 cm
Composition		Fibra de vitrio 36% - PVC 64%
Openness factor	NBN EN 410	3.00%
Weight	NF EN 12127	435.00 g/m ²
Thickness	ISO 5084	0.45 mm
Density	ISO 7211/2	WARP 22.00 yarn/cm WEFT 20.00 yarn/cm
Color fastness to artificial light	ISO 105 B02	>7
Roll length		30 m
Cleaning		Con acqua saponata
Confection		By heat, high frequency or ultrasonic welding
Fire classification		
└ Europe	UNE-EN 13501-1:2007	C-s3, d0
└ France	NF P92-503	M1
└ Italy	UNI 9177	Class 1
└ Germany	DIN 4102	B1
└ UK	BS 5867	C
└ USA	NFPA 701	FR

Déco N203 - antracita | plum blossom
(010034)

Technical info

Tear strength	ISO 4674-1 methode 2		
↳ Original		WARP 3.30 daN	WEFT 3.65 daN
↳ After climatic chamber -30°C		WARP 3.00 daN	WEFT 3.80 daN
↳ After climatic chamber +70°C		WARP 3.10 daN	WEFT 3.60 daN
Elongation up to break	ISO 1421		
↳ Original		WARP 8.80 %	WEFT 2.80 %
↳ After color fastness to artificial light		WARP 8.70 %	WEFT 2.70 %
↳ After climatic chamber -30°C		WARP 8.60 %	WEFT 1.80 %
↳ After climatic chamber +70°C		WARP 8.90 %	WEFT 1.90 %
Breaking strength	ISO 1421		
↳ Original		WARP 125.00 daN/5cm	WEFT 175.00 daN/5cm
↳ After color fastness to artificial light		WARP 120.00 daN/5cm	WEFT 185.00 daN/5cm
↳ After climatic chamber -30°C		WARP 120.00 daN/5cm	WEFT 140.00 daN/5cm
↳ After climatic chamber +70°C		WARP 130.00 daN/5cm	WEFT 125.00 daN/5cm

Front - Interior

Déco N203 - antracita | plum blossom (010034)

Visual properties

Tv = Visual light transmittance	6.10%
Tuv = UV transmittance	5.90%

Solar energetic properties

As = Solar absorptance	80.80%
Rs = Solar reflectance	12.80%
Ts = Solar transmittance	6.40%

Fabric + glazing: G-factor

	G	Te	Qi	SC
Glazing A	0.59	0.05	0.54	0.69
Glazing B	0.60	0.04	0.56	0.79
Glazing C	0.52	0.03	0.48	0.87
Glazing D	0.29	0.02	0.27	0.91

G = Total solar energy transmittance / Te = Direct solar transmittance / Qi = Secondary heat transfer factor / SC = Shading coefficient

Back - Interior

Déco N203 - antracita | plum blossom (010034)

Visual properties

Tv = Visual light transmittance	6.10%
Tuv = UV transmittance	5.90%

Solar energetic properties

As = Solar absorptance	80.80%
Rs = Solar reflectance	12.80%
Ts = Solar transmittance	6.40%

Fabric + glazing: G-factor

	G	Te	Qi	SC
Glazing A	0.59	0.05	0.54	0.69
Glazing B	0.60	0.04	0.56	0.79
Glazing C	0.52	0.03	0.48	0.87
Glazing D	0.29	0.02	0.27	0.91

G = Total solar energy transmittance / Te = Direct solar transmittance / Qi = Secondary heat transfer factor / SC = Shading coefficient