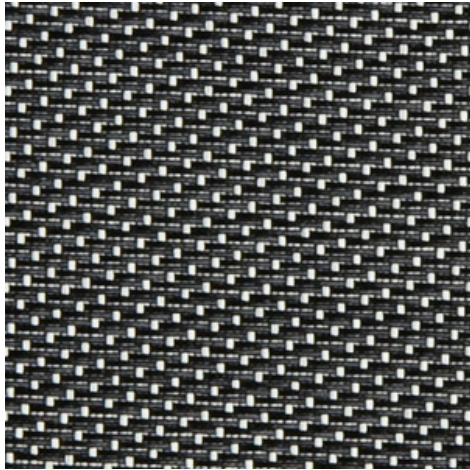
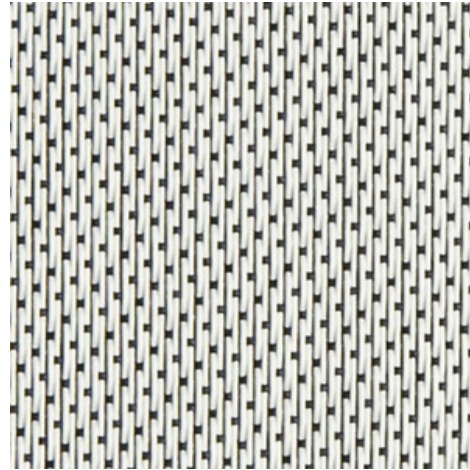


Verso 3 - white | charcoal (002010)
Technical info
FRONT

BACK


Widths		160 cm 250 cm 320 cm
Composition		Fibreglass 36% - PVC 64%
Openness factor	NBN EN 410	3.00%
Weight	NF EN 12127	470.00 g/m ²
Thickness	ISO 5084	0.55 mm
Density	ISO 7211/2	WARP 24.00 yarn/cm WEFT 23.00 yarn/cm
Color fastness to artificial light	ISO 105 B02	>7
Roll length		30 m
Cleaning		With soapy water
Confection		By heat, high frequency or ultrasonic welding
Fire classification		
└ Europe	UNE-EN 13501-1:2007	B-s2,d0
└ Germany	DIN 4102	B2

Verso 3 - white charcoal (002010)		Technical info	
Tear strength	ISO 4674-1 methode 2		
↳ Original		WARP 5.90 daN	WEFT 4.60 daN
↳ After climatic chamber -30°C		WARP 6.30 daN	WEFT 5.50 daN
↳ After climatic chamber +70°C		WARP 6.00 daN	WEFT 4.70 daN
Elongation up to break	ISO 1421		
↳ Original		WARP 2.70 %	WEFT 3.60 %
↳ After color fastness to artificial light		WARP 2.90 %	WEFT 3.30 %
↳ After climatic chamber -30°C		WARP 2.75 %	WEFT 2.40 %
↳ After climatic chamber +70°C		WARP 2.30 %	WEFT 2.35 %
Breaking strength	ISO 1421		
↳ Original		WARP 155.00 daN/5cm	WEFT 180.00 daN/5cm
↳ After color fastness to artificial light		WARP 160.00 daN/5cm	WEFT 170.00 daN/5cm
↳ After climatic chamber -30°C		WARP 150.00 daN/5cm	WEFT 110.00 daN/5cm
↳ After climatic chamber +70°C		WARP 100.00 daN/5cm	WEFT 100.00 daN/5cm

Front - Interior

Verso 3 - white | charcoal (002010)

Visual properties

Tv = Visual light transmittance	6.20%
Tuv = UV transmittance	3.20%

Solar energetic properties

As = Solar absorptance	81.60%
Rs = Solar reflectance	12.00%
Ts = Solar transmittance	6.30%

Fabric + glazing: G-factor

	G	Te	Qi	SC
Glazing A	0.65	0.05	0.60	0.77
Glazing B	0.64	0.04	0.59	0.84
Glazing C	0.53	0.03	0.50	0.90
Glazing D	0.30	0.02	0.28	0.93

G = Total solar energy transmittance / Te = Direct solar transmittance / Qi = Secondary heat transfer factor / SC = Shading coefficient

Visual comfort

Normal solar transmittance	Class 4	Very good effect
Glare control	Class 2	Moderate effect
Privacy night	Class 2	Moderate effect
Visual contact with the outside	Class 2	Moderate effect
Daylight utilisation	Class 1	Little effect

Thermal comfort G-factor = Total solar energy transmittance

Glazing A	Glazing B	Glazing C	Glazing D
Class 0	Class 0	Class 0	Class 2

Thermal comfort Qi-factor = Secondary heat transfer factor

Glazing A	Glazing B	Glazing C	Glazing D
Class 0	Class 0	Class 0	Class 1

Class 0 = Very little effect / 1 = Little effect / 2 = Moderate effect / 3 = Good effect / 4 = Very good effect

Back - Interior

Verso 3 - white | charcoal (002010)

Visual properties

Tv = Visual light transmittance	6.20%
Tuv = UV transmittance	3.20%

Solar energetic properties

As = Solar absorptance	48.40%
Rs = Solar reflectance	45.20%
Ts = Solar transmittance	6.30%

Fabric + glazing: G-factor

	G	Te	Qi	SC
Glazing A	0.46	0.05	0.40	0.54
Glazing B	0.47	0.05	0.42	0.61
Glazing C	0.42	0.04	0.39	0.71
Glazing D	0.27	0.02	0.25	0.84

G = Total solar energy transmittance / Te = Direct solar transmittance / Qi = Secondary heat transfer factor / SC = Shading coefficient

Visual comfort

Normal solar transmittance	Class 4	Very good effect
Glare control	Class 2	Moderate effect
Privacy night	Class 2	Moderate effect
Visual contact with the outside	Class 2	Moderate effect
Daylight utilisation	Class 1	Little effect

Thermal comfort G-factor = Total solar energy transmittance

Glazing A	Glazing B	Glazing C	Glazing D
Class 1	Class 1	Class 1	Class 2

Thermal comfort Qi-factor = Secondary heat transfer factor

Glazing A	Glazing B	Glazing C	Glazing D
Class 0	Class 0	Class 0	Class 1

Class 0 = Very little effect / 1 = Little effect / 2 = Moderate effect / 3 = Good effect / 4 = Very good effect