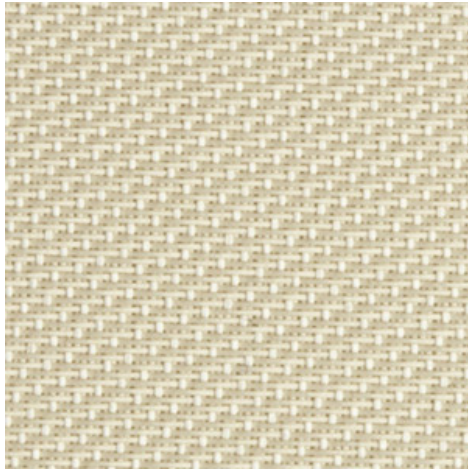


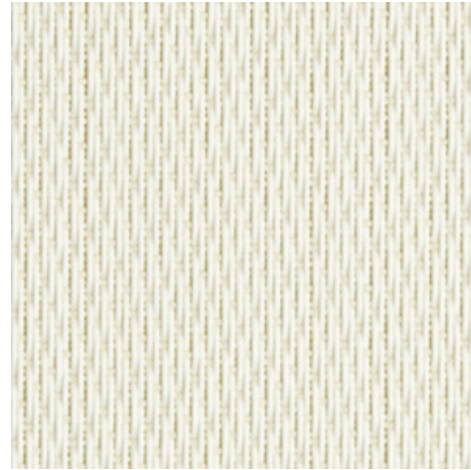
Verso 1 - white | linen (002008)

Technical info

FRONT



BACK



Widths		160 cm 250 cm 320 cm
Composition		Fibreglass 36% - PVC 64%
Openness factor	NF EN 12127	1.00%
Weight	NF EN 12127	465.00 g/m ²
Thickness	ISO 5084	0.60 mm
Density	ISO 7211/2	WARP 24.00 yarn/cm WEFT 25.00 yarn/cm
Color fastness to artificial light	ISO 105 B02	>7
Roll length		30 m
Cleaning		With soapy water
Confection		By heat, high frequency or ultrasonic welding
Fire classification		
└ Europe	UNE-EN 13501-1:2007	C-s3,d0
└ Germany	DIN 4102	B2

Verso 1 - white linen (002008)		Technical info	
Tear strength	ISO 4674-1 methode 2		
↳ Original		WARP 2.20 daN	WEFT 2.40 daN
↳ After climatic chamber -30°C		WARP 2.05 daN	WEFT 2.10 daN
↳ After climatic chamber +70°C		WARP 2.30 daN	WEFT 2.70 daN
Elongation up to break	ISO 1421		
↳ Original		WARP 2.85 %	WEFT 2.40 %
↳ After color fastness to artificial light		WARP 3.10 %	WEFT 2.90 %
↳ After climatic chamber -30°C		WARP 2.10 %	WEFT 2.60 %
↳ After climatic chamber +70°C		WARP 2.00 %	WEFT 2.70 %
Breaking strength	ISO 1421		
↳ Original		WARP 185.00 daN/5cm	WEFT 130.00 daN/5cm
↳ After color fastness to artificial light		WARP 175.00 daN/5cm	WEFT 140.00 daN/5cm
↳ After climatic chamber -30°C		WARP 115.00 daN/5cm	WEFT 120.00 daN/5cm
↳ After climatic chamber +70°C		WARP 100.00 daN/5cm	WEFT 100.00 daN/5cm

Front - Interior

Verso 1 - white | linen (002008)

Visual properties

Tv = Visual light transmittance	11.30%
Tuv = UV transmittance	1.90%

Solar energetic properties

As = Solar absorptance	32.40%
Rs = Solar reflectance	53.50%
Ts = Solar transmittance	14.10%

Fabric + glazing: G-factor

	G	Te	Qi	SC
Glazing A	0.42	0.12	0.30	0.49
Glazing B	0.43	0.11	0.32	0.56
Glazing C	0.40	0.08	0.32	0.67
Glazing D	0.26	0.05	0.21	0.82

G = Total solar energy transmittance / Te = Direct solar transmittance / Qi = Secondary heat transfer factor / SC = Shading coefficient

Visual comfort

Normal solar transmittance	Class 4	Very good effect
Glare control	Class 1	Little effect
Privacy night	Class 2	Moderate effect
Visual contact with the outside	Class 1	Little effect
Daylight utilisation	Class 1	Little effect

Thermal comfort G-factor = Total solar energy transmittance

Glazing A	Glazing B	Glazing C	Glazing D
Class 1	Class 1	Class 1	Class 2

Thermal comfort Qi-factor = Secondary heat transfer factor

Glazing A	Glazing B	Glazing C	Glazing D
Class 1	Class 0	Class 0	Class 1

Class 0 = Very little effect / 1 = Little effect / 2 = Moderate effect / 3 = Good effect / 4 = Very good effect

Back - Interior

Verso 1 - white | linen (002008)

Visual properties

Tv = Visual light transmittance	11.30%
Tuv = UV transmittance	1.90%

Solar energetic properties

As = Solar absorptance	24.20%
Rs = Solar reflectance	61.70%
Ts = Solar transmittance	14.10%

Fabric + glazing: G-factor

	G	Te	Qi	SC
Glazing A	0.37	0.12	0.25	0.44
Glazing B	0.39	0.11	0.28	0.51
Glazing C	0.37	0.08	0.29	0.63
Glazing D	0.25	0.05	0.20	0.79

G = Total solar energy transmittance / Te = Direct solar transmittance / Qi = Secondary heat transfer factor / SC = Shading coefficient

Visual comfort

Normal solar transmittance	Class 4	Very good effect
Glare control	Class 1	Little effect
Privacy night	Class 2	Moderate effect
Visual contact with the outside	Class 1	Little effect
Daylight utilisation	Class 1	Little effect

Thermal comfort G-factor = Total solar energy transmittance

Glazing A	Glazing B	Glazing C	Glazing D
Class 1	Class 1	Class 1	Class 2

Thermal comfort Qi-factor = Secondary heat transfer factor

Glazing A	Glazing B	Glazing C	Glazing D
Class 1	Class 1	Class 1	Class 1

Class 0 = Very little effect / 1 = Little effect / 2 = Moderate effect / 3 = Good effect / 4 = Very good effect