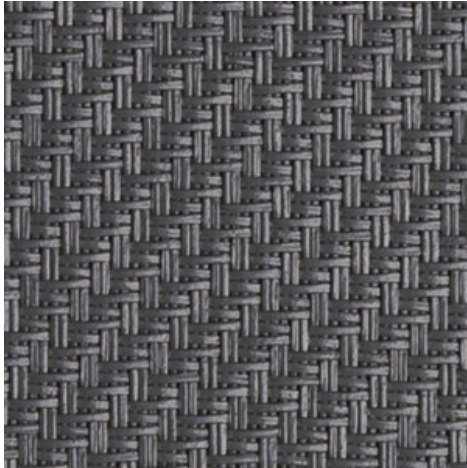


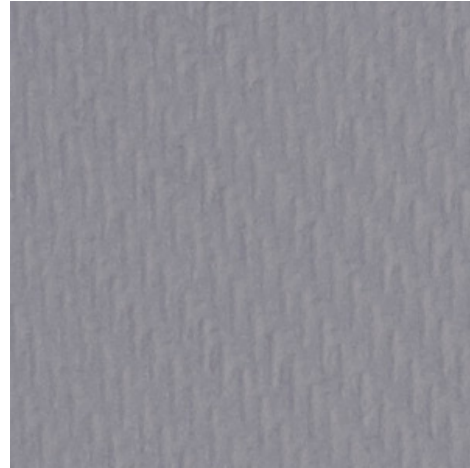
Serge 600 Blockout - gris-gris | gris
(010101)

Technical info

FRONT



BACK



Widths		155 cm
Composition		Serge 600 laminada con hoja de PVC
Openness factor	NBN EN 410	0.00%
Weight	NF EN 12127	800.00 g/m ²
Thickness	ISO 5084	0.56 mm
Density	ISO 7211/2	WARP 18.00 yarn/cm WEFT 14.00 yarn/cm
Color fastness to artificial light	ISO 105 B02	>7
Roll length		50 m
Cleaning		Con acqua saponata
Confection		By heat, high frequency or ultrasonic welding
Fire classification		
└ Europe	UNE-EN 13501-1:2007	C-s3, d0
└ France	NF P92-503	M1
└ Italy	UNI 9177	Class 1
└ Germany	DIN 4102	B1
└ UK	BS 5867	C
└ USA	NFPA 701	FR

Serge 600 Blockout - gris-gris | gris (010101)

Technical info

Tear strength	ISO 4674-1 methode 2		
↳ Original		WARP 9.70 daN	WEFT 8.90 daN
↳ After climatic chamber -30°C		WARP 9.60 daN	WEFT 9.00 daN
↳ After climatic chamber +70°C		WARP 10.20 daN	WEFT 9.20 daN
Elongation up to break	ISO 1421		
↳ Original		WARP 3.40 %	WEFT 3.50 %
↳ After color fastness to artificial light		WARP 3.60 %	WEFT 4.00 %
↳ After climatic chamber -30°C		WARP 3.60 %	WEFT 3.70 %
↳ After climatic chamber +70°C		WARP 3.90 %	WEFT 3.90 %
Breaking strength	ISO 1421		
↳ Original		WARP 310.00 daN/5cm	WEFT 230.00 daN/5cm
↳ After color fastness to artificial light		WARP 310.00 daN/5cm	WEFT 240.00 daN/5cm
↳ After climatic chamber -30°C		WARP 300.00 daN/5cm	WEFT 210.00 daN/5cm
↳ After climatic chamber +70°C		WARP 305.00 daN/5cm	WEFT 240.00 daN/5cm

Front - Interior

Serge 600 Blockout - gris-gris | gris (010101)

Visual properties

Tv = Visual light transmittance	0.00%
Tuv = UV transmittance	0.00%

Solar energetic properties

As = Solar absorptance	83.50%
Rs = Solar reflectance	16.50%
Ts = Solar transmittance	0.00%

Fabric + glazing: G-factor

	G	Te	Qi	SC
Glazing A	0.62	0.00	0.62	0.72
Glazing B	0.61	0.00	0.61	0.80
Glazing C	0.51	0.00	0.51	0.87
Glazing D	0.29	0.00	0.29	0.92

G = Total solar energy transmittance / Te = Direct solar transmittance / Qi = Secondary heat transfer factor / SC = Shading coefficient

Visual comfort

Normal solar transmittance	Class 4	Very good effect
Glare control	Class 4	Very good effect
Privacy night	Class 2	Moderate effect
Visual contact with the outside	Class 2	Moderate effect
Daylight utilisation	Class 0	Very little effect

Thermal comfort G-factor = Total solar energy transmittance

Glazing A	Glazing B	Glazing C	Glazing D
Class 0	Class 0	Class 0	Class 2

Thermal comfort Qi-factor = Secondary heat transfer factor

Glazing A	Glazing B	Glazing C	Glazing D
Class 0	Class 0	Class 0	Class 1

Class 0 = Very little effect / 1 = Little effect / 2 = Moderate effect / 3 = Good effect / 4 = Very good effect

Back - Interior

Serge 600 Blockout - gris-gris | gris (010101)

Visual properties

Tv = Visual light transmittance	0.00%
Tuv = UV transmittance	0.00%

Solar energetic properties

As = Solar absorptance	71.00%
Rs = Solar reflectance	29.00%
Ts = Solar transmittance	0.00%

Fabric + glazing: G-factor

	G	Te	Qi	SC
Glazing A	0.54	0.00	0.54	0.64
Glazing B	0.54	0.00	0.54	0.72
Glazing C	0.47	0.00	0.47	0.80
Glazing D	0.28	0.00	0.28	0.88

G = Total solar energy transmittance / Te = Direct solar transmittance / Qi = Secondary heat transfer factor / SC = Shading coefficient

Visual comfort

Normal solar transmittance	Class 4	Very good effect
Glare control	Class 4	Very good effect
Privacy night	Class 2	Moderate effect
Visual contact with the outside	Class 2	Moderate effect
Daylight utilisation	Class 0	Very little effect

Thermal comfort G-factor = Total solar energy transmittance

Glazing A	Glazing B	Glazing C	Glazing D
Class 0	Class 0	Class 1	Class 2

Thermal comfort Qi-factor = Secondary heat transfer factor

Glazing A	Glazing B	Glazing C	Glazing D
Class 0	Class 0	Class 0	Class 1

Class 0 = Very little effect / 1 = Little effect / 2 = Moderate effect / 3 = Good effect / 4 = Very good effect