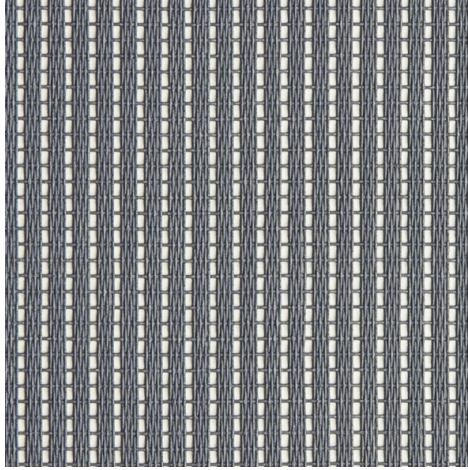
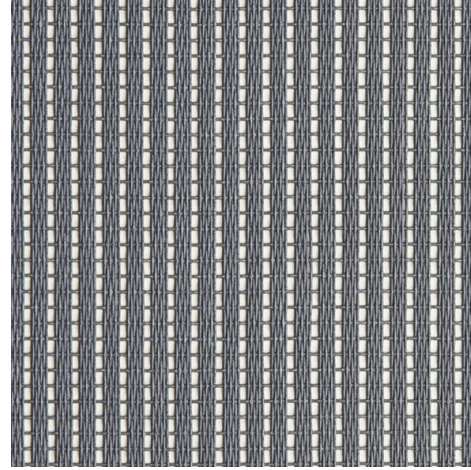


**Shadow 270 - grey | grey (001001)**

## Technical info

**FRONT**

**BACK**


<b>Widths</b>		This product is only made to order. Please contact us for more information.	
<b>Composition</b>		Fibra de vitrio 36% - PVC 64%	
<b>Openness factor</b>	NBN EN 410	20.00%	
<b>Weight</b>	NF EN 12127	285.00 g/m <sup>2</sup>	
<b>Thickness</b>	ISO 5084	0.42 mm	
<b>Density</b>	ISO 7211/2	WARP 23.00 yarn/cm	WEFT 6.00 yarn/cm
<b>Color fastness to artificial light</b>	ISO 105 B02	> 7	
<b>Roll length</b>		50 m	
<b>Cleaning</b>		Con acqua saponata	
<b>Confection</b>		By heat, high frequency or ultrasonic welding	
<b>Fire classification</b>			
└ France	NF P92-503	M1	
└ Italy	UNI 9177	Class 1	
└ Germany	DIN 4102		
└ UK	BS 5867	C	
└ USA	NFPA 701	FR	

Shadow 270 - grey   grey (001001)		Technical info	
<b>Tear strength</b>	ISO 4674-1 methode 2		
↳ Original		WARP 4.30 daN	WEFT 3.60 daN
↳ After climatic chamber +30°C		WARP 5.40 daN	WEFT 3.70 daN
↳ After climatic chamber +70°C		WARP 3.70 daN	WEFT 4.50 daN
<b>Elongation up to break</b>	ISO 1421		
↳ Original		WARP 3.20 %	WEFT 2.10 %
↳ After color fastness to artificial light		WARP 3.20 %	WEFT 1.90 %
↳ After climatic chamber +30°C		WARP 3.80 %	WEFT 1.80 %
↳ After climatic chamber +70°C		WARP 3.00 %	WEFT 1.80 %
<b>Breaking strength</b>	ISO 1421		
↳ Original		WARP 135.00 daN/5cm	WEFT 50.00 daN/5cm
↳ After color fastness to artificial light		WARP 120.00 daN/5cm	WEFT 47.00 daN/5cm
↳ After climatic chamber +30°C		WARP 130.00 daN/5cm	WEFT 140.00 daN/5cm
↳ After climatic chamber +70°C		WARP 110.00 daN/5cm	WEFT 45.00 daN/5cm

## Front - Interior

Shadow 270 - grey | grey (001001)

### Visual properties

<b>Tv = Visual light transmittance</b>	22.40%
<b>Tuv = UV transmittance</b>	21.00%

### Solar energetic properties

<b>As = Solar absorptance</b>	63.30%
<b>Rs = Solar reflectance</b>	14.00%
<b>Ts = Solar transmittance</b>	22.70%

### Fabric + glazing: G-factor

	<b>G</b>	<b>Te</b>	<b>Qi</b>	<b>SC</b>
<b>Glazing A</b>	0.66	0.00	0.00	0.00
<b>Glazing B</b>	0.64	0.00	0.00	0.00
<b>Glazing C</b>	0.53	0.00	0.00	0.00
<b>Glazing D</b>	0.30	0.00	0.00	0.00

G = Total solar energy transmittance / Te = Direct solar transmittance / Qi = Secondary heat transfer factor / SC = Shading coefficient

## Back - Interior

Shadow 270 - grey | grey (001001)

### Visual properties

<b>Tv = Visual light transmittance</b>	22.40%
<b>Tuv = UV transmittance</b>	21.00%

### Solar energetic properties

<b>As = Solar absorptance</b>	62.80%
<b>Rs = Solar reflectance</b>	14.50%
<b>Ts = Solar transmittance</b>	22.70%

### Fabric + glazing: G-factor

	<b>G</b>	<b>Te</b>	<b>Qi</b>	<b>SC</b>
<b>Glazing A</b>	0.66	0.00	0.00	0.00
<b>Glazing B</b>	0.63	0.00	0.00	0.00
<b>Glazing C</b>	0.53	0.00	0.00	0.00
<b>Glazing D</b>	0.30	0.00	0.00	0.00

G = Total solar energy transmittance / Te = Direct solar transmittance / Qi = Secondary heat transfer factor / SC = Shading coefficient